

CAD GENERATED DRAWING	DCN CONTROLLED DOCUMENT	DWG. NO.  1285-6004
-----------------------------	-------------------------------	---------------------------

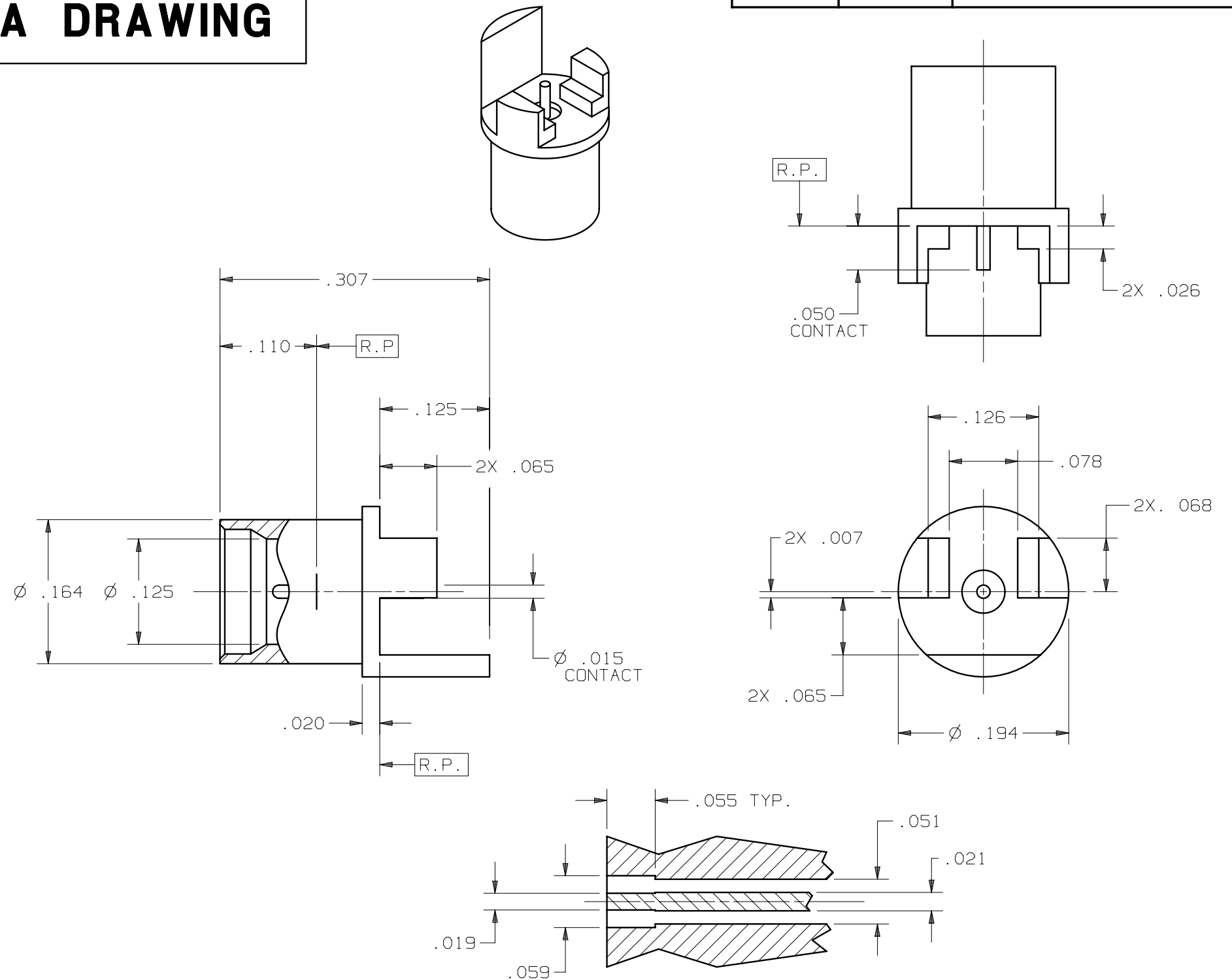
BODY:	STAINLESS STEEL PER AMS-5640
CONTACT:	BERYLLIUM COPPER PER ASTM B196
INSULATOR:	TEFLON PER ASTM D1710

BODY &  
CONTACT: GOLD PER ASTM B488 OVER NICKEL  
PER AMS-QQ-N-290

IMPEDANCE: 50 OHMS  
FREQ. RANGE: DC-18.0 GHz  
R.F. INSERTION LOSS: 0.1dB MAX TO 18.0 GHz  
VSWR: 1.15:1 MAX. TO 18.0 GHz

## SMP MALE INTERFACE DIMENSIONS PER MIL-STD-348

1. FOR RECOMMENDED FOOTPRINT TO YOUR SPECIFIC PCB, CONTACT SV MICROWAVE SALES DEPARTMENT (sales@svmicro.com, 561-840-1800).



## RECOMMENDED PCB MOUNT

SYM.	DESCRIPTION	DATE	APPR.	UNLESS OTHERWISE SPECIFIED: 1)ALL DIMENSIONS ARE AFTER PLATING. 2)BREAK CORNERS & EDGES .005 R.MAX. 3)CHAM. 1st & LAST THDS. 4)SURFACE ROUGHNESS 63 J MIL-STD-10. 5)DIAS. ON COMMON CENTERS TO BE CONCENTRIC WITHIN .005 T.I.R. 6)REMOVE ALL BURRS.	DIMENSIONS ARE IN INCHES TOLERANCES:			SV Microwave, Inc. 2400 Centrepark West Drive, Suite 100 West Palm Beach, FL 33409
-	REL.DCN 31992	08/04	BRT		DECIMALS .X N/A .XX N/A .XXX N/A	FRACTIONAL ±1/64	ANGULAR X° ±10' X°X' ±15'	
					MATERIAL:		□" AREA:	
					SEE ABOVE		N/A	
					FINISH:			
					SEE ABOVE			
				DRAWN:	BRT	08/24/04	TITLE: SMP MALE STRAIGHT PCB EDGE MOUNT (SMOOTH BORE)	
				CHECKED:	BRT	08/24/04		
				APPROVED:	BRT	08/24/04		
					SIZE B	CAGE NO. 95077	SCALE 7X	DWG.NO. 1285-6004

# Mouser Electronics

Authorized Distributor

Click to View Pricing, Inventory, Delivery & Lifecycle Information:

[Amphenol:](#)

[1285-6004](#) [1285-6004-TD](#)