

PRODUCT DATA DRAWING

CAD  
GENERATED  
DRAWING

DCN  
CONTROLLED  
DOCUMENT

DWG. NO.

1285-6003

MATERIAL :

BODY: STAINLESS STEEL PER AMS-5640  
CONTACT: BERYLLIUM COPPER PER ASTM B196  
INSULATOR: TEFLON PER ASTM D1710

FINISH :

BODY &  
CONTACT: GOLD PER ASTM B488 OVER NICKEL  
PER AMS-QQ-N-290

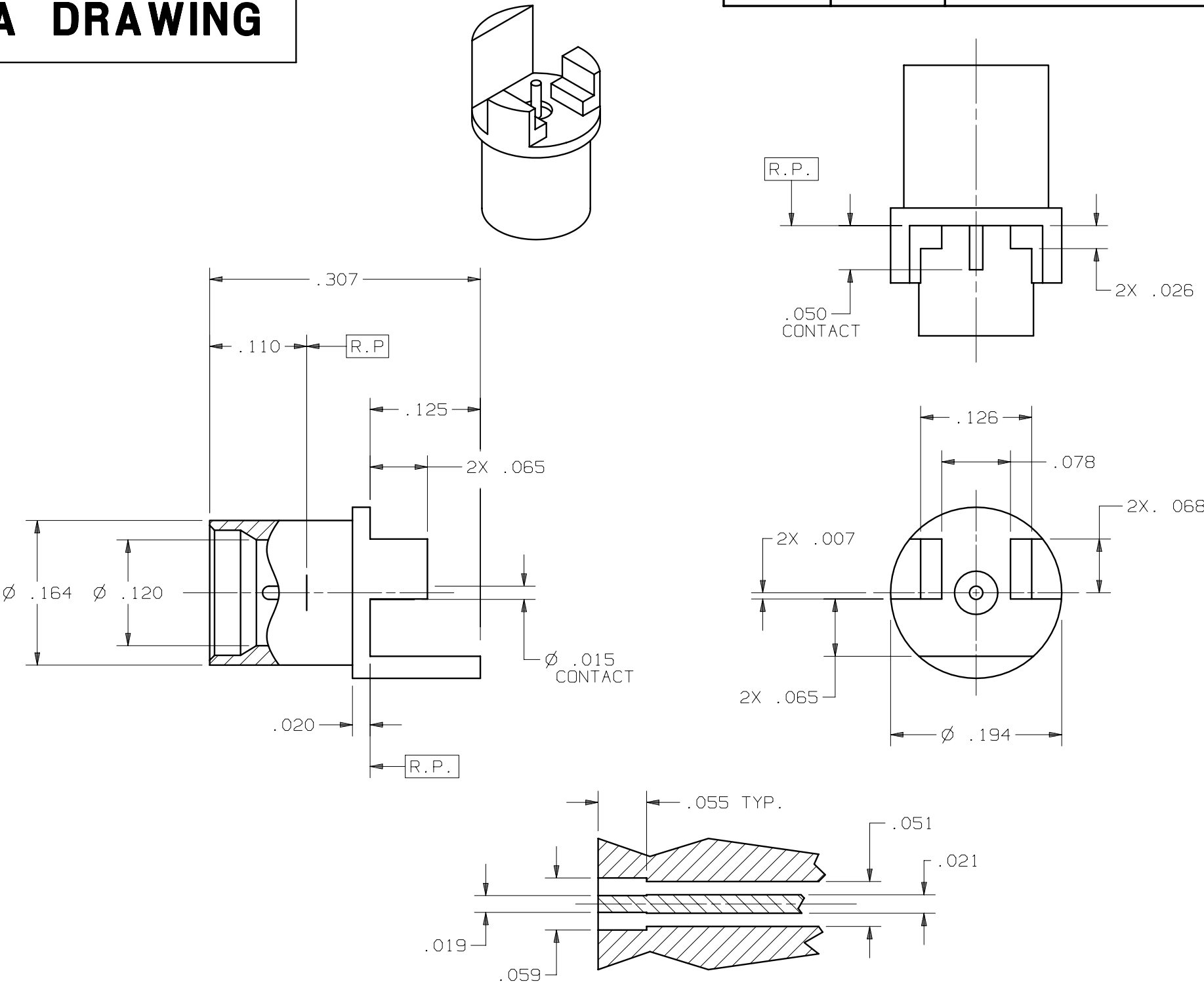
PERFORMANCE :

IMPEDANCE: 50 OHMS  
FREQ. RANGE: DC-18.0 GHz  
R.F. INSERTION LOSS: 0.1dB MAX TO 18.0 GHz  
VSWR: 1.15:1 MAX. TO 18.0 GHz

GENERAL :

SMP MALE INTERFACE DIMENSIONS PER MIL-STD-348

- NOTES:
1. FOR RECOMMENDED FOOTPRINT TO YOUR SPECIFIC PCB, CONTACT SV MICROWAVE SALES DEPARTMENT (sales@svmicro.com, 561-840-1800).



RECOMMENDED PCB MOUNT

SYM.	DESCRIPTION	DATE	APPR.	UNLESS OTHERWISE SPECIFIED: 1)ALL DIMENSIONS ARE AFTER PLATING. 2)BREAK CORNERS & EDGES .005 R.MAX. 3)CHAM. 1st & LAST THDS. 4)SURFACE ROUGHNESS 63 J MIL-STD-10. 5)DIAS. ON COMMON CENTERS TO BE CONCENTRIC WITHIN .005 T.I.R. 6)REMOVE ALL BURRS.	DIMENSIONS ARE IN INCHES TOLERANCES: DECIMALS FRACTIONAL ANGULAR .X N/A .XX N/A .XXX N/A			SV Microwave, Inc. 2400 Centrepark West Drive, Suite 100 West Palm Beach, FL 33409	
-	REL.DCN 31992	08/04	BRT						
									TITLE:
									SMP MALE STRAIGHT PCB EDGE MOUNT (LIMITED DETENT)
				DRAWN: BRT 08/24/04					
				CHECKED: BRT 08/24/04					
				APPROVED: BRT 08/24/04					DWG.NO.
					B	95077	7X		1285-6003

# Mouser Electronics

Authorized Distributor

Click to View Pricing, Inventory, Delivery & Lifecycle Information:

[Amphenol:](#)

[1285-6003](#) [1285-6003-TD](#)