

1

2

3

4

5

6

A

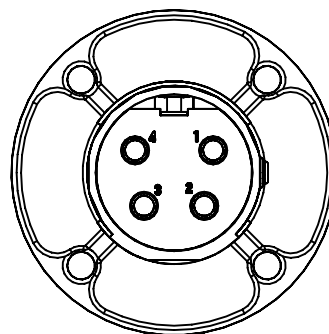
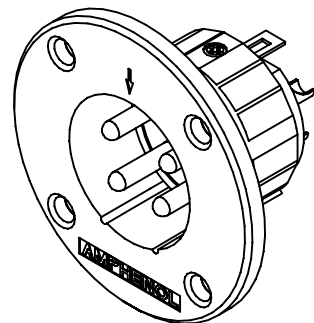
B

C

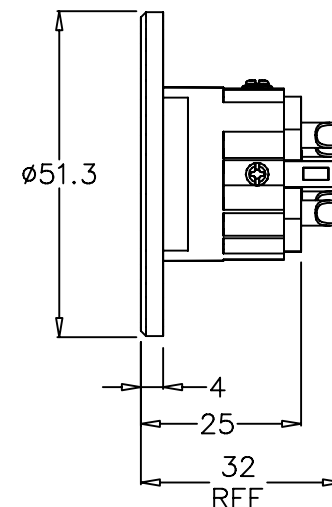
D

E

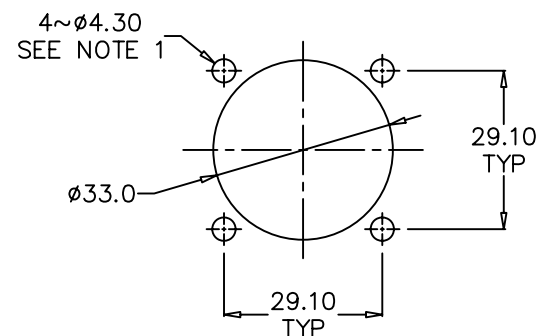
F



BACK VIEW



TOP VIEW



PANEL CUT OUT

EP-* -14 TYPE	EP/AP INSERT P/N
EP - 3 - 14	156-4402-003
EP - 4 - 14	156-4402-004
EP - 5 - 14	156-4402-005
EP - 6 - 14	156-4402-006
EP - 8 - 14	156-4402-008

NOTE: 1. THE DIAMETER OF THE 4 MOUNTING HOLES ON THE PANEL
CUT OUT DEPENDS ON THE SIZE OF THE SCREW TO BE USED
2. FOR EXAMPLE: FOR AN EP-4-14 USE ASSY No. 128037-0004

ITEM	PART No.	DWG No.	DESCRIPTION	QTY
4	248-4099-0**	248-4099-0**	EP-* -14 SHELL	1
3	990-4500-000	990-4500-000	2-32 PAN WASHER FACE SCREW	2
2	357-4400-000	357-4400-000	EP RETAINER	1
1	SEE TABLE	SEE TABLE	EP/AP PIN INSULATOR ASSEMBLY	1

UNLESS OTHERWISE SPECIFIED TOLERANCE TO BE	
LINEAR	ANGULAR
X ± 0.50	X' ± 1°
X.X ± 0.25	X'X' ± 30'
X.XX ± 0.10	X'X'X' ± 15'
BREAK ALL SHARP EDGES AND REMOVE ALL BURRS	
DO NOT SCALE	
FINISH: REFER TO COMPONENT	
DIMENSIONS IN MILLIMETRES	

THIS DOCUMENT IS THE PROPERTY OF AMPHENOL AUSTRALIA PTY. LTD.. NO PART THEREOF MAY BE REPRODUCED AND USED WITHOUT THE PRIOR WRITTEN CONSENT OF THE OWNER			
CAD FILE: 00806102	DRN: C.J.W.	DATE: 15-04-94	TITLE: EP-* -14 CUSTOMER DRAWING
MATL: REFER TO COMPONENT	CKD: M.H.	DATE: 19-11-08	
APP'D: P.M.	DATE: 19-11-08		
SCALE: 2:1 UOS	PART No: SEE TABLE	SIZE: A3	

2	OMIT PART NUMBER EP - 2 - 14 PRODUCT OBSOLETE	M.N.H.	19-11-08	8784
1	UPDATE TO AMPHENOL TITLE BLOCK & LOGO REDRAW, ADD BOM & PANEL CUT OUT	M.N.H.	12-04-01	7784
0	FIRST ISSUE	D.v.E.	15-04-94	----
REV.	CHANGE DETAILS	BY	DATE	CHG/No
Amphenol Australia Pty Ltd, 2 Fireways Blvd, Keysborough, Vic 3173				
DRAWING NO. 126037-000*				
SHEET 1 OF 1				

1

2

3

4

5

6

A

B

C

D

E

F



Mouser Electronics

Authorized Distributor

Click to View Pricing, Inventory, Delivery & Lifecycle Information:

[Amphenol:](#)

[EP-6-14](#)