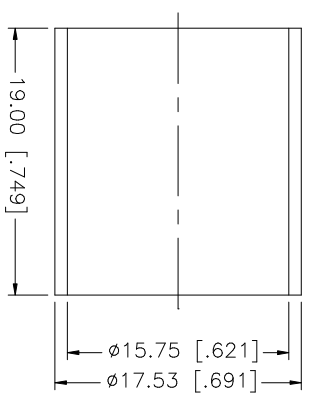
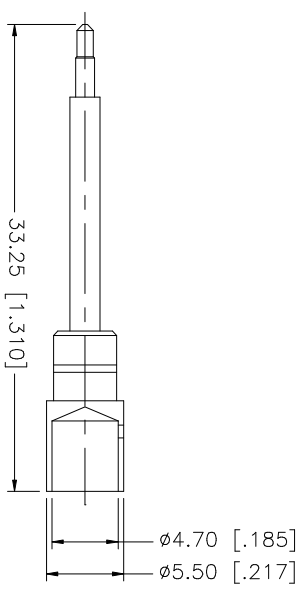
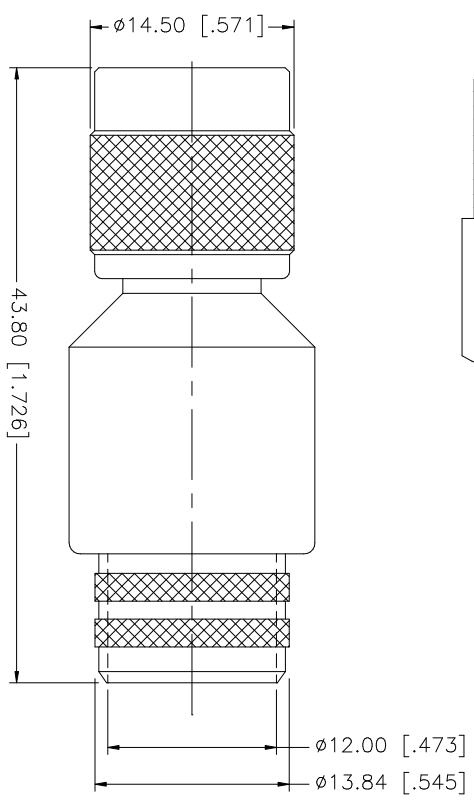
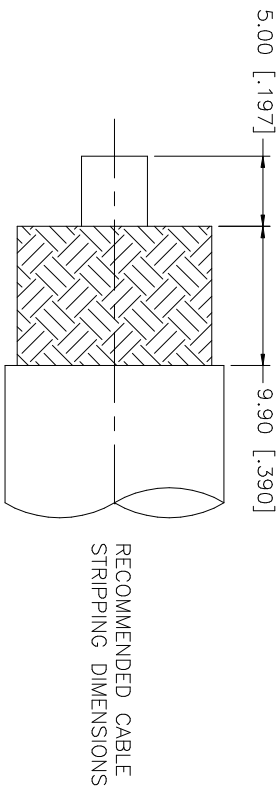


REV.	DATE	DESCRIPTION
A	10/25/99	UPDATE CONTACT PIN
B	03/18/05	UPDATE DRAWING FORMAT
C	06/01/06	ADD CRIMP NOTES



- NOTE:
1. USE CONNEX CRIMP HANDLE #47-4009-20 W/DIE #47-4009-01 TO CRIMP FERRULE.
  2. SOLDER CENTER CONTACT.

NO.	DESCRIPTION	MATERIAL	FINISH	QTY	UNLESS OTHERWISE SPECIFIED, DIMENSIONS ARE IN MILLIMETERS. DIMENSIONS IN INCHES ARE IN INCHES AND FOR CUSTOMER REFERENCE ONLY. TOLERANCES FOR MILLIMETERS ARE:	UNLESS OTHERWISE SPECIFIED, DIMENSIONS ARE IN MILLIMETERS. DIMENSIONS IN INCHES ARE IN INCHES AND FOR CUSTOMER REFERENCE ONLY. TOLERANCES FOR MILLIMETERS ARE:	APPROVALS	DATE	PART DESCRIPTION	
8					0.5 - 8mm ± 0.20mm	0.5 - 8mm ± 0.20mm	DRAWN	G.R.S.	06/01/06	<p style="text-align: center;"><b>Amphenol Connex</b></p> <p style="text-align: center;">TNC CRIMP PLUG (FOR LMR 600 CABLE)</p> <p style="text-align: center;">1222417</p>
7					8 - 30mm ± 0.40mm	8 - 30mm ± 0.40mm	CHECKED			
6					30 - 120mm ± 0.50mm	30 - 120mm ± 0.50mm	ISSUED			
5					UNLESS OTHERWISE SPECIFIED, DIMENSIONS ARE IN MILLIMETERS. DIMENSIONS IN INCHES ARE IN INCHES AND FOR CUSTOMER REFERENCE ONLY. TOLERANCES FOR MILLIMETERS ARE:	UNLESS OTHERWISE SPECIFIED, DIMENSIONS ARE IN MILLIMETERS. DIMENSIONS IN INCHES ARE IN INCHES AND FOR CUSTOMER REFERENCE ONLY. TOLERANCES FOR MILLIMETERS ARE:	SHEET	1 OF 1		
4	FERRULE	BRASS	NICKEL	1	.020 - .315 = ± 0.007"	.020 - .315 = ± 0.007"	CAD FILE			
3	CONTACT PIN	BRASS	GOLD	1	.315 - 1.180 = ± 0.015"	.315 - 1.180 = ± 0.015"	C:/122/122417.DWG			
2	INSULATOR BODY	TEFLON	NATURAL	1	1.180 - 4.724 = ± 0.020"	1.180 - 4.724 = ± 0.020"	DWG. NO. 122417.DWG			
1		BRASS	NICKEL	1			REV. C	SIZE A	SCALE NA	

# Mouser Electronics

Authorized Distributor

Click to View Pricing, Inventory, Delivery & Lifecycle Information:

[Amphenol:](#)

[122417](#)