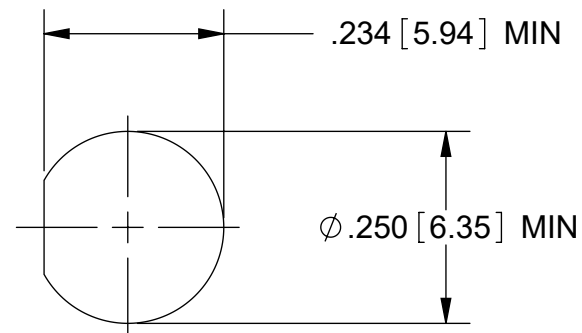
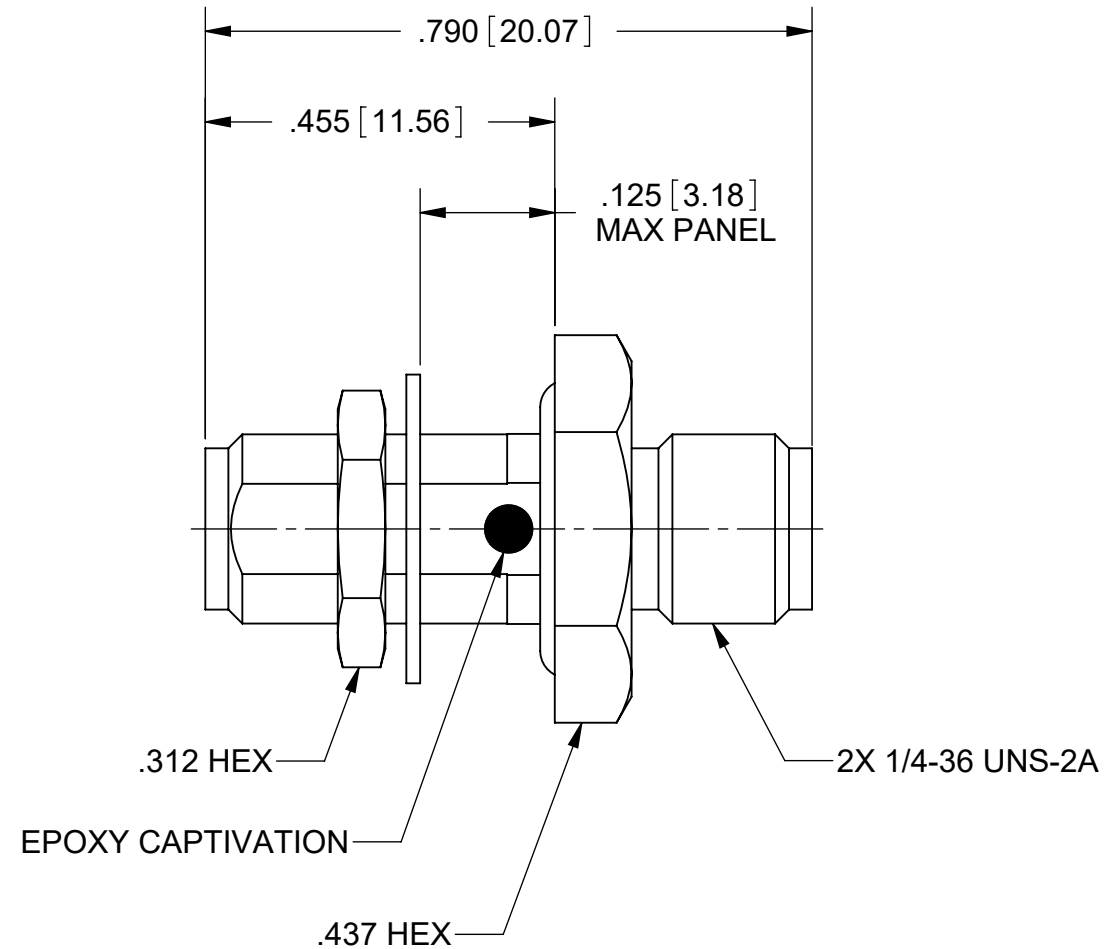
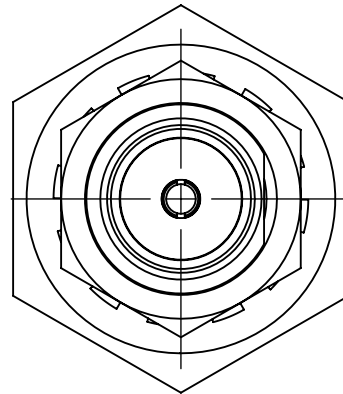


PRODUCT DATA DRAWING

| REVISION HISTORY | | | |
|------------------|-------------|-------|----------|
| REV | DESCRIPTION | DATE | APPROVED |
| - | NRN 44867 | 05/20 | STW |
| | | | |
| | | | |



RECOMMENDED MOUNTING HOLE

MATERIAL:

BODY, CONTACT
& HEX NUT:

BERYLLIUM COPPER

INSULATOR:

PTFE

O-RING:

SILICONE RUBBER

LOCK WASHER:

PHOSPHOR BRONZE


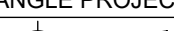
FINISH:

BODY, CONTACT,
LOCK WASHER &
COUPLING NUT:

GOLD OVER COPPER

PERFORMANCE:

IMPEDANCE: 50 OHMS
FREQ. RANGE: DC TO 18.0 GHz.

| | | | | | | | |
|--|-----------|---|--|---|--|--|--|
| MATERIAL: | SEE NOTES | DIMENSIONS ARE IN INCHES TOLERANCES: FRACTIONAL: ±1/64 ANGULAR: X° ±1°0' X'X" ±15' | | UNLESS OTHERWISE SPECIFIED 1) ALL DIMENSIONS ARE IN INCHES (MILLIMETERS) 2) ALL DIMENSIONS ARE AFTER PLATING. 3) BREAK CORNERS & EDGES .005 R. MAX. 4) CHAM. 1ST & LAST THREADS. 5) SURFACE ROUGHNESS 63-MIL-STD-10. 6) DIA.'S ON COMMON CENTERS TO BE CONCENTRIC WITHIN .005 T.I.R. 7) REMOVE ALL BURRS | |  www.svmicrowave.com | |
| FINISH: | SEE NOTES | DECIMAL: .X ±.030 .XX ±.010 .XXX ±.005 | | | | TITLE: SMA JACK TO JACK (NON-MAGNETIC) | |
| SURFACE AREA: | N/A | INTERPRET DIMENSIONS AND TOLERANCES PER ASME Y14.5M - 1994 | | | | BULKHEAD ADAPTER | |
| PROPRIETARY | | THIRD ANGLE PROJECTION | | DRAWN: KRR 05/27/20 | | SIZE DWG. NO. | |
| THE INFORMATION CONTAINED IN THIS DRAWING IS THE SOLE PROPERTY OF SV MICROWAVE, INC. ANY REPRODUCTION IN PART OR AS A WHOLE WITHOUT THE WRITTEN PERMISSION OF SV MICROWAVE, INC IS PROHIBITED. | |  | | CHECKED: STW 05/27/20 | | 1129-4004 | |
| | | | | APPROVED: STW 05/27/20 | | SCALE: 4:1 | |
| | | | | | | SHEET 1 OF 1 | |

Mouser Electronics

Authorized Distributor

Click to View Pricing, Inventory, Delivery & Lifecycle Information:

[Amphenol:](#)

[1129-4004](#)