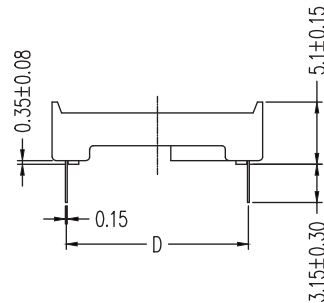
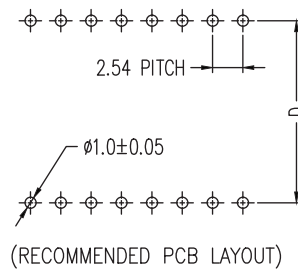
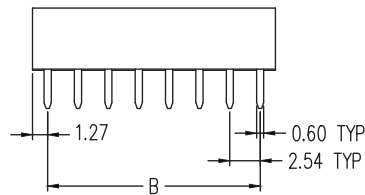
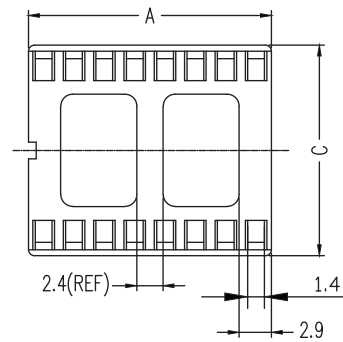
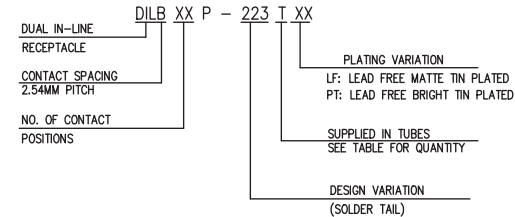


CATALOG NO	NO.OF CONTACTS	TABLE OF DIMENSIONS			
		A±0.30	B±0.25	C±0.30	D±0.20
DILB8P-223TXX	8P	10.16	7.62	10.16	7.62
DILB14P-223TXX	14P	17.78	15.24		
DILB16P-223TXX	16P	20.32	17.78		
DILB18P-223TXX	18P	22.86	20.32		
DILB20P-223TXX	20P	25.40	22.86		
DILB24P-224TXX	24P	30.48	27.94	17.78	15.24
DILB24P-223TXX	24P	30.48	27.94		
DILB28P-223TXX	28P	35.56	33.02		
DILB32P-223TXX	32P	40.64	38.10		
DILB40P-223TXX	40P	50.80	48.26		
DILB42P-223TXX	42P	53.34	50.80		



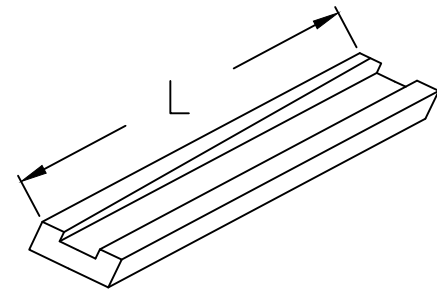
NOTES

1. MATERIALS
HOUSING: POLYAMIDE, UL94V-0 COLOR IN BLACK.
CONTACT: COPPER ALLOY.
2. FINISH
100u" MIN. MATTE OR BRIGHT TIN OVER 50u" MIN. NICKEL.
3. PERFORMANCE CHARACTERISTICS
 - A) OPERATING VOLTAGE: 200VAC;
 - B) CONTACT RESISTANCE: 30 MILLIOHMS MAX. AT 6 VDC;
 - C) CURRENT RATING: 1 AMP. MAX.;
 - D) OPERING TEMPERATURE: CONTINUOUS, -55°C TO 105°C;
 - E) INSULATION RESISTANCE: 1000 MEGAOHMS MIN AT 500 VDC;
 - F) DIELECTRIC WITHSTANDING VOLTAGE: 1000 VAC RMS MIN.;
 - G) DURABILITY: NO ELECTRICAL DEGRADATION AFTER 25 CYCLES;
 - H) THERMAL SHOCK: NO PHYSICAL OR ELECTRICAL DEGRADATION PER MIN-STD-1344, METHOD 1003, COND A;
 - I) MOISTURE RESISTANCE: 300 MEGAOHMS MIN PER MIL-STD-202, METHOD 106. OMIT STEPS 7a AND 7b;
 - J) VIBRATION: NO ELECTRICAL INTERRUPTION GREATER THAN 1 MICROSECOND PER MIL-STD-1344. METHOD 2005 COND III;
 - K) MECHANICAL SHOCK: NO ELECTRICAL INTERRUPTION GREATER THAN 1 MICROSECOND WHEN 17.64 oz (500g) IS APPLIED FOR 0.75 MILLISECONDS;
 - L) FLAMMABILITY: UL94 V-0;
 - M) INSERTION FORCE 340.2g /CONTACT MAX.;
 - WITHDRAWAL FORCE: 14.5g /CONTACT MIN.;
- R) ORDERING INFORMATION

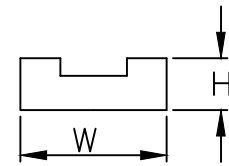


4. DILBXXP-22XTLF: THE HOUSING WILL WITHSTAND EXPOSURE TO 260° PER PERK TEMPERATURE FOR 10 SECONDS IN A WAVE SOLDER APPLICATION.
5. RECEPTACLE ACCEPTS 0.15 +/-0.03 mm THICK IC LEAD.

mat'l. code				surface ISO1302	tolerance ISO406 ISO1101	projection ISO1101	product family EDGE CARD
ltr	ecn no	dr	date	tolerances unless otherwise specified			title
A	T05-0016	W.L	2005-01-24	angles	.X ± 0.3	MM	DILB ASSEMBLY
B	T06-0053	J.H	2006-03-28	dr	.XX ± 0.2	scale 1:1	
C	T06-0068	J.H	2006-07-07	0' ± 2'	.XXX ± 0.05		
D	ELX-I-24650	SAL	2016-08-03	dr	WADE LIU	2005-01-05	
E	ELX-I-24704	SAL	2016-08-11	enr	WADE LIU	2005-01-05	
F	ELX-I-26235	J.J	2017-03-03	chr	S. ALOSUS	2017-03-03	dwg no
				appd	BUU K PAUL	2017-03-03	sheet 1 of 2
sheet index	revision	F	F				size
	sheet	1	2				A4
							type
							Product-Customer Drw



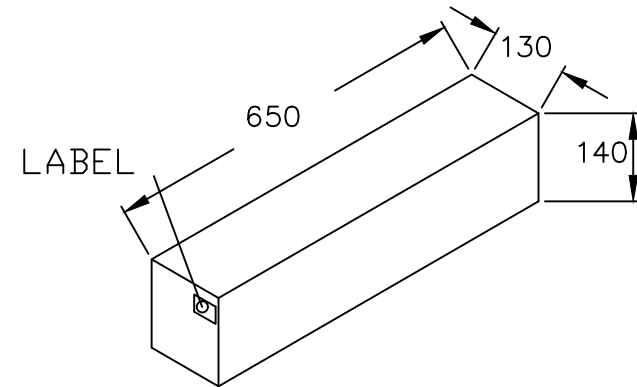
L	635	635
W	136	136
H	116	116



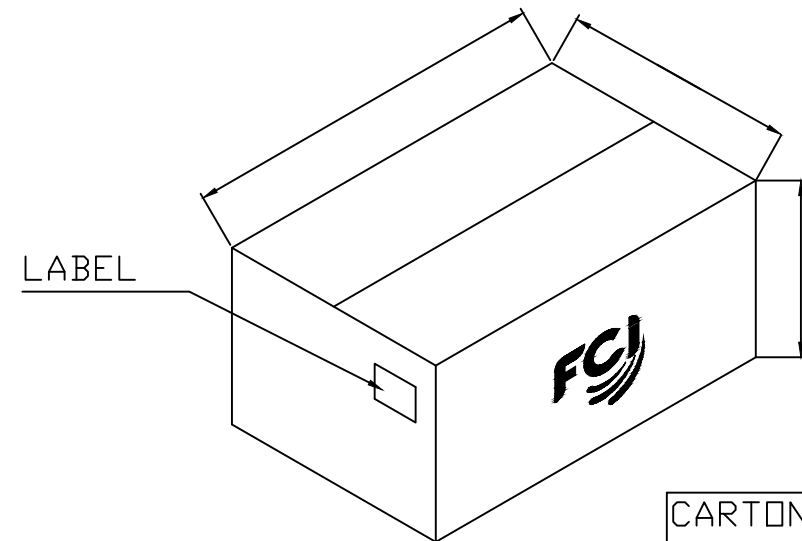
TUBE

DILB PACKING LIST FOR TUBE

DILB8P-223TXX	8P	60	100	6000	3	18000
DILB14P-223TXX	14P	34	100	3400	3	10200
DILB16P-223TXX	16P	30	100	3000	3	9000
DILB18P-223TXX	18P	26	100	2600	3	7800
DILB20P-223TXX	20P	24	100	2400	3	7200
DILB24P-224TXX	24P	20	100	2000	3	6000
DILB24P-223TXX	24P	20	60	1200	3	3600
DILB28P-223TXX	28P	17	60	1020	3	3060
DILB32P-223TXX	32P	15	60	900	3	2700
DILB40P-223TXX	40P	12	60	720	3	2160
DILB42P-223TXX	42P	11	60	660	3	1980



BOX



CARTON

mat'l. code				surface ISO1302 <input checked="" type="checkbox"/>	tolerance ISO406 ISO1101	projection 	product family EDGE CARD
ltr	ecn no	dr	date	tolerances unless otherwise specified			title
D	ELX-I-24650	SAL	2016-08-03	angles	.X ± 0.3	MM 	DILB ASSEMBLY
E	ELX-I-24704	SAL	2016-08-11	linear	.XX ± 0.2		
F	ELX-I-26235	J.J	2017-03-03	0° ± 2°	.XXX ± 0.05		
				dr	WADE LIU	2005-01-05	dwg no
				enrg	WADE LIU	2005-01-05	sheet 2 of 2
				chr	S. ALOSUIS	2017-03-03	size
				appd	BUU K PAUL	2017-03-03	A4
sheet index	revision sheet	F	F				type
		1	2				Product-Customer Drw

Mouser Electronics

Authorized Distributor

Click to View Pricing, Inventory, Delivery & Lifecycle Information:

[Amphenol:](#)

[DILB8P-223TLF](#) [DILB24P-224TLF](#) [DILB20P-223TLF](#) [DILB16P-223TLF](#) [DILB24P-223TLF](#) [DILB28P-223TLF](#)
[DILB40P-223TLF](#) [DILB14P-223TLF](#) [DILB42P-223TLF](#) [DILB18P-223TLF](#) [DILB32P-223TLF](#)