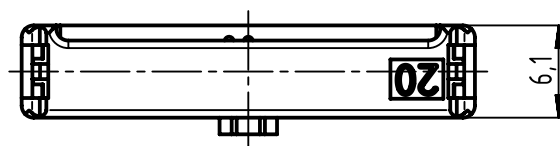
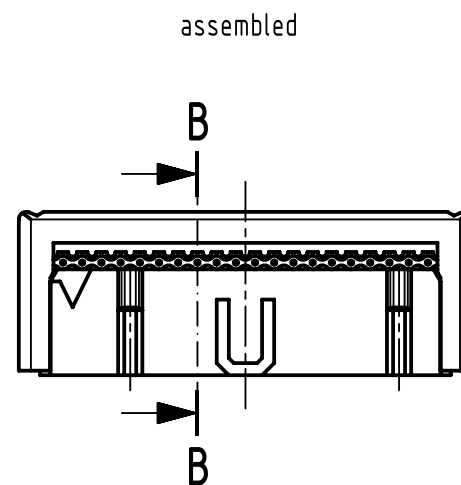
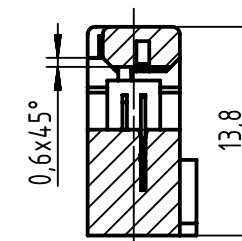


see table for coding,  
feature arrangement and style



pre-assembled

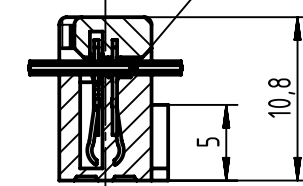
A-A



assembled

B-B

flat cable  
AWG 26/7 - 28/7  
(is not in scope of delivery)



coding style table



style A:  
for connectors 6-pole





style B:  
for connectors  
from 10 to 14-pole





style C:  
for connectors  
from 16 to 64-pole

full range of P/N's and  
dimensions shown on page 2/2

further information see product data sheet

		All Dimensions in mm Original Size DIN A3		Scale 2:1		Free size tol. IEC 60603-13		Ref.  Sub.					
		All rights reserved Department EL PD		Created by TADJE		Inspected by STORCK		Standardisation HOFFMANN		Date 2020-05-05		State Final Release	
HARTING Electronics GmbH D-32339 Espelkamp				Title SEK 18 female connector with open end cover								Doc-Key / ECM-Nr. 100662934/UGD/001/C 500000172195	
				Type TB		Number 09185XXX803						Rev. C	

1	2	3	4	5	6	7	8					
A								A				
B	performance level			grey	-	quantity	dimensions				B	
	no. of contacts	part number	part number				part number	A max.	B	C		D
	06	09 18 506 7803	09 18 506 6803				09 18 506 5803	12,2	2 x 2,54 (=5,08)	2		7,62
	10	09 18 510 7803	09 18 510 6803				09 18 510 5803	17,3	4 x 2,54 (=10,16)	3,8		12,7
	14	09 18 514 7803	09 18 514 6803				09 18 514 5803	22,4	6 x 2,54 (=15,24)	3,8		17,78
	16	09 18 516 7803	09 18 516 6803				09 18 516 5803	24,9	7 x 2,54 (=17,78)	3,8		20,32
	20	09 18 520 7803	09 18 520 6803				09 18 520 5803	30	9 x 2,54 (=22,86)	3,8		25,4
	26	09 18 526 7803	09 18 526 6803				09 18 526 5803	37,6	12 x 2,54 (=30,48)	3,8		33,02
	30	09 18 530 7803	09 18 530 6803				09 18 530 5803	42,7	14 x 2,54 (=35,56)	3,8		38,50
	34	09 18 534 7803	09 18 534 6803				09 18 534 5803	47,8	16 x 2,54 (=40,64)	3,8		43,18
	40	09 18 540 7803	09 18 540 6803				09 18 540 5803	55,4	19 x 2,54 (=48,26)	3,8		50,8
	C	50	09 18 550 7803				09 18 550 6803	09 18 550 5803	68,1	24 x 2,54 (=60,96)		3,8
60		09 18 560 7803	09 18 560 6803	09 18 560 5803	80,8	29 x 2,54 (=73,66)	3,8	76,6				
64		09 18 564 7803	09 18 564 6803	09 18 564 5803	85,9	31 x 2,54 (=78,74)	3,8	81,28				
06		09 18 506 7803 001	09 18 506 6803 001	09 18 506 5803 001	12,2	2 x 2,54 (=5,08)	2	7,62				
10		09 18 510 7803 001	09 18 510 6803 001	09 18 510 5803 001	17,3	4 x 2,54 (=10,16)	3,8	12,7				
14		09 18 514 7803 001	09 18 514 6803 001	09 18 514 5803 001	22,4	6 x 2,54 (=15,24)	3,8	17,78				
16		09 18 516 7803 001	09 18 516 6803 001	09 18 516 5803 001	24,9	7 x 2,54 (=17,78)	3,8	20,32				
20		09 18 520 7803 001	09 18 520 6803 001	09 18 520 5803 001	30	9 x 2,54 (=22,86)	3,8	25,4				
26		09 18 526 7803 001	09 18 526 6803 001	09 18 526 5803 001	37,6	12 x 2,54 (=30,48)	3,8	33,02				
30		09 18 530 7803 001	09 18 530 6803 001	09 18 530 5803 001	42,7	14 x 2,54 (=35,56)	3,8	38,50				
34		09 18 534 7803 001	09 18 534 6803 001	09 18 534 5803 001	47,8	16 x 2,54 (=40,64)	3,8	43,18				
D		40	09 18 540 7803 001	09 18 540 6803 001	09 18 540 5803 001	55,4	19 x 2,54 (=48,26)	3,8	50,8	D		
	50	09 18 550 7803 001	09 18 550 6803 001	09 18 550 5803 001	68,1	24 x 2,54 (=60,96)	3,8	63,5				
	60	09 18 560 7803 001	09 18 560 6803 001	09 18 560 5803 001	80,8	29 x 2,54 (=73,66)	3,8	76,6				
	64	09 18 564 7803 001	09 18 564 6803 001	09 18 564 5803 001	85,9	31 x 2,54 (=78,74)	3,8	81,28				
	06	09 18 506 7803 58U	09 18 506 6803 58U	09 18 506 5803 58U	5000 pieces	12,2	2 x 2,54 (=5,08)	2	7,62			
	10	09 18 510 7803 58U	09 18 510 6803 58U	09 18 510 5803 58U	5000 pieces	17,3	4 x 2,54 (=10,16)	3,8	12,7			
	14	09 18 514 7803 58U	09 18 514 6803 58U	09 18 514 5803 58U	5000 pieces	22,4	6 x 2,54 (=15,24)	3,8	17,78			
	16	09 18 516 7803 58U	09 18 516 6803 58U	09 18 516 5803 58U	5000 pieces	24,9	7 x 2,54 (=17,78)	3,8	20,32			
	20	09 18 520 7803 58U	09 18 520 6803 58U	09 18 520 5803 58U	5000 pieces	30	9 x 2,54 (=22,86)	3,8	25,4			
	26	09 18 526 7803 58U	09 18 526 6803 58U	09 18 526 5803 58U	5000 pieces	37,6	12 x 2,54 (=30,48)	3,8	33,02			
	30	09 18 530 7803 58U	09 18 530 6803 58U	09 18 530 5803 58U	5000 pieces	42,7	14 x 2,54 (=35,56)	3,8	38,50			
	E	34	09 18 534 7803 58U	09 18 534 6803 58U	09 18 534 5803 58U	3000 pieces	47,8	16 x 2,54 (=40,64)	3,8		43,18	E
40		09 18 540 7803 58U	09 18 540 6803 58U	09 18 540 5803 58U	3000 pieces	55,4	19 x 2,54 (=48,26)	3,8	50,8			
F						All Dimensions in mm Original Size DIN A3	Scale 1:1	Free size tol.	Ref. Sub.	F		
						All rights reserved Department EL PD	Created by TADJE	Inspected by STORCK	Standardisation HOFFMANN		Date 2020-05-05	State Final Release
					Title SEK 18 female connector with open end cover						Doc-Key / ECM-Nr. 100662934/UGD/001/C 500000172195	
					Type TB		Number 09185XXX803		Rev. C		Page 2/2	
1	2	3	4	5	6	7	8					

# Mouser Electronics

Authorized Distributor

Click to View Pricing, Inventory, Delivery & Lifecycle Information:

HARTING:

09185346803001