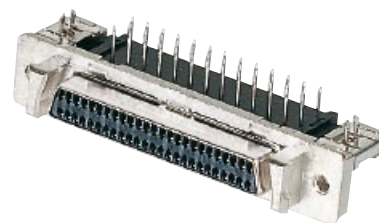


Number of contacts

**20–68**

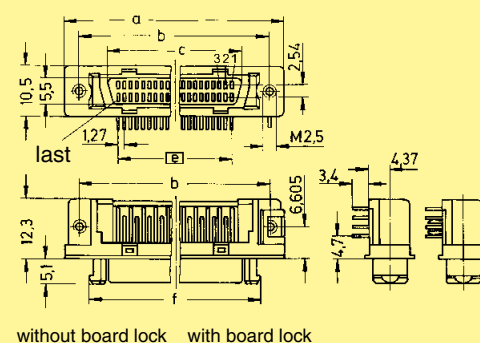


Female connectors, angled

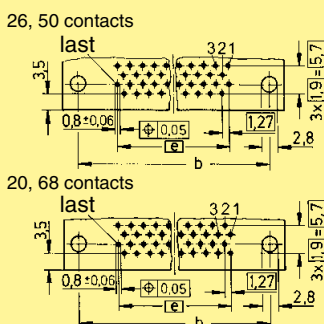
Identification	No. of contacts	Part No.
Female connectors with angled solder pins		
	20	60 01 020 51 ...
	26	60 01 026 51 ...
	50	60 01 050 51 ...
	68	60 01 068 51 ...
Panel fixing	Board fixing	
M 2.5	M 2.5	32
M 2.5	Board lock	40

Dimensions

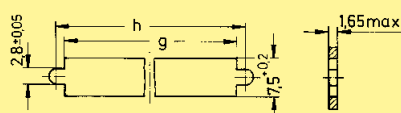
	a	b <sub>±0.1</sub>	c	e	f	g	h
20	33.40	27.40	15.60	9 x 1.27 = 11.43	23.24	23.70	27.45
26	37.21	31.24	19.41	12 x 1.27 = 15.24	27.05	27.50	31.25
50	52.45	46.45	34.65	24 x 1.27 = 30.48	42.29	42.80	46.50
68	63.88	57.88	46.08	33 x 1.27 = 41.91	53.72	54.20	57.90



Board drillings



Panel cut out



Dimensions in mm

# Mouser Electronics

Authorized Distributor

Click to View Pricing, Inventory, Delivery & Lifecycle Information:

HARTING:

60010205140