

Han EMC 10 Hood Side Entry M40

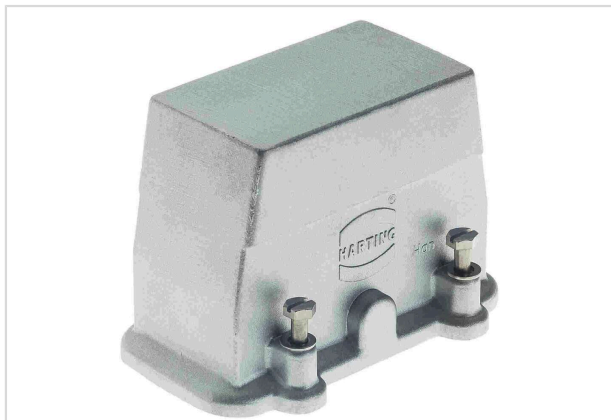


Image is for illustration purposes only. Please refer to product description.

Part number	19 62 010 0543
Specification	Han EMC 10 Hood Side Entry M40
HARTING eCatalogue	https://b2b.harting.com/19620100543

Identification

Category	Hoods/Housings
Series of hoods/housings	Han [®] EMC
Type of hood/housing	Hood

Version

Size	10 B
Version	Side entry
Cable entry	1x M40
Locking type	Screw locking
Field of application	Hoods/Housings for higher EMC requirements

Technical characteristics

Limiting temperature	-40 ... +125 °C
Note on the limiting temperature	For use as a connector according to IEC 61984.
Degree of protection acc. to IEC 60529	IP65
Type rating acc. to UL 50 / UL 50E	4 12

Material properties

Material (hood/housing)	Aluminium die-cast
Surface (hood/housing)	Uncoated
Colour (hood/housing)	Unpainted
RoHS	compliant



Pushing Performance
Since 1945

Material properties

ELV status	compliant
China RoHS	e
REACH Annex XVII substances	Not contained
REACH ANNEX XIV substances	Not contained
REACH SVHC substances	Not contained
California Proposition 65 substances	Yes
California Proposition 65 substances	Nickel

Specifications and approvals

UL / CSA	UL 1977 ECBT2.E235076
	CSA-C22.2 No. 182.3 ECBT8.E235076
Approvals	CE
	DNV GL

Commercial data

Packaging size	1
Net weight	242.75 g
Country of origin	Germany
European customs tariff number	85389099
GTIN	5713140132450
ETIM	EC000437
eCl@ss	27440202 Shell for industrial connectors

Mouser Electronics

Authorized Distributor

Click to View Pricing, Inventory, Delivery & Lifecycle Information:

[HARTING:](#)

[19620100543](#)