

## Han A Hood Coupler 1 Lever M20

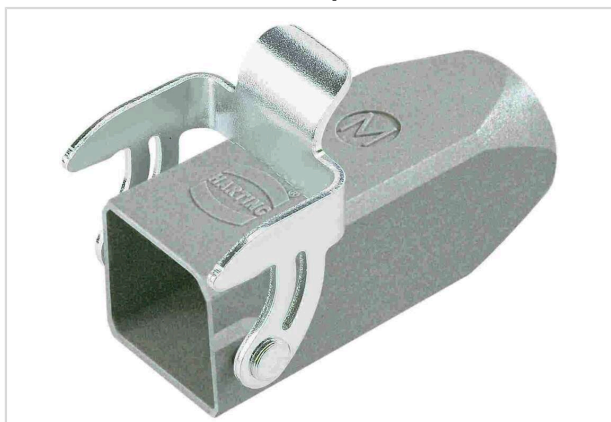


Image is for illustration purposes only. Please refer to product description.

Part number	19 20 003 1750
Specification	Han A Hood Coupler 1 Lever M20
HARTING eCatalogue	<a href="https://b2b.harting.com/19200031750">https://b2b.harting.com/19200031750</a>

### Identification

Category	Hoods/Housings
Series of hoods/housings	Han A <sup>®</sup>
Type of hood/housing	Cable to cable housing

### Version

Size	3 A
Version	Top entry
Cable entry	1x M20
Locking type	Single locking lever
Field of application	Standard Hoods/housings for industrial applications
Pack contents	Please order seal screw separately.

### Technical characteristics

Limiting temperature	-40 ... +125 °C
Note on the limiting temperature	For use as a connector according to IEC 61984.
Degree of protection acc. to IEC 60529	IP44
	IP65 With seal screw
	IP67 With seal screw
Type rating acc. to UL 50 / UL 50E	12

### Material properties

Material (hood/housing)	Zinc die-cast
Surface (hood/housing)	Powder-coated
Colour (hood/housing)	RAL 7037 (dust grey)



**Pushing Performance**  
Since 1945

## Material properties

Material (locking)	Steel
Surface (locking)	Zinc plated
RoHS	compliant
ELV status	compliant
China RoHS	e
REACH Annex XVII substances	Not contained
REACH ANNEX XIV substances	Not contained
REACH SVHC substances	Not contained
California Proposition 65 substances	Not contained
Fire protection on railway vehicles	EN 45545-2 (2020-08)
Requirement set with Hazard Levels	R1 (HL 1-3) R7 (HL 1-3)

## Specifications and approvals

UL / CSA	UL 1977 ECBT2.E235076
Approvals	CE DNV GL

## Commercial data

Packaging size	10
Net weight	71.61 g
Country of origin	Romania
European customs tariff number	85389099
GTIN	5713140124639
ETIM	EC000437
eCI@ss	27440202 Shell for industrial connectors

# Mouser Electronics

Authorized Distributor

Click to View Pricing, Inventory, Delivery & Lifecycle Information:

[HARTING:](#)

[19200031750](#)