



Pushing Performance  
Since 1945

# Han Yellock Module QL 10A, 1,5qmm

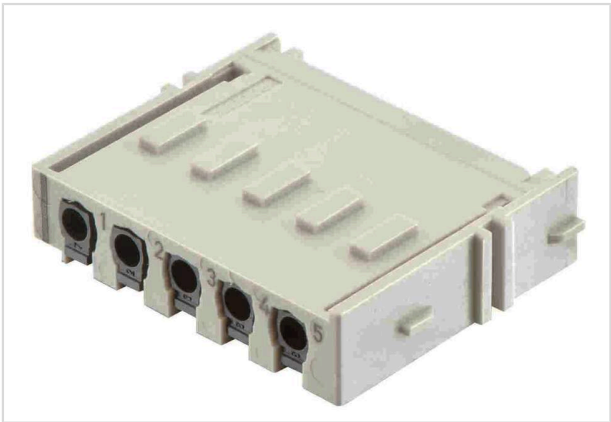


Image is for illustration purposes only. Please refer to product description.

Part number	11 05 105 2634
Specification	Han Yellock Module QL 10A, 1,5qmm
HARTING eCatalogue	<a href="https://b2b.harting.com/11051052634">https://b2b.harting.com/11051052634</a>

## Identification

Category	Inserts
Series	Han-Yellock®
Element	Module

## Version

Termination method	Han-Quick Lock® termination
Gender	Male
Number of contacts	5
Details	Black slide

## Technical characteristics

Conductor cross-section	0.25 ... 1.5 mm²
Rated current	10 A
Rated voltage	500 V
Rated impulse voltage	6 kV
Pollution degree	3
Insulation resistance	>10 <sup>10</sup> Ω
Contact resistance	≤2 mΩ
Stripping length	10 mm
Limiting temperature	-40 ... +125 °C
Mating cycles	≥500



**Pushing Performance**  
Since 1945

## Material properties

Material (insert)	Polycarbonate (PC)
Colour (insert)	RAL 7032 (pebble grey)
Material (contacts)	Copper alloy
Surface (contacts)	Silver plated
Material flammability class acc. to UL 94	V-0
RoHS	compliant with exemption
RoHS exemptions	6(c): Copper alloy containing up to 4 % lead by weight
ELV status	compliant with exemption
China RoHS	50
REACH Annex XVII substances	Not contained
REACH ANNEX XIV substances	Not contained
REACH SVHC substances	Yes
REACH SVHC substances	Lead
ECHA SCIP number	5dbb3851-b94e-4e88-97a1-571845975242
California Proposition 65 substances	Yes
California Proposition 65 substances	Lead Nickel
Fire protection on railway vehicles	EN 45545-2 (2020-08)
Requirement set with Hazard Levels	R22 (HL 1-3) R23 (HL 1-3)

## Specifications and approvals

Specifications	IEC 60664-1 IEC 61984
Approvals	DNV GL

## Commercial data

Packaging size	2
Net weight	12.8 g
Country of origin	Romania
European customs tariff number	85366990
GTIN	5713140109667
ETIM	EC000438
eCl@ss	27440205 Contact insert for industrial connectors

# Mouser Electronics

Authorized Distributor

Click to View Pricing, Inventory, Delivery & Lifecycle Information:

[HARTING:](#)

[11051052634](#)