



Pushing Performance  
Since 1945

# MPP-PFT-T1/T1-2p-F-P

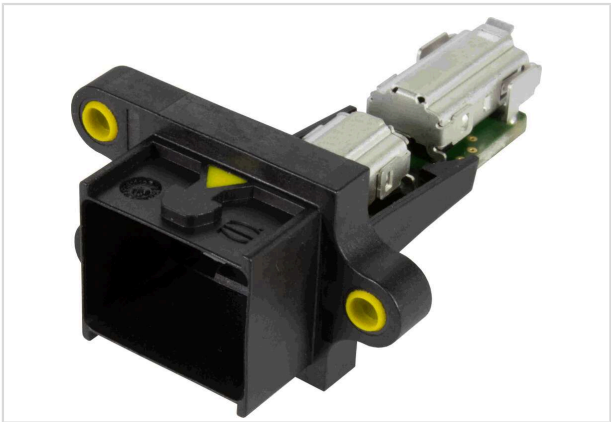


Image is for illustration purposes only. Please refer to product description.

Part number	09 51 222 0001
Specification	MPP-PFT-T1/T1-2p-F-P
HARTING eCatalogue	<a href="https://b2b.harting.com/09512220001">https://b2b.harting.com/09512220001</a>

## Identification

Category	Connectors
Series	HARTING Mini PushPull
Identification	HARTING T1 Industrial
Element	Panel feed trough set
Type of hood/housing	Bulkhead mounted housing

## Version

Shielding	Fully shielded, 360° shielding contact
Number of contacts	2
further contacts	+ shielding
Locking type	PushPull

## Technical characteristics

Rated current	1.5 A
Rated voltage	60 V DC
Transmission characteristics	1 GHz
Data rate	10 Mbit/s
	100 Mbit/s
	1 Gbit/s
Limiting temperature	-40 ... +70 °C
Mating cycles	≥750
Degree of protection acc. to IEC 60529	IP65 / IP67



**Pushing Performance**  
Since 1945

## Technical characteristics

Test voltage $U_{DC}$	1 kV (contact-contact)
	2.25 kV (contact-ground)

## Material properties

Material (contacts)	Copper alloy
Surface (contacts)	Tin plated
Material (hood/housing)	Polybutylene terephthalate (PBT)
Colour (hood/housing)	Black
Material (seal)	PTS
Colour (seal)	Yellow
Material flammability class acc. to UL 94	V-0
RoHS	compliant
ELV status	compliant
China RoHS	e
REACH Annex XVII substances	Not contained
REACH ANNEX XIV substances	Not contained
REACH SVHC substances	Not contained
California Proposition 65 substances	Yes
California Proposition 65 substances	Nickel
Fire protection on railway vehicles	EN 45545-2 (2020-08)
Requirement set with Hazard Levels	R26

## Specifications and approvals

Specifications	IEC 63171-6
----------------	-------------

## Commercial data

Packaging size	1
Net weight	7.5 g
Country of origin	Germany
European customs tariff number	85366990
GTIN	5713140570665
ETIM	EC002636
eCl@ss	27440114 Rectangular connector (for field assembly)

# Mouser Electronics

Authorized Distributor

Click to View Pricing, Inventory, Delivery & Lifecycle Information:

[HARTING:](#)

[09512220001](#)