

## Han Vv 20-2 Multiplier

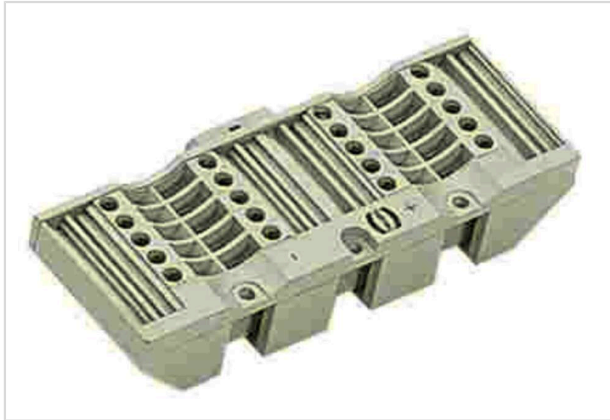


Image is for illustration purposes only. Please refer to product description.

Part number	09 42 020 0121
Specification	Han Vv 20-2 Multiplier
HARTING eCatalogue	<a href="https://b2b.harting.com/09420200121">https://b2b.harting.com/09420200121</a>

### Identification

Category	Inserts
Series	Han D <sup>®</sup> AV
Element	Distributor
Specification	2 x10 termination points

### Version

Termination method	Screw termination
Details	Optionally mountable to terminal block connectors

### Technical characteristics

Conductor cross-section	0.2 ... 2.5 mm <sup>2</sup>
Rated current	16 A
Rated voltage conductor-earth	400 V
Rated voltage conductor-conductor	690 V
Rated impulse voltage	6 kV
Pollution degree	3
Rated voltage acc. to UL	600 V
Insulation resistance	>10 <sup>10</sup> Ω
Tightening torque	0.5 Nm
Limiting temperature	-40 ... +125 °C

### Material properties

Material (insert)	Polycarbonate (PC)
-------------------	--------------------



**Pushing Performance**  
Since 1945

## Material properties

Colour (insert)	RAL 7032 (pebble grey)
Material (contacts)	Copper alloy
Surface (contacts)	Tin plated
Material flammability class acc. to UL 94	V-0
RoHS	not compliant
ELV status	not compliant
China RoHS	e
REACH Annex XVII substances	Not contained
REACH ANNEX XIV substances	Not contained
REACH SVHC substances	Yes
REACH SVHC substances	Lead
ECHA SCIP number	5dbb3851-b94e-4e88-97a1-571845975242
California Proposition 65 substances	Yes
California Proposition 65 substances	Lead Nickel
Fire protection on railway vehicles	EN 45545-2 (2020-08)
Requirement set with Hazard Levels	R22 (HL 1-3) R23 (HL 1-3)

## Specifications and approvals

Specifications	IEC 60664-1 IEC 61984
UL / CSA	UL 1977 ECBT2.E235076

## Commercial data

Packaging size	1
Net weight	87.4 g
Country of origin	Germany
European customs tariff number	85366990
GTIN	5713140058637
ETIM	EC000438
eCl@ss	27440205 Contact insert for industrial connectors

# Mouser Electronics

Authorized Distributor

Click to View Pricing, Inventory, Delivery & Lifecycle Information:

[HARTING:](#)

[09420200121](#)