



Pushing Performance  
Since 1945

# Han K 32-24-M-C

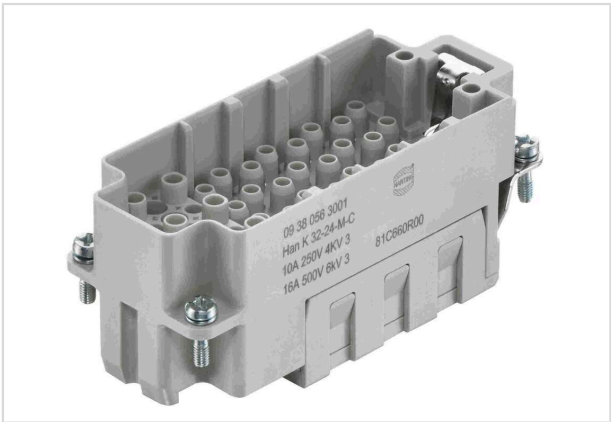


Image is for illustration purposes only. Please refer to product description.

Part number	09 38 056 3001
Specification	Han K 32-24-M-C
HARTING eCatalogue	<a href="https://b2b.harting.com/09380563001">https://b2b.harting.com/09380563001</a>

## Identification

Category	Inserts
Series	Han-Com®
Identification	Han® K 32/24

## Version

Termination method	Crimp termination
Gender	Male
Size	16 B
Number of contacts	56
Number of signal contacts	24
Number of power contacts	32
PE contact	Yes
Details	Please order crimp contacts separately.
	32x Han E®
	24x Han D®

## Technical characteristics

Conductor cross-section	0.14 ... 4 mm² Power
	0.14 ... 2.5 mm² Signal
Rated current (signal)	10 A
Rated voltage (signal)	250 V
Rated impulse voltage (signal)	4 kV
Pollution degree (signal)	3



**Pushing Performance**  
Since 1945

## Technical characteristics

Rated current (power)	16 A
Rated voltage (power)	500 V
Rated impulse voltage (power)	6 kV
Pollution degree (power)	3
Insulation resistance	$>10^{10} \Omega$
Limiting temperature	-40 ... +125 °C
Mating cycles	$\geq 500$

## Material properties

Material (insert)	Polycarbonate (PC)
Colour (insert)	RAL 7032 (pebble grey)
Material flammability class acc. to UL 94	V-0
RoHS	compliant
ELV status	compliant
China RoHS	e
REACH Annex XVII substances	Not contained
REACH ANNEX XIV substances	Not contained
REACH SVHC substances	Not contained
California Proposition 65 substances	Not contained

## Specifications and approvals

Specifications	IEC 60664-1 IEC 61984
Approvals	DNV GL

## Commercial data

Packaging size	1
Net weight	57.4 g
Country of origin	China
European customs tariff number	85366990
GTIN	5713140186477
ETIM	EC000438
eCl@ss	27440205 Contact insert for industrial connectors

# Mouser Electronics

Authorized Distributor

Click to View Pricing, Inventory, Delivery & Lifecycle Information:

[HARTING:](#)

[09380563001](#)