



Pushing Performance
Since 1945

Han K6/6-M-c

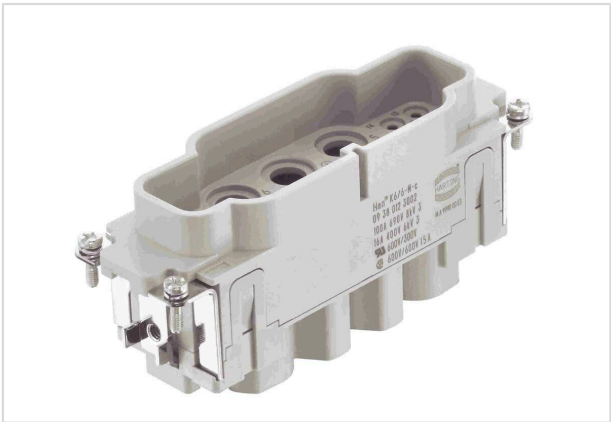


Image is for illustration purposes only. Please refer to product description.

Part number	09 38 012 3002
Specification	Han K6/6-M-c
HARTING eCatalogue	https://b2b.harting.com/09380123002

Identification

Category	Inserts
Series	Han-Com®
Identification	Han® K 6/6

Version

Termination method	Crimp termination
Gender	Male
Size	24 B
Number of contacts	12
Number of signal contacts	6
Number of power contacts	6
PE contact	Yes
Details	Please order crimp contacts separately. Please order coding pins separately.

Technical characteristics

Conductor cross-section	10 ... 25 mm² Power 0.14 ... 2.5 mm² Signal
Wire outer diameter	≤12.8 mm
Rated current	100 A
Rated voltage	690 V
Rated impulse voltage	8 kV
Pollution degree	3



Pushing Performance
Since 1945

Technical characteristics

Rated current (signal)	16 A
Rated voltage (signal)	400 V
Rated impulse voltage (signal)	6 kV
Pollution degree (signal)	3
Insulation resistance	$>10^{10} \Omega$
Limiting temperature	-40 ... +125 °C
Mating cycles	≥ 500

Material properties

Material (insert)	Polycarbonate (PC)
Colour (insert)	RAL 7032 (pebble grey)
Material flammability class acc. to UL 94	V-0
RoHS	compliant
ELV status	compliant
China RoHS	e
REACH Annex XVII substances	Not contained
REACH ANNEX XIV substances	Not contained
REACH SVHC substances	Not contained
California Proposition 65 substances	Not contained
Fire protection on railway vehicles	EN 45545-2 (2020-08)
Requirement set with Hazard Levels	R22 (HL 1-3) R23 (HL 1-3)

Specifications and approvals

Specifications	IEC 60664-1 IEC 61984
Approvals	DNV GL

Commercial data

Packaging size	1
Net weight	99.8 g
Country of origin	Romania
European customs tariff number	85366990
GTIN	5713140186439



Pushing Performance
Since 1945

Commercial data

ETIM	EC000438
eCI@ss	27440205 Contact insert for industrial connectors

Mouser Electronics

Authorized Distributor

Click to View Pricing, Inventory, Delivery & Lifecycle Information:

[HARTING:](#)

[09380123002](#) [9380123002](#)