

Han 10Ex-M-c

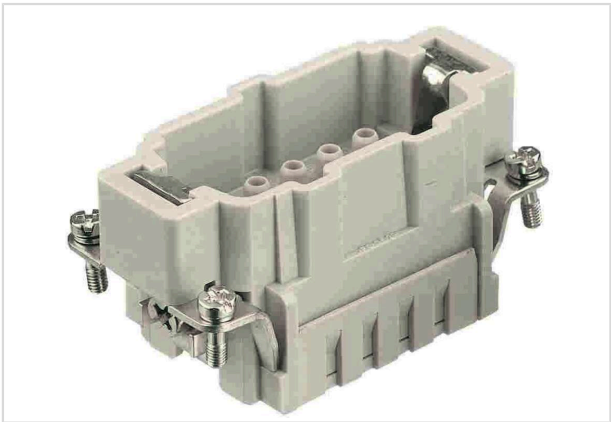


Image is for illustration purposes only. Please refer to product description.

| | |
|--------------------|---|
| Part number | 09 36 010 2602 |
| Specification | Han 10Ex-M-c |
| HARTING eCatalogue | https://b2b.harting.com/09360102602 |

Identification

| | |
|----------|---------------------|
| Category | Inserts |
| Series | Han [®] Ex |

Version

| | |
|--------------------|---|
| Termination method | Crimp termination |
| Gender | Male |
| Size | 10 B |
| Number of contacts | 10 |
| PE contact | Yes |
| Details | Please order crimp contacts separately. |
| Details | ATTENTION! Only to be used with Han [®] Ex hoods and housings! |

Technical characteristics

| | |
|-------------------------|----------------------------|
| Conductor cross-section | 0.14 ... 4 mm ² |
| Rated current | 16 A |
| Rated voltage | 90 V |
| Insulation resistance | >10 ¹⁰ Ω |
| Limiting temperature | -20 ... +40 °C |
| Mating cycles | ≥500 |

Material properties

| | |
|-------------------|------------------------|
| Material (insert) | Polycarbonate (PC) |
| Colour (insert) | RAL 7032 (pebble grey) |



Pushing Performance
Since 1945

Material properties

| | |
|---|------------------------------|
| Material flammability class acc. to UL 94 | V-0 |
| RoHS | compliant |
| ELV status | compliant |
| China RoHS | e |
| REACH Annex XVII substances | Not contained |
| REACH ANNEX XIV substances | Not contained |
| REACH SVHC substances | Not contained |
| California Proposition 65 substances | Yes |
| California Proposition 65 substances | Lead Nickel |
| Fire protection on railway vehicles | EN 45545-2 (2020-08) |
| Requirement set with Hazard Levels | R22 (HL 1-3) R23 (HL 1-3) |

Commercial data

| | |
|--------------------------------|---|
| Packaging size | 1 |
| Net weight | 47 g |
| Country of origin | Germany |
| European customs tariff number | 85366990 |
| GTIN | 5713140054882 |
| ETIM | EC000438 |
| eCl@ss | 27440205 Contact insert for industrial connectors |

Mouser Electronics

Authorized Distributor

Click to View Pricing, Inventory, Delivery & Lifecycle Information:

[HARTING:](#)

[09360102602](#) [9360102602](#)