



Pushing Performance
Since 1945

Han ES 16 Pos. F Insert Cage Clamp Term

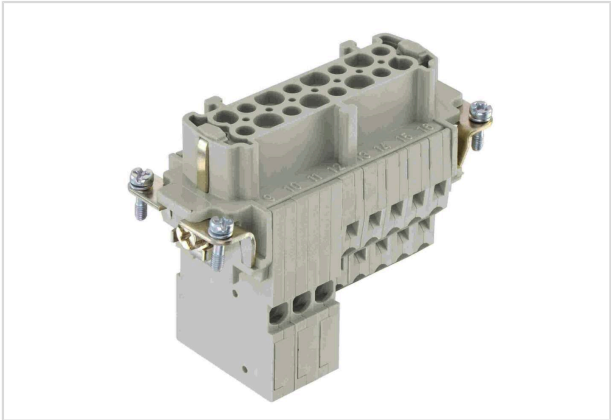


Image is for illustration purposes only. Please refer to product description.

Part number	09 33 016 2728
Specification	Han ES 16 Pos. F Insert Cage Clamp Term
HARTING eCatalogue	https://b2b.harting.com/09330162728

Identification

Category	Inserts
Series	Han [®] ES
Specification	With 2 relay contacts

Version

Termination method	Cage-clamp termination
Gender	Female
Size	16 B
Number of contacts	14
PE contact	Yes

Technical characteristics

Conductor cross-section	0.14 ... 2.5 mm ²
	0.5 ... 4 mm ² Relay contacts
Conductor cross-section	AWG 26 ... AWG 14
Rated current	16 A
Rated voltage	500 V
Rated impulse voltage	6 kV
Pollution degree	3
Rated voltage acc. to UL	600 V
Rated voltage acc. to CSA	600 V
Insulation resistance	>10 ¹⁰ Ω
Contact resistance	≤3 mΩ



Pushing Performance
Since 1945

Technical characteristics

Stripping length	7 ... 9 mm
Limiting temperature	-40 ... +125 °C
Mating cycles	≥500

Material properties

Material (insert)	Polycarbonate (PC)
Colour (insert)	RAL 7032 (pebble grey)
Material (contacts)	Copper alloy
Surface (contacts)	Silver plated
Material flammability class acc. to UL 94	V-0
RoHS	compliant with exemption
RoHS exemptions	6(c): Copper alloy containing up to 4 % lead by weight
ELV status	compliant with exemption
China RoHS	50
REACH Annex XVII substances	Not contained
REACH ANNEX XIV substances	Not contained
REACH SVHC substances	Yes
REACH SVHC substances	Lead
California Proposition 65 substances	Yes
California Proposition 65 substances	Lead
Fire protection on railway vehicles	EN 45545-2 (2020-08)
Requirement set with Hazard Levels	R22 (HL 1-3) R23 (HL 1-3)

Specifications and approvals

Specifications	IEC 60664-1 IEC 61984
UL / CSA	UL 1977 ECBT2.E235076
Approvals	DNV GL

Commercial data

Packaging size	1
Net weight	131.98 g
Country of origin	Romania
European customs tariff number	85366990



Pushing Performance
Since 1945

Commercial data

GTIN	5713140051546
ETIM	EC000438
eCl@ss	27440205 Contact insert for industrial connectors

Mouser Electronics

Authorized Distributor

Click to View Pricing, Inventory, Delivery & Lifecycle Information:

[HARTING:](#)

[09330162728](#)