

## Han 6 ES-M insert

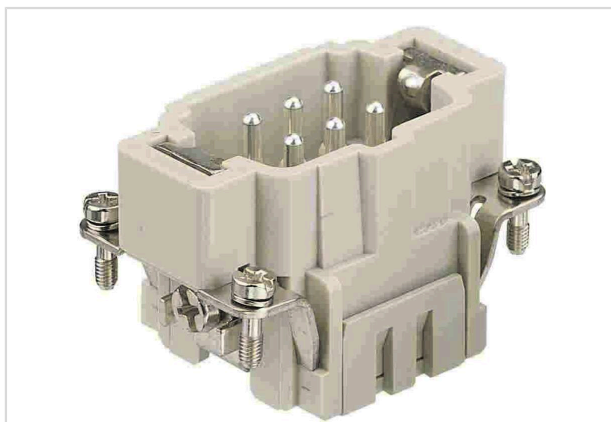


Image is for illustration purposes only. Please refer to product description.

|                    |   |
|--------------------|---|
| Part number        | 09 33 006 2616  |
| Specification      | Han 6 ES-M insert   |
| HARTING eCatalogue | <a href="https://b2b.harting.com/09330062616">https://b2b.harting.com/09330062616</a> |

### Identification

|          |         |
|----------|---------|
| Category | Inserts |
| Series   | Han® ES |

### Version

|                    |                        |
|--------------------|------------------------|
| Termination method | Cage-clamp termination |
| Gender             | Male                   |
| Size               | 6 B                    |
| Number of contacts | 6                      |
| PE contact         | Yes                    |

### Technical characteristics

|                           |                              |
|---------------------------|------------------------------|
| Conductor cross-section   | 0.14 ... 2.5 mm <sup>2</sup> |
| Conductor cross-section   | AWG 26 ... AWG 14            |
| Rated current             | 16 A                         |
| Rated voltage             | 500 V                        |
| Rated impulse voltage     | 6 kV                         |
| Pollution degree          | 3                            |
| Rated voltage acc. to UL  | 600 V                        |
| Rated voltage acc. to CSA | 600 V                        |
| Insulation resistance     | >10 <sup>10</sup> Ω          |
| Contact resistance        | ≤3 mΩ                        |
| Stripping length          | 7 ... 9 mm                   |
| Limiting temperature      | -40 ... +125 °C              |



**Pushing Performance**  
Since 1945

## Technical characteristics

|               |      |
|---------------|------|
| Mating cycles | ≥500 |
|---------------|------|

## Material properties

|   |   |
|---|---|
| Material (insert)                         | Polycarbonate (PC)  |
| Colour (insert)                           | RAL 7032 (pebble grey)  |
| Material (contacts)                       | Copper alloy  |
| Surface (contacts)                        | Silver plated   |
| Material flammability class acc. to UL 94 | V-0   |
| RoHS                                      | compliant with exemption  |
| RoHS exemptions                           | 6(c): Copper alloy containing up to 4 % lead by weight            |
| ELV status                                | compliant with exemption  |
| China RoHS                                | 50  |
| REACH Annex XVII substances               | Not contained   |
| REACH ANNEX XIV substances                | Not contained   |
| REACH SVHC substances                     | Yes   |
| REACH SVHC substances                     | Potassium 1,1,2,2,3,3,4,4,4-nonafluorobutane-1-sulphonate<br>Lead |
| ECHA SCIP number                          | 1e38d35d-d1be-4585-8e03-95faccd739bf                              |
| California Proposition 65 substances      | Yes   |
| California Proposition 65 substances      | Lead<br>Nickel  |
| Fire protection on railway vehicles       | EN 45545-2 (2020-08)  |
| Requirement set with Hazard Levels        | R22 (HL 1-3)<br>R23 (HL 1-3)                                      |

## Specifications and approvals

|                |   |
|----------------|---|
| Specifications | IEC 60664-1<br>IEC 61984  |
| UL / CSA       | UL 1977 ECBT2.E235076<br>UL 2237 PVVA2.E318390<br>CSA-C22.2 No. 182.3 PVVA8.E318390 |
| Approvals      | DNV GL  |

## Commercial data

|                |      |
|----------------|------|
| Packaging size | 1    |
| Net weight     | 49 g |



**Pushing Performance**  
Since 1945

Commercial data

|                                |   |
|--------------------------------|---|
| Country of origin              | Germany   |
| European customs tariff number | 85366990  |
| GTIN                           | 5713140050761                                     |
| ETIM                           | EC000438  |
| eCl@ss                         | 27440205 Contact insert for industrial connectors |

# Mouser Electronics

Authorized Distributor

Click to View Pricing, Inventory, Delivery & Lifecycle Information:

[HARTING:](#)

[09330062616](#)