



Pushing Performance
Since 1945

SEK 18 SV FE TYPA ANS 14P PL2

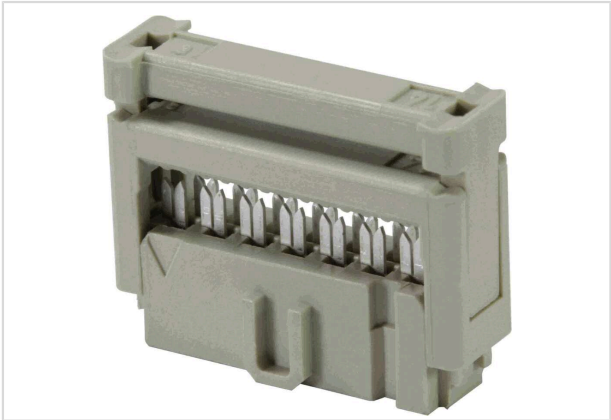


Image is for illustration purposes only. Please refer to product description.

| | |
|--------------------|---|
| Part number | 09 18 514 6804 |
| Specification | SEK 18 SV FE TYPA ANS 14P PL2 |
| HARTING eCatalogue | https://b2b.harting.com/09185146804 |

Identification

| | |
|---------------|------------------|
| Category | Connectors |
| Series | SEK |
| Element | Female connector |
| Specification | Closed end cover |

Version

| | |
|--------------------|--|
| Connection type | PCB to cable |
| Number of contacts | 14 |
| Details | for IDC flat cable 1.27 mm (0.050") pitch AWG 28/7 - AWG 26/7 |

Technical characteristics

| | |
|------------------------------------|---------------------------|
| Contact rows | 2 |
| Contact spacing (termination side) | 2.54 mm |
| Contact spacing (mating side) | 1.27 mm |
| Rated current | 2.5 A |
| Insulation resistance | $>10^9 \Omega$ |
| Contact resistance | $\leq 20 \text{ m}\Omega$ |
| Limiting temperature | -55 ... +125 °C |
| Insertion and withdrawal force | $\leq 28 \text{ N}$ |
| Performance level | 2 acc. to IEC 60603-13 |
| Mating cycles | ≥ 250 |



Pushing Performance
Since 1945

Technical characteristics

| | |
|---------------------------|-------------------------------|
| Test voltage $U_{r.m.s.}$ | 1 kV |
| Isolation group | IIIa ($175 \leq CTI < 400$) |

Material properties

| | |
|---|---|
| Material (insert) | Thermoplastic resin (PBT) |
| Colour (insert) | Grey |
| Material (contacts) | Copper alloy |
| Surface (contacts) | Au over Ni Mating side Sn over Ni Termination side |
| Material flammability class acc. to UL 94 | V-0 |
| RoHS | compliant |
| ELV status | compliant |
| China RoHS | e |
| REACH Annex XVII substances | Not contained |
| REACH ANNEX XIV substances | Not contained |
| REACH SVHC substances | Not contained |
| California Proposition 65 substances | Yes |
| California Proposition 65 substances | Antimony trioxide Nickel |
| Fire protection on railway vehicles | EN 45545-2 (2020-08) |
| Requirement set with Hazard Levels | R26 |

Specifications and approvals

| | |
|------------------------|--|
| Specifications | IEC 60603-13 |
| UL / CSA | UL 1977 ECBT2.E102079 CSA-C22.2 No. 182.3 ECBT8.E102079 |
| Railway classification | F3/I3 |

Commercial data

| | |
|--------------------------------|---------------|
| Packaging size | 100 |
| Net weight | 2.49 g |
| Country of origin | Romania |
| European customs tariff number | 85366990 |
| GTIN | 5713140027985 |
| ETIM | EC002637 |



Pushing Performance
Since 1945

Commercial data

eCl@ss

27460202 PCB connector (conductor connection)

Mouser Electronics

Authorized Distributor

Click to View Pricing, Inventory, Delivery & Lifecycle Information:

[HARTING:](#)

[09185146804](#)