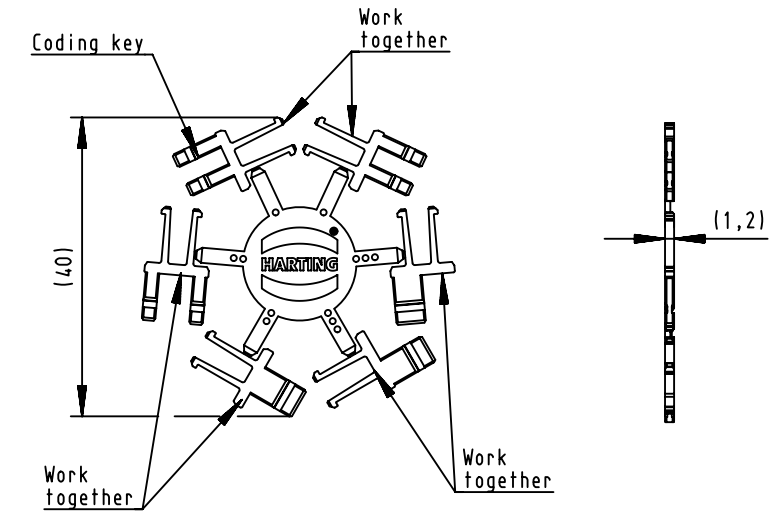
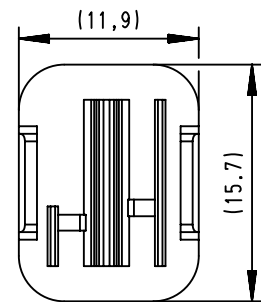
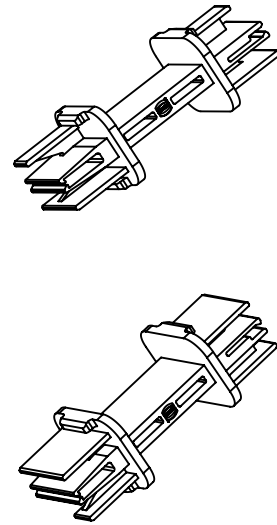
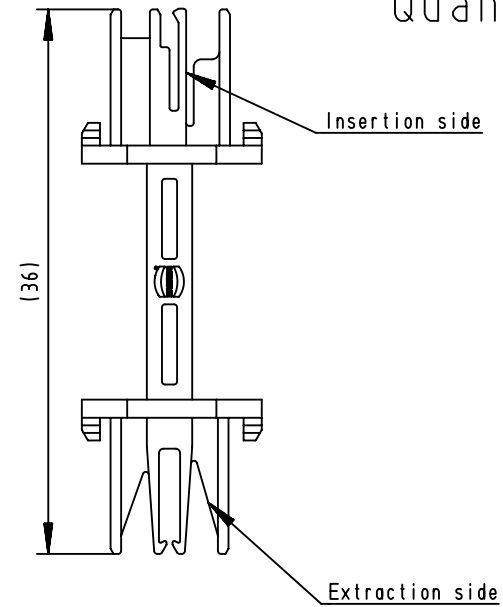


CODING KEY TOOL

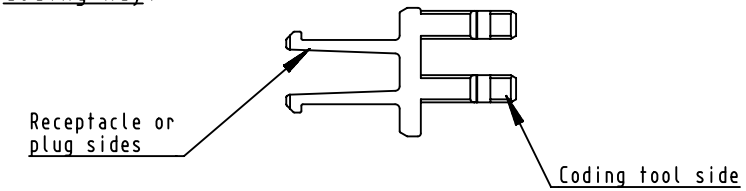
Quantity: 1

CODING KEY STARS

Quantity: 10



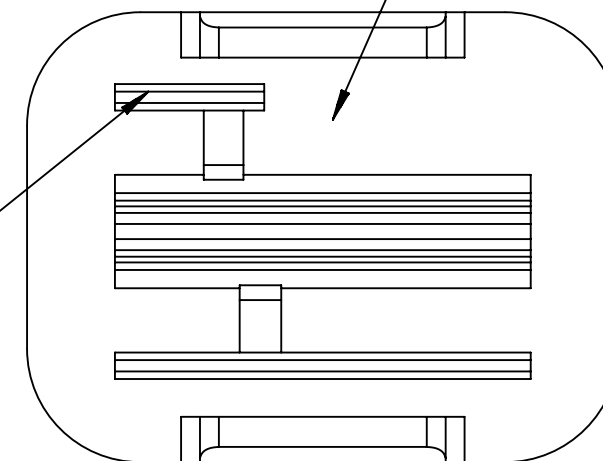
Coding key:



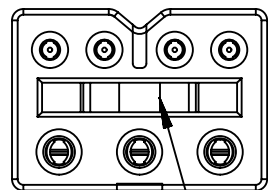
KEYING ON CODING KEY TOOL

Keying area: V shape of receptacle or plug shell MUST be on this coding key tool side

SMALL WALL

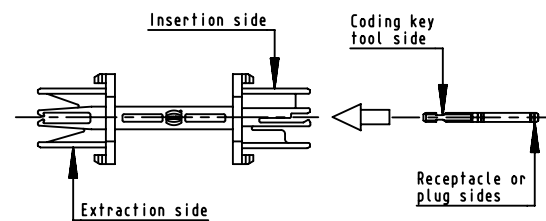
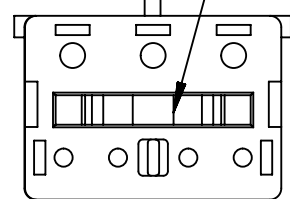


RECEPTACLE

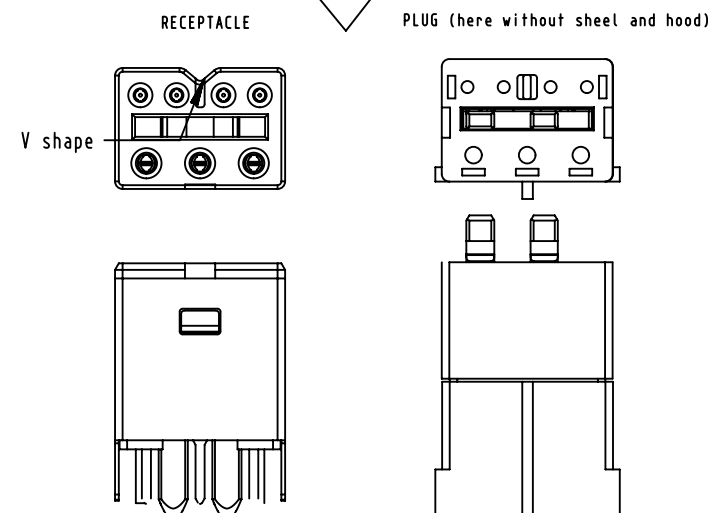


Areas for coding key

PLUG



For coding key insertion: coding key is inserted in tool insertion side
For coding key extraction: coding key is inserted in tool extraction side
Coding key is locked inside counterpart after hearing CLICK sound



Coating	A=	mm ²	V=	mm ²	m=	g	Mat.
	All Dimensions in mm	Scale	Free size tol.	Ref.			
	Original Size DIN A3	1:1		Sub.			
	All rights reserved	Created by	Inspected by	Standardisation	Date	State	
	Department EC PD - FR	BARLEMONT	DE VANSAY	HOFFMANN	2013-02-08	Final Release	
HARTING Electronics GmbH		Title HPP V4 Hybrid coding key set				Doc-Key / ECM-Nr.	
D-32339 Espelkamp		Type	Number			Rev.	Page
		TB	09458451300			C	1/1

Mouser Electronics

Authorized Distributor

Click to View Pricing, Inventory, Delivery & Lifecycle Information:

HARTING:

09458451300