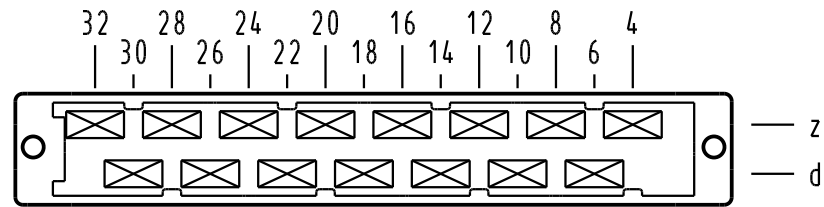


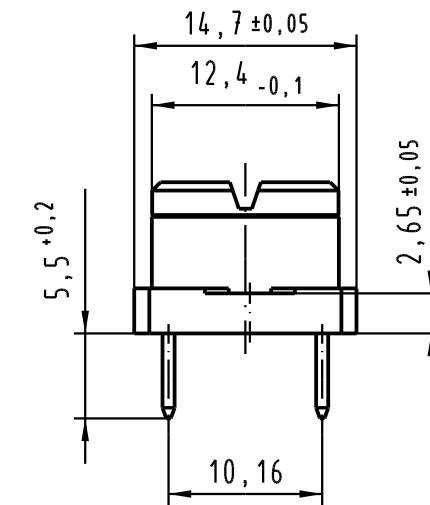
# X Kontaktanordnung/ contact arrangement



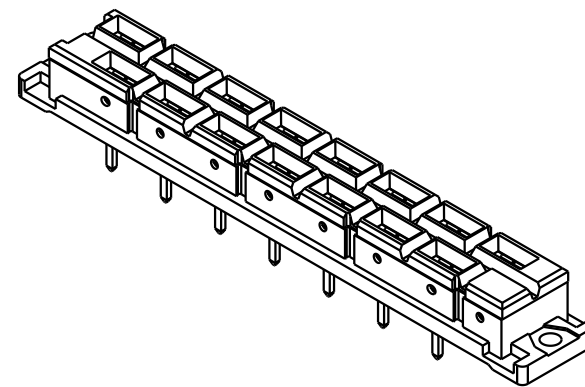
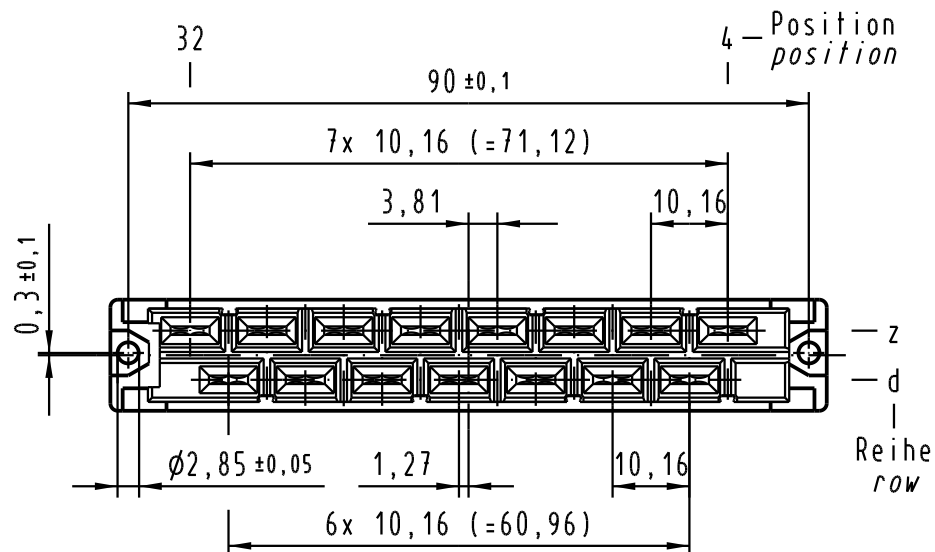
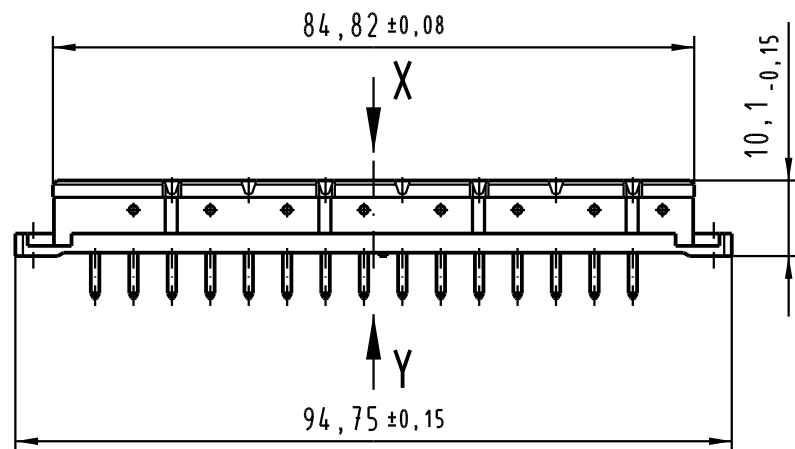
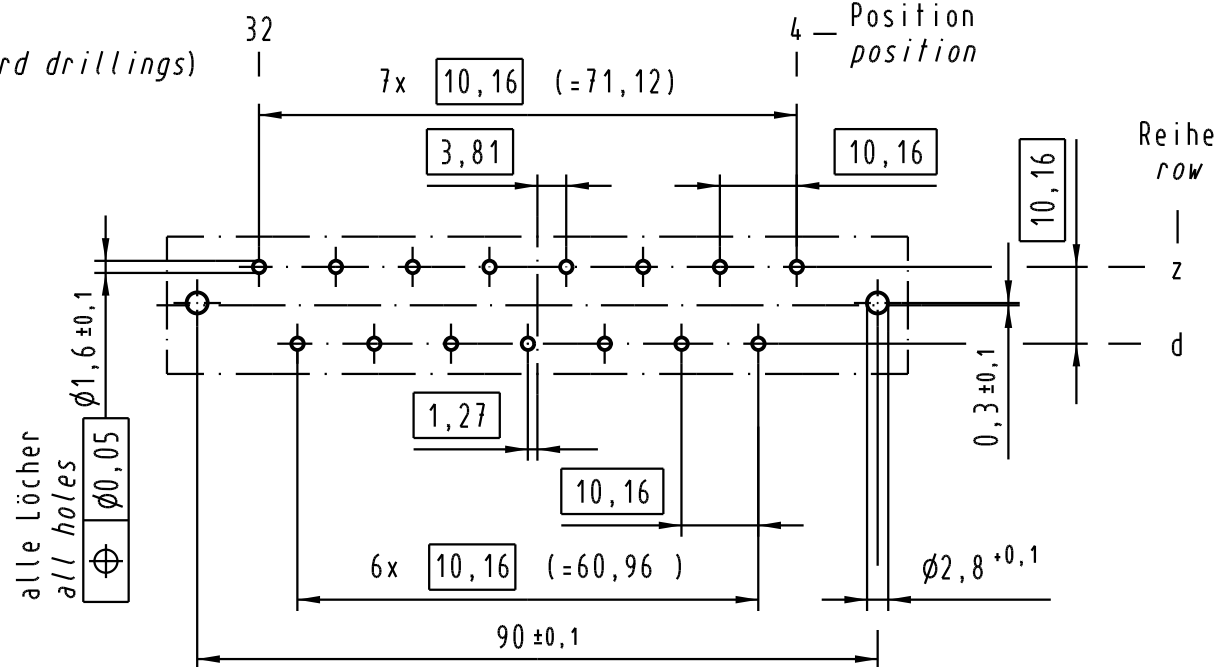
15 Kontakte  
15 contacts

- = Kontaktposition belegt  
= position with contact
- = Kontaktposition nicht belegt  
= position without contact

Z  
2:1



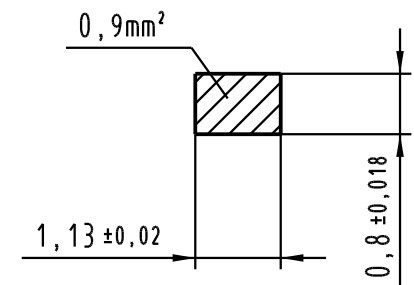
## X (Lochbild/board drillings)





Kontaktfläche Au über Ni  
contact plating Au over Ni

Y  
10:1

Querschnitt der Lötanschlüsse:  
cross-section of solder terminations:



 All Dimensions in mm Original Size DIN A 3			Techn. Character. IEC 60603-2			Nicht tolerierte Maß/Free size tolerances IEC 60603-2		
				Dat.	Name	Maßstab/Scale  1 : 1 2 : 1	Bauform/type H 15 low profile Federleiste Einlöt 5,5 female connector solder 5,5	
			Detail.	25.05.04	Leh.			
			Insp.	25.05.04	kfoe			
			Stand.					
32581	21.02.05	Leh.	HARTING Electronics GmbH & Co. KG				TB 09 06 215 2890	
32041			D-32339 ESPELKAMP					
Mod.	Dat.	Name					Blatt/ page /	
						Sub.		

# Mouser Electronics

Authorized Distributor

Click to View Pricing, Inventory, Delivery & Lifecycle Information:

HARTING:

9062152890