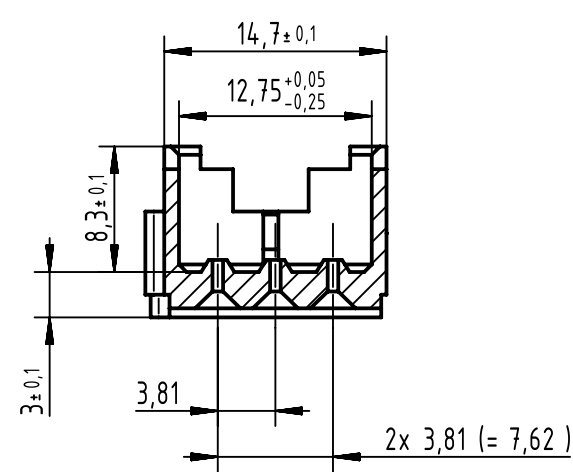
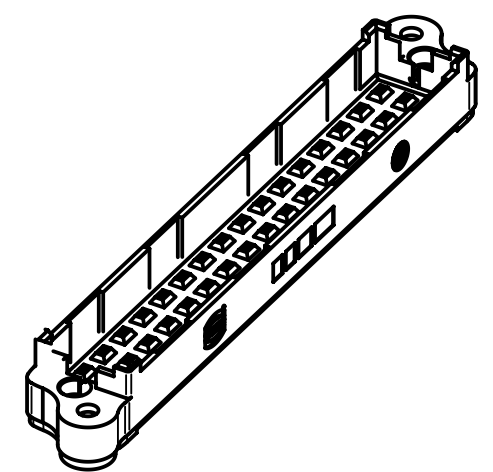
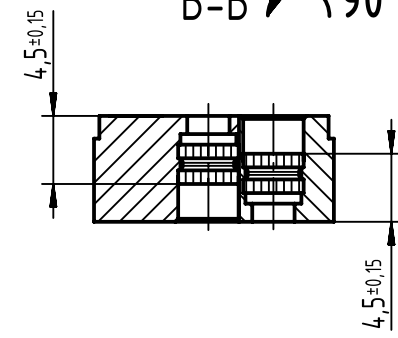


A-A (2:1) 90°





B-B 90°



min. clearance and creepage

	clearance in mm	creepage in mm
contact-contact	3.0	3.1
contact-ground	3.7	3.5

09060029921		3.2-4.0		13mm± 0.1		0		without standoff, with insert nuts							
09060029922		1.6-2.4		13mm± 0.1		1.6		with standoff 1.6mm, with insert nuts							
number		PCB t± 10%		contact length		a± 0.1		remarks							
		All Dimensions in mm Original Size DIN A3		Scale 1:1		Free size tol.		Ref.							
								Sub. TB 0906002992X / 500000058389 / 2014-08-13							
		All rights reserved		Created by EIMERTENBRIN		Inspected by TADJE		Standardisation KOHLER		Date 2018-08-01		State Final Release			
		Department EL PD		Title DIN Power type F - shroud with insert nuts								Doc-Key / ECM-Nr. 100516237/UGD/001/B 500000075686			
HARTING Electronics GmbH D-32339 Espelkamp				Type TB		Number 0906002992X						Rev. B		Page 1/1	

Mouser Electronics

Authorized Distributor

Click to View Pricing, Inventory, Delivery & Lifecycle Information:

HARTING:

[09060029922](#) [09060029921](#)