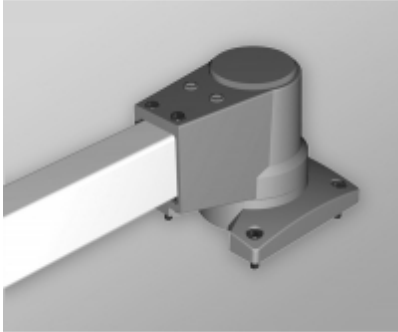




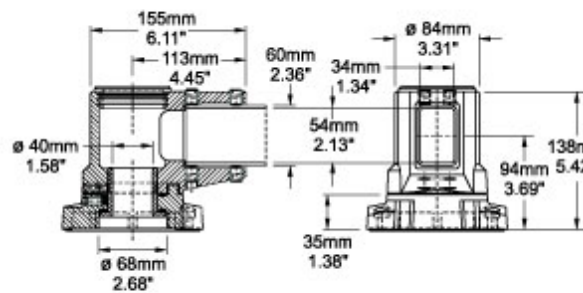
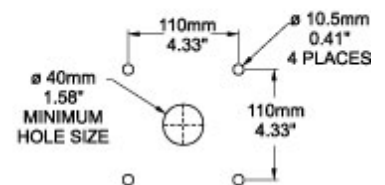
Quality Products. Service Excellence.

Tara Plus Socket Joint TPSSSJ Series



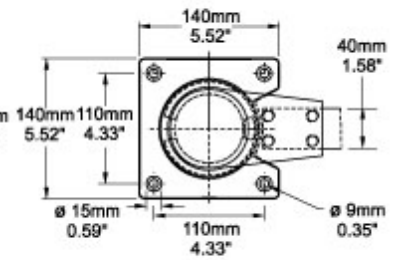
- Accepts 60x40mm rectangular tube parallel to its mounting surface.
- Die-cast Aluminum G Al Si 12.
- Integrated movement stop.
- Service free bearings.
- Rotates 300°.
- Adjustment screws (red screws).
- Accessible from the top.

Hole Pattern



Front Section Socket Joint

End View



TopView

Part No. R149-005-000

Tags: TPSS, tara plus, taraplus, suspension system, socket, joint, rectangular, operator

Data subject to change without notice

© 2025. Hammond Manufacturing Ltd. All rights reserved.

Mouser Electronics

Authorized Distributor

Click to View Pricing, Inventory, Delivery & Lifecycle Information:

[Hammond:](#)

[R149-005-000](#)