

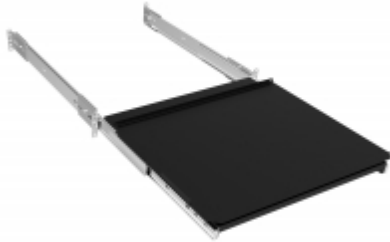


*Quality Products. Service Excellence.*

## Rotating Equipment Slide-out Base *RSKS Series*

Load rated to 129 lbs (59 kg)

### Features



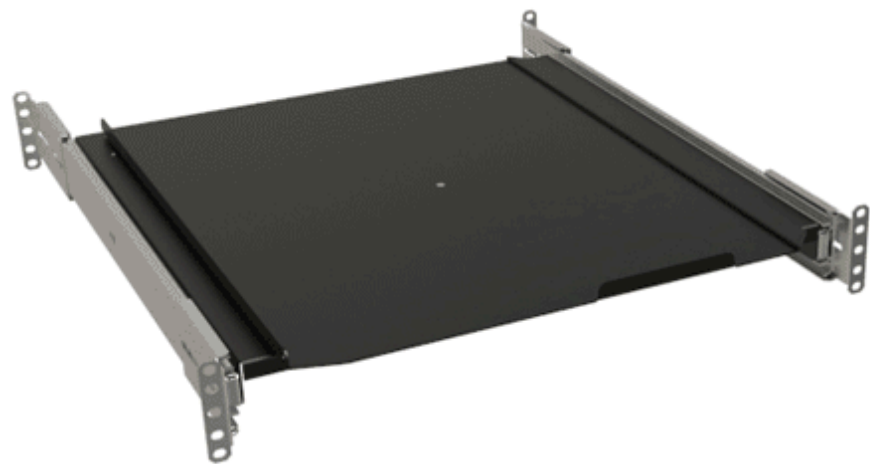
- Standard 19" rack mount
- Supplied as shown complete with two slides and mounting hardware
- Mounts to front & rear panel rails of racks
- Accommodates front rail to rear rail spacing from 19.8" to a maximum of 34.8" deep
- Unique design allows the use of a full-size keyboard or other equipment (not included) housed in the rack shelf.
- The top tray of the drawer swivels clockwise 90 degrees, once pulled outside the front of the rack.
- Optional front locking door adds security where required.
- 129 lbs (59 kg) **load rating**.
  - Slides are tested to BIFMA Standards with load capacity @ 12 times/minute for 55000 cycles minimum.
- Finished in textured RAL9005 black powder coat. Complies with the Greenguard guidelines for indoor air quality.
- TAA-compliant for GSA Schedule purchases.
- RoHS and REACH compliant.
- Manufactured in North America.

### Gallery



### Accessories

- Hardware for Rack Mounting Solutions
- Chassis Sliding Rack Rail Kit
- Rack Equipment Installation Tool
- Rack Shelf Slide Block
- Extender Bracket for Sliding Shelves



Part No.	Height	Mounting Dimensions	
		Rack Units	Depth
RSKS19005BK1	5.25	3U	15.00
RSKS19DOORBK1	3U Hinged Locking Door for RSKS Keyboard Drawer		

NOTE: Will NOT work in our 17" deep racks (as slides are too deep).

*Data subject to change without notice*

© 2025. Hammond Manufacturing Ltd. All rights reserved.

# Mouser Electronics

Authorized Distributor

Click to View Pricing, Inventory, Delivery & Lifecycle Information:

[Hammond:](#)

[RSKS19DOORBK1](#) [RSKS19005BK1](#)