



Quality Products. Service Excellence.

ABS Plastic Project Enclosures *RL Series*

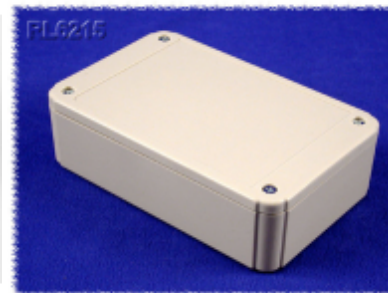
Shallow Lid

Key Features:

- Designed to house P.C. boards for hand-held use or wall mount.
- Molded in light grey or black general purpose ABS plastic with a light texture.
- Two part construction. Both halves include smooth recessed area for membrane, label or silkscreen (see chart below for recess size).
- P.C. board standoffs are molded into both halves of the enclosure (see photo tables for details).
- Designed to meet IP54.
- All sizes also available in a flanged lid version.
- Enclosures include lid screws and PCB screws. For corresponding packs of replacement screws, see part drawings below.



Photos:



Available in black or gray, and with or without mounting flanges. Includes lid and PC board screws.

Enclosures (No Wall Mounting Flanges)

Black Enclosure	Gray Enclosure	Length (mm)	Width (mm)	Height (mm)	Max PCB Length (mm)	Max PCB Width (mm)
RL6105BK	RL6105	80	60	30	74.43	54.43
RL6115BK	RL6115	80	60	40	73.91	53.91
RL6165BK	RL6165	105	65	30	99.43	59.43
RL6175BK	RL6175	105	65	40	98.91	58.91
RL6205BK	RL6205	125	80	25	119.31	74.31
RL6215BK	RL6215	125	80	35	118.84	73.84
RL6225BK	RL6225	125	80	50	118.05	73.05
RL6335BK	RL6335	125	100	60	117.53	92.53
RL6365BK	RL6365	125	100	90	115.96	85.26
RL6435BK	RL6435	150	100	60	142.53	87.35
RL6465BK	RL6465	150	100	90	140.96	87.35
RL6555BK	RL6555	175	125	70	166.03	109.35
RL6585BK	RL6585	175	125	100	164.46	109.35

Black	Gray				Max PCB	Max PCB
Enclosure	Enclosure	Length (mm)	Width (mm)	Height (mm)	Length (mm)	Width (mm)
RL6655BK	RL6655	200	150	70	191.03	133.35
RL6685BK	RL6685	200	150	100	189.46	133.35

Enclosures with Wall Mounting Flanges

Black	Gray				Max PCB	Max PCB
Enclosure	Enclosure	Length (mm)	Width (mm)	Height (mm)	Length (mm)	Width (mm)
RL6105-FBK	RL6105-F	80	60	30	74.43	54.43
RL6115-FBK	RL6115-F	80	60	40	73.91	53.91
RL6165-FBK	RL6165-F	105	65	30	99.43	59.43
RL6175-FBK	RL6175-F	105	65	40	98.91	58.91
RL6205-FBK	RL6205-F	125	80	25	119.31	74.31
RL6215-FBK	RL6215-F	125	80	35	118.84	73.84
RL6225-FBK	RL6225-F	125	80	50	118.05	73.05
RL6335-FBK	RL6335-F	125	100	60	117.53	92.53
RL6365-FBK	RL6365-F	125	100	90	115.96	85.26
RL6435-FBK	RL6435-F	150	100	60	142.53	87.35
RL6465-FBK	RL6465-F	150	100	90	140.96	87.35
RL6555-FBK	RL6555-F	175	125	70	166.03	109.35
RL6585-FBK	RL6585-F	175	125	100	164.46	109.35
RL6655-FBK	RL6655-F	200	150	70	191.03	133.35
RL6685-FBK	RL6685-F	200	150	100	189.46	133.35

Tags: shallow lid, ABS, plastic, PCB, board, black, flanged, project box

Data subject to change without notice

Mouser Electronics

Authorized Distributor

Click to View Pricing, Inventory, Delivery & Lifecycle Information:

[Hammond:](#)

[RL6555-F](#) [RL6215](#) [RL6465-F](#) [RL6655-F](#) [RL6225](#) [RL6335](#) [RL6555](#) [RL6115-F](#) [RL6435](#) [RL6685](#) [RL6105-F](#)
[RL6365-F](#) [RL6685-F](#) [RL6115](#) [RL6435-F](#) [RL6655](#) [RL6585-F](#) [RL6225-F](#) [RL6585](#) [RL6465](#) [RL6365](#) [RL6105](#)
[RL6215-F](#) [RL6335-F](#) [RL6165-F](#) [RL6175-F](#) [RL6215BK](#) [RL6105BK](#) [RL6685-FBK](#) [RL6175-FBK](#) [RL6335-FBK](#)
[RL6585-FBK](#) [RL6225BK](#) [RL6115BK](#) [RL6205](#) [RL6215-FBK](#) [RL6165-FBK](#) [RL6555BK](#) [RL6115-FBK](#) [RL6465BK](#)
[RL6655-FBK](#) [RL6435-FBK](#) [RL6365-FBK](#) [RL6335BK](#) [RL6685BK](#) [RL6175BK](#) [RL6025-F](#) [RL6205-FBK](#) [RL6165](#)
[RL6465-FBK](#) [RL6585BK](#) [RL6655BK](#) [RL6555-FBK](#) [RL6105-FBK](#) [RL6365BK](#) [RL6205BK](#) [RL6225-FBK](#) [RL6175](#)
[RL6435BK](#) [RL6165BK](#) [C13727M](#)