



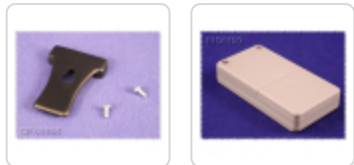
Quality Products. Service Excellence.

ABS Plastic Hand Held Enclosures RH Series

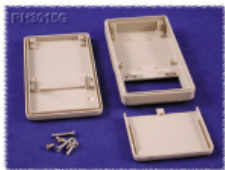
Battery Door

Key Features:

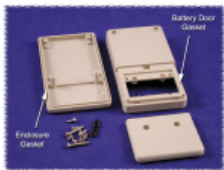
- Electronic hand-held enclosures ideally suited for mounting printed circuit boards.
- Ergonomically designed for a comfortable fit into the user's hand.
- Lap joint construction provides protection against dust accumulation and splashing water.
- Available with or without a gasket. Gasketed versions are rated IP65.
- Gasketed version includes a factory-installed gasket around top and bottom half and around battery door.
- Molded in a general purpose ABS plastic which carries a UL flammability rating of UL94 HB.
- The top half includes a smooth recessed area for membranes, keypads, labels, and more.
- Assembled with M3 Philips self-tapping screws.
- Both top and bottom halves contain molded PC board standoffs.



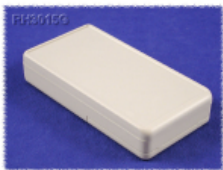
Photos:



Standard version



Gasketed version



Assembled

Belt Clips:



- Choice of either black or grey color
- Made from tough nylon material
- Includes mounting hardware

Black Enclosure	Gray Enclosure	Gasket	Length (mm)	Width (mm)	Height (mm)
RH3011BK	RH3015	no	130	67.5	25
RH3001BK	RH3005	yes	130	67.5	25
RH3051BK	RH3055	no	160	85	30

Belt Clips

Black	Gray
CP-001BK	CP-001G

Black Enclosure	Gray Enclosure	Gasket	Length (mm)	Width (mm)	Height (mm)
RH3045BK	RH3045	yes	160	85	31

Tags: **battery door, gasket, handheld, PCB, board, belt clip**

Data subject to change without notice

© 2024. Hammond Manufacturing Ltd. All rights reserved.

Mouser Electronics

Authorized Distributor

Click to View Pricing, Inventory, Delivery & Lifecycle Information:

[Hammond:](#)

[RH3001BK](#) [RH3015](#) [RH3055](#) [RH3045](#) [RH3005](#) [RH3041BK](#) [RH3051BK](#) [RH3011BK](#) [CP-001BK](#) [CP-001G](#)
[RH3045BK](#)