



Quality Products. Service Excellence.

Horizontal Finger Cable Manager *RB-HFMD Series*

Features



- Metal components constructed in 16-gauge steel.
- Fingers constructed in black plastic.
- Snap-on, hinged door.
- Includes cutouts at rear for cable pass-through.
- EIA compliant.
- Metal components finished in textured RAL9005 black powder paint.
- Requires mounting hardware.
- TAA-compliant for GSA Schedule purchases.
- RoHS Compliant.
- Manufactured in North America.

RACK BASICS®



For a doubled-sided manager, install two (2) managers mounted back-to-back. The rear opening provides a cable pass-thru.

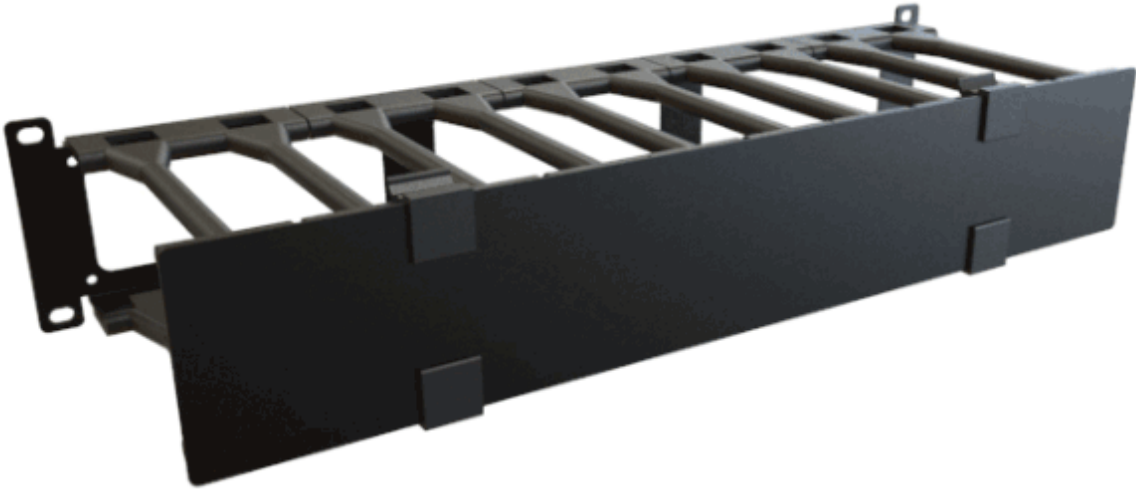
Part of the Rack Basics® line of economy rack solutions.

Gallery



Accessories

- Mounting Hardware
- Hook and Loop Roll



Part No.	Overall Dinmensions			Usable Mounting Dimensions	
	Height	Width	Depth	Rack Units	Height
RB-HFMD1	1.47	19.00	6.50	1U	1.75
RB-HFMD2	3.22	19.00	6.50	2U	3.50
RB-HFMD3	5.22	19.00	6.50	3U	5.25
RB-HFMD4	6.97	19.00	6.50	4U	7.00

Estimated Cable Fill Capacities

Rack Units	Description	Recommended Cable Fill (50% Fill Ratio)		Maximum Cable Fill (100% Fill Ratio)	
		Cat 6	Cat 6a	Cat 6	Cat 6a
RB-HFMD1	Channel Opening	31	21	61	42
	Finger Opening	32	22	64	45
	Rear Pass Through	19	13	39	27
RB-HFMD2	Channel Opening	89	62	177	123
	Finger Opening	32	22	64	45
	Rear Pass Through	47	33	94	65
RB-HFMD3	Channel Opening	138	96	276	192
	Finger Opening	32	22	64	45
	Rear Pass Through	92	64	183	127
RB-HFMD4	Channel Opening	204	142	408	284
	Finger Opening	32	22	64	45
	Rear Pass Through	92	64	183	127

Data subject to change without notice

Mouser Electronics

Authorized Distributor

Click to View Pricing, Inventory, Delivery & Lifecycle Information:

Hammond:

[RB-HFMD4](#) [RB-HFMD3](#) [RB-HFMD2](#) [RB-HFMD1](#)