



Quality Products. Service Excellence.

Economy Fixed Wall Mount Cabinet *RB-FW Series*

Load rated to 130 lbs (59 kg)

Features:



- Constructed in light-duty 16-gauge steel.
- Includes two (2) pairs of EIA compliant 19-inch square hole mounting rails.
 - Starter pack of (25) M6 screws, cage nuts and washers included.
 - For 10-32 hardware, please see our **CAGKIT Series**.
- Rails are adjustable.
- Includes one (1) locking tempered glass lightly smoked reversible front door.
- Includes one (1) pair of locking removable side panels.
- The front and side of the frame include venting for airflow.
- Rear cable access.
- Provision for optional fans on the top panel.
- Ships unassembled - some assembly is required.
- Meets PCI DSS (Payment Card Industry Data Security Standard) compliance requirements.
- Finished in black powder paint.
- 130 lbs (59 kg) of equipment load capacity.
- RoHS Compliant.

RACK BASICS®

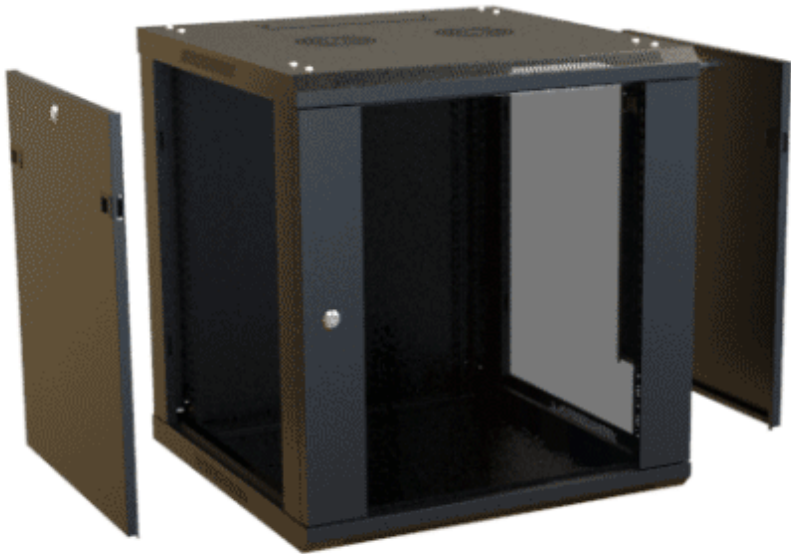
A HAMMOND BRAND

Part of the Rack Basics® line of value rack solutions.

Accessories

- Horizontal Ring Cable Manager
- Cable Lacing Bar
- Heavy Duty Cooling Fan Kits
- PDUs and Outlet Strips
- Horizontal Lacing Strip
- Universal Rack Shelf
- Hardware for Rack Mounting Solutions





Part No.	Overall Dimensions			Rack Units	Mounting Dimensions		
	Height	Width	Depth		Height	Width	Depth
RB-FW6	14.65	23.62	23.62	6U	10.50	19.00	21.24
RB-FW9	19.90	23.62	23.62	9U	15.75	19.00	21.24
RB-FW12	25.15	23.62	23.62	12U	21.00	19.00	21.24
RB-FW15	30.40	23.62	23.62	15U	26.25	19.00	21.24

Mounting Dimensions / Usable Depth is the maximum allowable equipment depth.

Tags: **knock-down, knock down**

Data subject to change without notice

© 2025. Hammond Manufacturing Ltd. All rights reserved.

Mouser Electronics

Authorized Distributor

Click to View Pricing, Inventory, Delivery & Lifecycle Information:

[Hammond:](#)

[RB-FW6](#) [RB-FW15](#) [RB-FW12](#) [RB-FW9](#)