

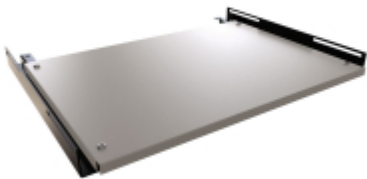


Quality Products. Service Excellence.

# Four Post Mounting Fixed Chassis Shelf *RASC Series*

Load rated to 85 lbs (39 kg)

## Features

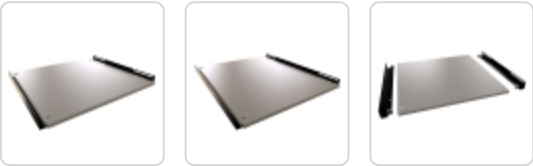


- Constructed of 18-gauge steel (shelf) and 14-gauge (brackets).
- The shelf can be used as a permanently mounted support shelf or as a pull-out chassis.
- Will also accept type **RSLIDE** equipment rail slides for pull-out applications.
- Includes all mounting hardware.
- 85 lbs (39 kg) **load rating**.
- Finished in a smooth white powder coat. Complies with the Greenguard guidelines for indoor air quality.
- TAA-compliant for GSA Schedule purchases.
- RoHS and REACH compliant.
- Manufactured in North America.



Please note that to mount this product, you must have two (2) pairs of combination rails within your cabinet. To mount this product to a traditional equipment rack, please order the FSRA or see our RAAB Series.

## Gallery



## Accessories

- Chassis Sliding Rack Rail Kit
  - Fixed Shelf Rail Adapter
- Extender Bracket for Sliding Shelves
  - Hardware for Rack Mounting Solutions

Part No.	Overall Dimensions			Shelf Dimensions		
	Height	Width	Depth	Height	Width	Depth
RASC1912WH2	1.32	17.85	13.74	0.50	16.65	12.00
RASC1916WH2	1.32	17.85	16.00	0.50	16.65	16.00
RASC1922WH2	1.32	17.85	22.00	0.50	16.65	22.00

Data subject to change without notice



# Mouser Electronics

Authorized Distributor

Click to View Pricing, Inventory, Delivery & Lifecycle Information:

[Hammond:](#)

[RASC1912WH2](#) [RASC1916WH2](#) [RASC1922WH2](#)