
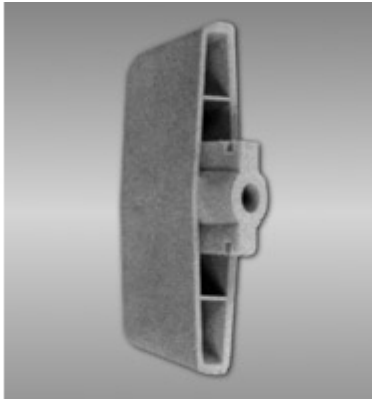




*Quality Products. Service Excellence.*

## PW Series Moulded Double Bar Enclosure Key *PWKEY Series*

 **Note:** This product line has been discontinued as a stocked series. Information is for reference only. For alternative solution assistance, please **contact Hammond here** or call: USA (716) 630-7030, Canada and International (519) 822-2960.



- PW Enclosures use a standard double bar key. One is shipped with the enclosure, however in the instance you lose the key, or would like backup, they are available for order.
- Molded key fits all sizes of PW Enclosures.
- Packaged individually.

Part No.	PWKEY
----------	-------

*Data subject to change without notice*



© 2025. Hammond Manufacturing Ltd. All rights reserved.

# Mouser Electronics

Authorized Distributor

Click to View Pricing, Inventory, Delivery & Lifecycle Information:

[Hammond:](#)

[PWKEY](#)