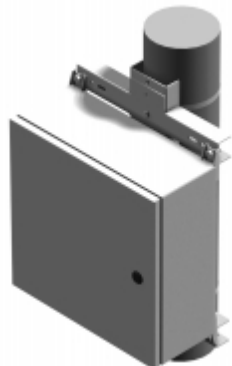




Quality Products. Service Excellence.

Pole Mounting Kit *PMK Series*

Junction and Wallmount Style - Steel



Features

- Designed to mount outdoor rated enclosures - Hammond **1414N4**, Eclipse, **Eclipse Junior**, **HWHK**, and **1418N4**.
- Individual components allow users to choose the mounting configuration and/or components to purchase
 - Note: Eclipse Series enclosures require the use of an external **Eclipse Mounting Foot Kit** (sold separately)
- This pole mount kit is a 2 or 3-part system.

Choose Vertical Channel:

- The vertical channel can be lagged directly to a pole or attached using optional stainless steel straps
- A vertical channel prevents the enclosure from twisting. Can be used on pole diameters from 4" and up

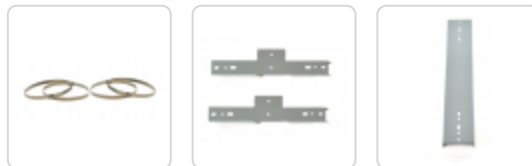
Choose Horizontal Channel:

- Horizontal steel channels (sold in pairs) come with all hardware needed to secure the enclosure

Choose Straps (Optional):

- Stainless steel straps are sold separately in quantities of four (4)
 - **PMSTRAP40** straps are rated for 450 lbs each and can be used for pole diameters up to 10"
 - **PMSTRAP55** straps are rated for 250 lbs each and can be used for pole diameters up to 15"

Gallery



Vertical Channel

Part No.	Description	Use with Hammond Series			
		1414N4	Eclipse Junior (EJ)	1418N4/HWHK	Eclipse (EN4SD)
PMV1216GY	Qty 1 - Vertical Steel Channel	12"-16" encl height	12"-16" encl height	12"-16" encl height	12"-16" encl height
PMV2024GY	Qty 1 - Vertical Steel Channel	-	-	20"-24" encl height	20"-24" encl height
PMV3036GY	Qty 1 - Vertical Steel Channel	-	-	30"-36" encl height	30"-36" encl height
PMV4248GY	Qty 1 - Vertical Steel Channel	-	-	42"-48" encl height	42"-48" encl height

Horizontal Channel

Part No.	Description	Use with Hammond Series			
		1414N4	Eclipse Junior (EJ)	1418N4/HWHK	Eclipse (EN4SD)
PMH15GY	Qty 2 - Horizontal Steel Channel	12"-16" encl width	12"-16" encl width	12"-20" encl width	12"-16" encl width
PMH25GY	Qty 2 - Horizontal Steel Channel	-	-	24"-30" encl width	20"-24" encl width
PMH35GY	Qty 2 - Horizontal Steel Channel	-	-	36" encl width	30"-36" encl width

Stainless Steel Straps

Part No.	Description
PMSTRAP40	Qty 4 - 0.50" x 39" length 316 stainless strap, supports up to 450 lbs, pole diameters up to 10"
PMSTRAP55	Qty 4 - 0.31" x 55" length 316 stainless strap, supports up to 250 lbs, pole diameters up to 15"

Tags: **stainless steel, steel strap, pole strap, pole mounting, vertical channel, horizontal channel, eclipse, EJ, 1418N4, HWNK, 1414N4**

Data subject to change without notice

© 2025. Hammond Manufacturing Ltd. All rights reserved.

Mouser Electronics

Authorized Distributor

Click to View Pricing, Inventory, Delivery & Lifecycle Information:

[Hammond:](#)

[PMV4248GY](#) [PMV2024GY](#) [PMH25GY](#) [PMV1216GY](#) [PMV3036GY](#) [PMH15GY](#) [PMSTRAP55](#) [PMSTRAP40](#)
[PMH35GY](#)