



Quality Products. Service Excellence.

Horizontal Hinged Cable Manager *PCMDD Series*

Features:

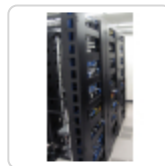


- Constructed in 16-gauge steel.
- Continuous hinged door with magnetic closure strip.
- Four oblong openings (3.5" x 1.56") top & bottom - allowing for cable exit top and/or bottom.
- Openings in the rear for cable entry.
- Designed to fit standard 19" rails.
- Requires mounting hardware.
- Finished in textured RAL9005 black powder paint finish.
- TAA-compliant for GSA Schedule purchases.
- RoHS and REACH compliant.
- Manufactured in North America.



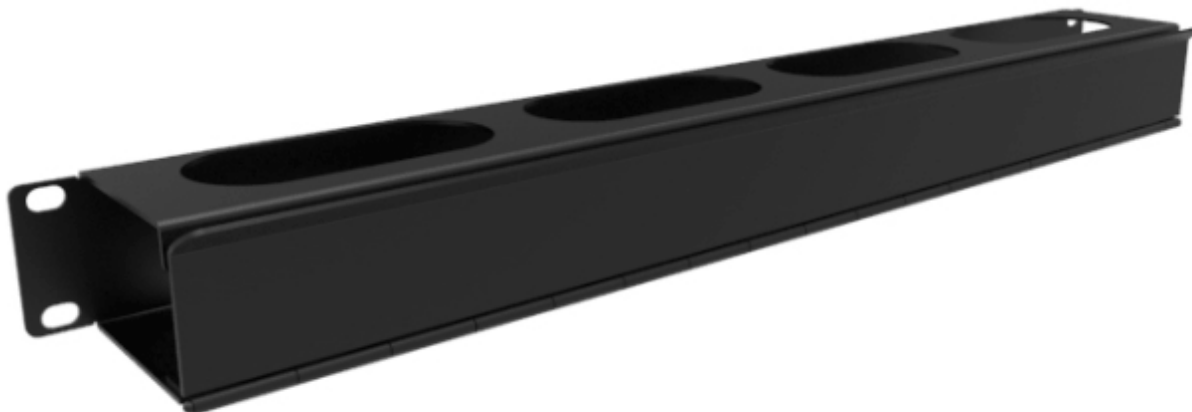
Looking for 4U managers? Check out our RB-HFMD Series of Hinged Horizontal Managers

Gallery



Accessories

- Hardware for Rack Mounting Solutions



Part No.	Overall Dimensions			Rack	Usable Dimensions			Similar Size
	Height	Width	Depth	Units	Height	Width	Depth	Part No.
PCMDD19001BK1	1.72	19.00	2.71	1U	1.25	17.62	2.50	RB-HFMS1
PCMDD19003BK1	3.47	19.00	2.71	2U	3.00	17.62	2.50	RB-HFMS2
PCMDD19005BK1	5.22	19.00	2.71	3U	4.75	17.62	2.50	RB-HFMD3

Estimated Cable Fill Capacities

Rack Units	Description	Opening	Recommended Cable Fill (40% Fill Ratio)		Maximum Cable Fill (100% Fill Ratio)	
		Quantity	Cat 6a		Cat 6a	
1U	Channel Opening	1	12		30	
	Top/Bottom Opening	2 x 4 = 8	15		38	
	Rear Pass Through	0	n/a		n/a	
2U	Channel Opening	1	24		61	
	Top/Bottom Opening	2 x 4 = 8	15		38	
	Rear Pass Through	4	11		28	
3U	Channel Opening	1	37		92	
	Top/Bottom Opening	2 x 4 = 8	15		38	
	Rear Pass Through	4	11		28	

Cable fill capacity will vary based on the cable manufacturer.

Data subject to change without notice

Mouser Electronics

Authorized Distributor

Click to View Pricing, Inventory, Delivery & Lifecycle Information:

[Hammond:](#)

[PCMDD19001BK1](#) [PCMDD19005BK1](#) [PCMDD19003BK1](#)