



Quality Products. Service Excellence.

Bench Case Enclosures 1210 Series

Flame Retardant ABS w/ Aluminum Panel

Note: This product line has been discontinued as a stocked series. Information is for reference only. For alternative solution assistance, please **contact Hammond here** or call: USA (716) 630-7030, Canada and International (519) 822-2960.

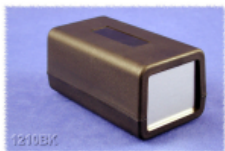
Key Features:



- The Bench Case is a British-designed plastic enclosure.
- Ideally suited for mounting printed circuit boards for use in bench top applications.
- Molded in a choice of black (RAL 9005) or grey (RAL 9018) - flame retardant ABS plastic.
- Satin texture finish.
- Complete with plastic top & bottom, removable aluminum front panel, four rubber self adhesive feet and four self tapping screws.
- The top panel & bottom halves include a flat display area, perfect for labels or silk screening..
- The base is molded with six bosses for easy P.C. board mounting (see drawings for locations and PC board size).
- The removable 1.5mm thick aluminum end panel is securely clamped by the two box halves and easily customized.
- Hole in rear of enclosure for easy cord access.



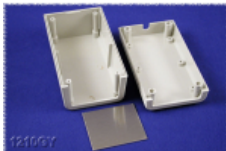
Photos



Assembled (Black)



Assembled (Gray)



Internal View



Upside Down View

Black Case	Gray Case	Length	Width	Depth
1210BK	1210GY	5.20	2.96	2.44

Data subject to change without notice

Mouser Electronics

Authorized Distributor

Click to View Pricing, Inventory, Delivery & Lifecycle Information:

[Hammond:](#)

[1210BK](#) [1210GY](#)