

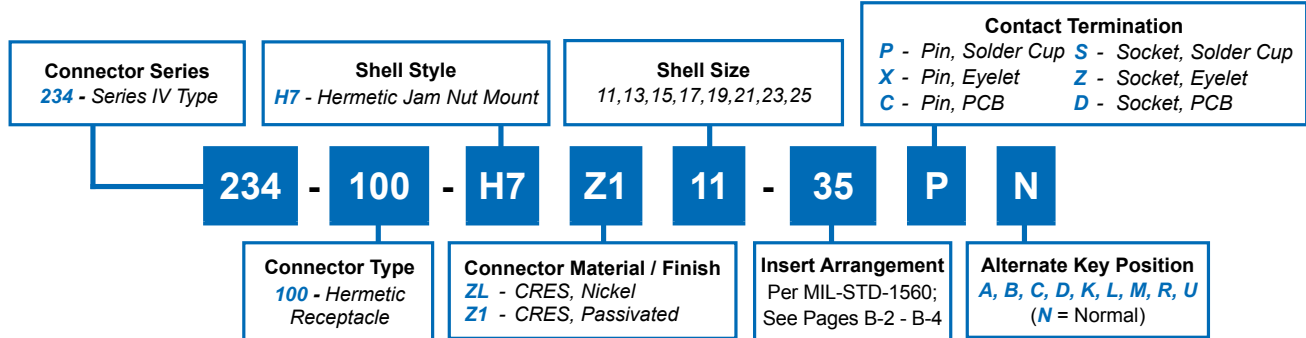


# D38999/43 Jam Nut Mount Hermetic Receptacle MIL-DTL-38999 Series IV



D38999 QPL  
Hermetics

## How To Order: Commercial



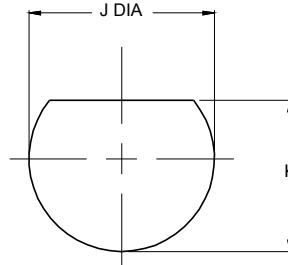
B

TABLE I: CONNECTOR DIMENSIONS

SHELL SIZE CODE	SHELL SIZE	A DIA	B FLATS ±.018(0.5)	C FLAT	D DIA	E DIA ±.010(0.3)	F THREAD ISO METRIC	G ±.033(0.8)	H ±.012(0.3)
B	11	1.385(35.2) 1.362(34.6)	1.250(31.8)	.754(19.2) .745(18.9)	.733(18.6) .716(18.2)	.769(19.5)	M20 X 1.0-6g	.092(2.3)	.106(2.7)
C	13	1.511(38.4) 1.488(37.8)	1.376(35.0)	.941(23.9) .932(23.7)	.858(21.8) .839(21.3)	.899(22.8)	M25 X 1.0-6g	.092(2.3)	.106(2.7)
D	15	1.637(41.6) 1.614(41.0)	1.502(38.2)	1.065(27.1) 1.056(26.8)	.984(25.0) .968(24.6)	1.025(26.0)	M28 X 1.0-6g	.092(2.3)	.106(2.7)
E	17	1.763(44.8) 1.740(44.2)	1.624(41.2)	1.190(30.2) 1.181(30.0)	1.110(28.2) 1.091(27.7)	1.147(29.1)	M32 X 1.0-6g	.092(2.3)	.106(2.7)
F	19	1.948(49.5) 1.925(48.9)	1.813(46.1)	1.316(33.4) 1.306(33.2)	1.236(31.4) 1.220(31.0)	1.273(32.3)	M35 X 1.0-6g	.092(2.3)	.137(3.5)
G	21	2.074(52.7) 2.051(52.1)	1.939(49.3)	1.441(36.6) 1.431(36.3)	1.358(34.5) 1.342(34.1)	1.399(35.5)	M38 X 1.0-6g	.092(2.3)	.137(3.5)
H	23	2.200(55.9) 2.177(55.3)	2.061(52.3)	1.565(39.8) 1.556(39.5)	1.484(37.7) 1.468(37.3)	1.525(38.7)	M41 X 1.0-6g	.092(2.3)	.137(3.5)
J	25	2.326(59.1) 2.299(58.4)	2.187(55.5)	1.692(43.0) 1.681(42.7)	1.610(40.9) 1.594(40.5)	1.647(41.8)	M44 X 1.0-6g	.092(2.3)	.137(3.5)

TABLE I (CONTINUED):  
CUT-OUT DIMENSIONS

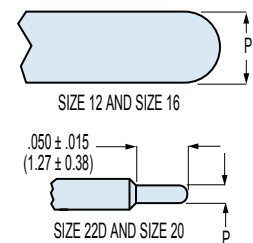
SHELL SIZE CODE	J DIA	K
B	.835 (21.21) .825 (20.96)	.771 (19.58) .761 (19.33)
C	1.020 (25.91) 1.010 (25.65)	.955 (24.26) .945 (24.00)
D	1.145 (29.08) 1.133 (28.78)	1.085 (27.56) 1.075 (27.31)
E	1.270 (32.26) 1.260 (32.00)	1.210 (30.73) 1.200 (30.48)
F	1.395 (35.43) 1.385 (35.18)	1.335 (33.91) 1.325 (33.66)
G	1.520 (38.61) 1.510 (38.35)	1.460 (37.08) 1.450 (36.83)
H	1.645 (41.78) 1.635 (41.53)	1.585 (40.26) 1.575 (40.01)
J	1.770 (44.96) 1.760 (44.70)	1.710 (43.43) 1.700 (43.18)



Recommended Panel  
Cut-Out

TABLE II: CONTACT SIZE

PRINTED CIRCUIT TAIL CONFIGURATIONS  
CONTACT STYLE C AND D



Contact Size	ø P
22D	.011 (0.28) .015 (0.38)
20	.024 (0.61) .028 (0.71)
16	.0635 (1.61) .0615 (1.56)
12	.095 (2.41) .093 (2.36)

# Mouser Electronics

Authorized Distributor

Click to View Pricing, Inventory, Delivery & Lifecycle Information:

## Glenair:

[D38999/43NB35PA](#) [D38999/43NB35PB](#) [D38999/43NB35PC](#) [D38999/43NB35PN](#) [D38999/43NB5PN](#)  
[D38999/43NC35PN](#) [D38999/43NC4PN](#) [D38999/43NC98PN](#) [D38999/43ND18PN](#) [D38999/43ND35CN](#)  
[D38999/43ND35PB](#) [D38999/43ND35PN](#) [D38999/43NE26PN](#) [D38999/43NE35PN](#) [D38999/43NE6PN](#)  
[D38999/43NE8PN](#) [D38999/43NF11PN](#) [D38999/43NF32PN](#) [D38999/43NF35PN](#) [D38999/43NG11PN](#)  
[D38999/43NG35PA](#) [D38999/43NG35PB](#) [D38999/43NG35PN](#) [D38999/43NG41PN](#) [D38999/43NH35PN](#)  
[D38999/43NH55PN](#) [D38999/43NJ29PN](#) [D38999/43NJ35PN](#) [D38999/43NJ61PD](#) [D38999/43NJ61PN](#)  
[D38999/43YB35PN](#) [D38999/43YB5CN](#) [D38999/43YB5PN](#) [D38999/43YB98PN](#) [D38999/43YB99PN](#)  
[D38999/43YC35PN](#) [D38999/43YC4PN](#) [D38999/43YC98PN](#) [D38999/43YD18PN](#) [D38999/43YD35PN](#)  
[D38999/43YD5PN](#) [D38999/43YE26PN](#) [D38999/43YE35PN](#) [D38999/43YF11PN](#) [D38999/43YG11PB](#)  
[D38999/43YG41PN](#) [D38999/43YJ61PN](#) [D38999/43NB35DA](#) [D38999/43NB35DB](#) [D38999/43NB35DC](#)  
[D38999/43NB35DD](#) [D38999/43NB35DK](#) [D38999/43NB35DN](#) [D38999/43NB35SA](#) [D38999/43NB35SB](#)  
[D38999/43NB35SC](#) [D38999/43NB35SD](#) [D38999/43NB35SK](#) [D38999/43NB35SN](#) [D38999/43NB35ZA](#)  
[D38999/43NB35ZB](#) [D38999/43NB35ZC](#) [D38999/43NB35ZD](#) [D38999/43NB35ZK](#) [D38999/43NB35ZN](#)  
[D38999/43NB4DA](#) [D38999/43NB4DB](#) [D38999/43NB4DC](#) [D38999/43NB4DD](#) [D38999/43NB4DK](#) [D38999/43NB4DN](#)  
[D38999/43NB4SA](#) [D38999/43NB4SB](#) [D38999/43NB4SC](#) [D38999/43NB4SD](#) [D38999/43NB4SK](#) [D38999/43NB4SN](#)  
[D38999/43NB4ZA](#) [D38999/43NB4ZB](#) [D38999/43NB4ZC](#) [D38999/43NB4ZD](#) [D38999/43NB4ZK](#) [D38999/43NB4ZN](#)  
[D38999/43NB5DA](#) [D38999/43NB5DB](#) [D38999/43NB5DC](#) [D38999/43NB5DD](#) [D38999/43NB5DK](#) [D38999/43NB5DN](#)  
[D38999/43NB5SA](#) [D38999/43NB5SB](#) [D38999/43NB5SC](#) [D38999/43NB5SD](#) [D38999/43NB5SK](#) [D38999/43NB5SN](#)  
[D38999/43NB5ZA](#) [D38999/43NB5ZB](#) [D38999/43NB5ZC](#) [D38999/43NB5ZD](#) [D38999/43NB5ZK](#)