

4

3

2

SIZE
C

973 - 001 - 00 ME 13 - 1 P N

POLARIZATION: A, B, C, D, E, F, G, N

CONTACT STYLE: SEE TABLE IV

SIZE AND LAYOUT: SEE TABLE XI

CONNECTOR FINISH: SEE TABLE II

CONNECTOR STYLE: SEE TABLE I

REAR ACCESSORY OPTION: SEE TABLE III

BASIC NUMBER: 38999 POWER CONNECTOR

PRODUCT CODE

REVISIONS

REV.	DESCRIPTION	DATE	APPROVED
15	NEW RELEASE DRAWING	4-28-23	E.A.

TABLE I CONNECTOR STYLE

G6	PLUG WITH EMI SPRING
00	RECEPTACLE, WALL MOUNT WITH SLOTTED HOLES
D0	RECEPTACLE, WALL MOUNT WITH ROUND HOLES
CS	RECEPTACLE, WALL MOUNT WITH STANDARD CLINCH NUTS
05	RECEPTACLE, IN-LINE
07	RECEPTACLE, JAM NUT

TABLE II FINISH AND MATERIAL

SYM	MATERIAL	FINISH
NF	ALUMINUM	CAD/O.D. OVER ELECTROLESS NICKEL
MT		NICKEL-PTFE
ME		ELECTROLESS NICKEL
ZR		ZINC NI, BLACK (TRI-VALENT CR)
Z1	STAINLESS	PASSIVATED

TABLE IV CONTACT STYLE

CONTACT CODE	DESCRIPTION	CONTACT DRAWING
A	PIN INSULATOR NO CONTACTS	
P	CRIMP PIN	850-325
P4	REDUCED CRIMP BARREL PIN SIZE 4 CONTACT SIZE 6 BARREL	850-325
B	SOCKET INSULATOR NO CONTACTS	
S	CRIMP SOCKET	850-326
S4	REDUCED CRIMP BARREL SOCKET SIZE 4 CONTACT SIZE 6 BARREL	850-326

TABLE III ACCESSORY OPTIONS

-	ACCESSORY THREAD AND TEETH
B	BANDING CONFIGURATION WITH GROOVE FOR SHRINK BOOT

9: ELECTRICAL PERFORMANCE:

DWV: 5000 VAC PIN-PIN AND PIN-SHELL (SEA LEVEL)
INSULATION RESISTANCE: 5000 MEGOHM MIN AT 500 VDC

8. PIN CONTACTS WITH PROTECTIVE TIP AND SOCKET CONTACTS INSTALLED, ARE FINGER
PROOF TO IEC 60529 LEVEL IP2X (RATED VOLTAGES NOT EXCEEDING 1,000VAC OR
1500VDC). CONTACTS ARE GLENAIR HIGH CONDUCTIVITY CROWN RING CONTACTS.

7. CONNECTORS USE STANDARD MOUNTING CUTOUTS AND ACCESSORY THEADS AND
TEETH PER MIL-DTL-38999 SERIES III

6. CONSULT FACTORY FOR CRIMP TOOLS AND ACCESSORY SELECTION.

5 BLUE COLOR BAND INDICATES REAR RELEASE RETENTION SYSTEM.

4 INSERT ARRANGEMENTS ARE PER THIS DRAWING ONLY.

3. GLENAIR'S 973-001 ARE DESIGNED TO MATE WITH ONLY 973-001 MATES OF THE SAME SIZE,
LAYOUT, AND POLARIZATION AND THE OPPOSITE GENDER.

2 ASSEMBLY IS IDENTIFIED WITH GLENAIR'S NAME, CAGE CODE, PART NUMBER, AND DATE CODE
SPACE PERMITTING

1. MATERIAL/FINISH
HOUSING AND COUPLING RING PER TABLE II.
SEAL/GROMMET: SILICONE BLEND / N.A.
CONTACTS: COPPER ALLOY / GOLD
INSULATOR: HI TEMP COMPOSITE.

NOTES: UNLESS OTHERWISE SPECIFIED

THIS COPYRIGHTED DOCUMENT IS THE PROPERTY OF GLENAIR, INC. AND IS FURNISHED ON THE CONDITION THAT IT IS NOT TO BE DISCLOSED, REPRODUCED IN WHOLE OR IN PART, OR USED TO SOLICIT QUOTATIONS FROM COMPETITIVE SOURCES, OR USED FOR MANUFACTURE BY ANYONE OTHER THAN GLENAIR, INC WITHOUT THE WRITTEN PERMISSION FROM GLENAIR, INC. THE INFORMATION HEREIN HAS BEEN DEVELOPED AT GLENAIR'S EXPENSE AND MAY BE USED FOR ENGINEERING EVALUATION AND INCORPORATION INTO TECHNICAL SPECIFICATIONS AND OTHER DOCUMENTS WHICH SPECIFY PROCUREMENT OF PRODUCTS FROM GLENAIR, INC.									
UNLESS OTHERWISE SPECIFIED DIMENSIONS ARE IN INCHES		DRAWN 5-26-22 E. ALAWNEH CHECK 5-26-22 E. ALAWNEH ENGR 5-26-22 E. ALAWNEH		GLENAIR, INC. 1211 AIR WAY, GLENDALE, CALIFORNIA 91201					
TOLERANCES: FRACTIONS SYMMETRY \pm RADII		D. Brown APPROVED		TITLE CONNECTOR SUPER 9 POWER PLAY					
DECIMALS .XX \pm .010 .XXX \pm .005 .XXXX \pm .0005 ANGLES		D. Brown APPROVED		CODE IDENT. NO. 06324		SIZE C	DWG NO 973-001		REV 15
DO NOT SCALE THIS DRAWING		RELEASE DATE		SCALE: N/A		WEIGHT: N/A		SHEET 1 OF 6	
B/F 21C4332	P/C	25	ORIGINAL RELEASE DATE						

4

3

2

1

4

3

2

SIZE
C

TABLE V - WALL MOUNT AND IN-LINE RECEPTACLES

SHELL SIZE	A THREAD	B SQ	B' SQ	C BSC	D BSC	PP	E	F	J THREAD	L THREAD	ØM MAX
11	.7500-.1P-.3L-TS-2A	1.043 1.019	1.132 1.092	.812	.719	.447 .441	.136 .120	.202 .186	M15 X 1.0-6g 0.100R	.112-40 UNC-3B	.984
13	.8750-.1P-.3L-TS-2A	1.138 1.114	1.226 1.186	.906	.812	.687 .681			M18 X 1.0-6g 0.100R		1.157
17	1.1875-.1P-.3L-TS-2A	1.323 1.299	1.382 1.342	1.062	.969	.937 .930			M25 X 1.0-6g 0.100R		1.406
19	1.2500-.1P-.3L-TS-2A	1.449 1.425	1.476 1.436	1.156	1.062	1.042 1.036			M28 X 1.0-6g 0.100R		1.516
21	1.3750-.1P-.3L-TS-2A	1.575 1.551	1.582 1.542	1.250	1.156	1.167 1.161			M31 X 1.0-6g 0.100R		1.642
23	1.5000-.1P-.3L-TS-2A	1.701 1.677	1.739 1.699	1.375	1.250	1.295 1.286	.162 .146	.250 .234	M34 X 1.0-6g 0.100R	.138-32 UNC-3B	1.768
25	1.6250-.1P-.3L-TS-2A	1.823 1.799	1.884 1.824	1.500	1.375	1.417 1.411			M37 X 1.0-6g 0.100R		1.890

TABLE VI WALL MOUNT MOUNTING HOLES

SHELL SIZE	ØN MIN.	ØP MIN.	ØR HOLES	S1 BSC	S2 BSC
11	.796	.625	.133 .123	.812	.719
13	.922	.750		.906	.812
17	1.219	1.016		1.062	.969
19	1.297	1.141		1.156	1.062
21	1.422	1.266		1.250	1.156
23	1.547	1.375	.159	1.375	1.250
25	1.672	1.484	.149	1.500	1.375

TABLE VII - PLUG CONNECTOR

SHELL SIZE	ØCC MAX	ØDD MAX	EE THREAD
11	.839	.984	M15 X 1.0-6g 0.100R
13	1.008	1.157	M18 X 1.0-6g 0.100R
17	1.276	1.406	M25 X 1.0-6g 0.100R
19	1.382	1.516	M28 X 1.0-6g 0.100R
21	1.508	1.642	M31 X 1.0-6g 0.100R
23	1.626	1.768	M34 X 1.0-6g 0.100R
25	1.752	1.890	M37 X 1.0-6g 0.100R

TABLE VIII - JAM NUT MOUNT RECEPTACLES

SHELL SIZE	A THREAD	ØU	V	W FLAT	X THREAD	Y THREAD
11	.7500-.1P-.3L-TS-2A	1.386 1.362	1.268 1.236	.755 .745	M20 X 1.0-6g 0.100R	M15 X 1.0-6g 0.100R
13	.8750-.1P-.3L-TS-2A	1.512 1.488	1.390 1.358	.942 .932	M25 X 1.0-6g 0.100R	M18 X 1.0-6g 0.100R
17	1.1875-.1P-.3L-TS-2A	1.764 1.740	1.642 1.610	1.191 1.181	M32 X 1.0-6g 0.100R	M25 X 1.0-6g 0.100R
19	1.2500-.1P-.3L-TS-2A	1.949 1.925	1.827 1.795	1.316 1.306	M35 X 1.0-6g 0.100R	M28 X 1.0-6g 0.100R
21	1.3750-.1P-.3L-TS-2A	2.075 2.051	1.953 1.921	1.441 1.431	M38 X 1.0-6g 0.100R	M31 X 1.0-6g 0.100R
23	1.5000-.1P-.3L-TS-2A	2.201 2.177	2.079 2.047	1.566 1.556	M41 X 1.0-6g 0.100R	M34 X 1.0-6g 0.100R
25	1.6250-.1P-.3L-TS-2A	2.323 2.299	2.205 2.173	1.691 1.681	M44 X 1.0-6g 0.100R	M37 X 1.0-6g 0.100R

TABLE IX JAM NUT CUT OUT

SHELL SIZE	ØAA	BB FLAT
11	.835 .825	.771 .761
13	1.020 1.010	.955 .945
17	1.270 1.260	1.210 1.200
19	1.395 1.385	1.335 1.325
21	1.520 1.510	1.460 1.450
23	1.645 1.635	1.585 1.575
25	1.770 1.760	1.710 1.700

TABLE X BANDING CONFIGURATION

SHELL SIZE	ØFF	ØGG	ØHH	ØJJ
11	.600	.662	.550	.595
13	.700	.762	.670	.715
17	.960	1.022	.945	.990
19	1.062	1.125	1.050	1.100
21	1.188	1.250	1.170	1.220
23	1.275	1.338	1.290	1.340
25	1.475	1.538	1.400	1.450

TABLE XI - CONTACT LAYOUTS

LAYOUT	CONTACTS
11-1	1 SIZE 8
13-1	1 SIZE 4
17-2	2 SIZE 8
17-4	2 SIZE 8 AND 2 SIZE 20
19-3	3 SIZE 8
21-4	4 SIZE 8
23-2	2 SIZE 4
25-4	4 SIZE 4

TABLE XII - WIRE SEALING

CONTACT SIZE	WIRE DIAMETER
8	.209-.277
4	.323-.391

THIS COPYRIGHTED DOCUMENT IS THE PROPERTY OF GLENAIR, INC. AND IS FURNISHED ON THE CONDITION THAT IT IS NOT TO BE DISCLOSED, REPRODUCED IN WHOLE OR IN PART, OR USED TO SOLICIT QUOTATIONS FROM COMPETITIVE SOURCES, OR USED FOR MANUFACTURE BY ANYONE OTHER THAN GLENAIR, INC. WITHOUT THE WRITTEN PERMISSION FROM GLENAIR, INC. THE INFORMATION HEREIN HAS BEEN DEVELOPED AT GLENAIR'S EXPENSE AND MAY BE USED FOR ENGINEERING EVALUATION AND INCORPORATION INTO TECHNICAL SPECIFICATIONS AND OTHER DOCUMENTS WHICH SPECIFY PROCUREMENT OF PRODUCTS FROM GLENAIR, INC.

GLENAIR, INC.

1211 AIR WAY, GLENDALE, CALIFORNIA 91201

TITLE

CONNECTOR
SUPER 9 POWER PLAY

CODE IDENT. NO.

SIZE

DWG NO

REV

06324

C

973-001

15

SCALE: N/A

WEIGHT: N/A

SHEET 2 OF 6

4

3

2

1

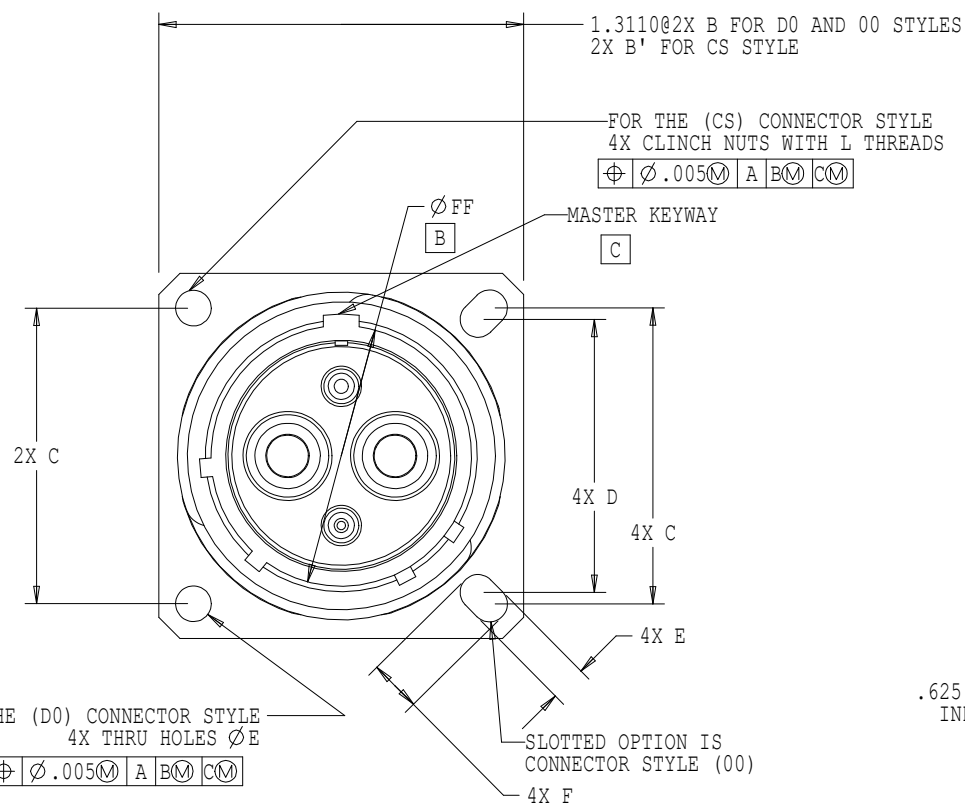
4

3

2

SIZE

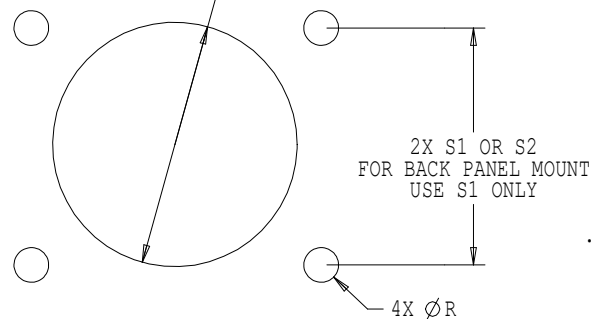
C



FOR THE (D0) CONNECTOR STYLE
4X THRU HOLES $\varnothing \text{E}$

$\oplus \varnothing .005 \text{ M A B M C M}$

$\varnothing \text{N}$ MIN. FOR BACK PANEL MOUNT
 $\varnothing \text{P}$ MIN. FOR FRONT PANEL MOUNT



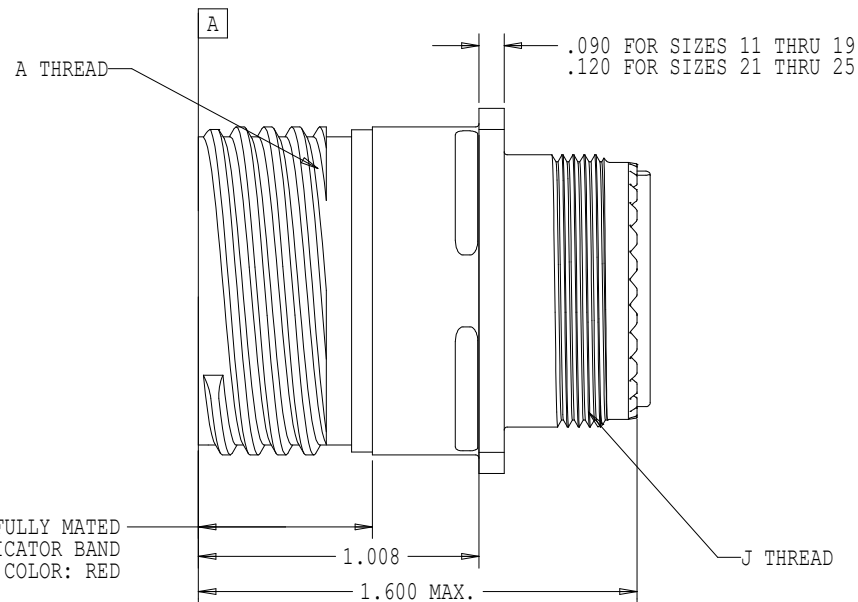
RECOMMENDED PANEL CUT OUT
FOR WALL MOUNT RECEPTACLES

.821 FOR SIZES 11 THRU 19
.791 FOR SIZES 21 THRU 25

A THREAD

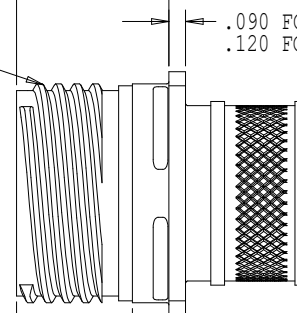
.625 FULLY MATED
INDICATOR BAND
COLOR: RED

BANDING CONNECTOR PANEL THICKNESS
SIZES 11-19: .150 MAX.
SIZES 21-25: .125 MAX.



THREADED CONNECTOR PANEL THICKNESS
ALL SIZES: .300 MAX.

.090 FOR SIZES 11 THRU 19
.120 FOR SIZES 21 THRU 25



.625 FULLY MATED
INDICATOR BAND
COLOR: RED

BANDING CONNECTOR PANEL THICKNESS
SIZES 11-19: .150 MAX.
SIZES 21-25: .125 MAX.

THIS COPYRIGHTED DOCUMENT IS THE PROPERTY OF GLENAIR, INC. AND IS FURNISHED ON THE CONDITION THAT IT IS NOT TO BE DISCLOSED, REPRODUCED IN WHOLE OR IN PART, OR USED TO SOLICIT QUOTATIONS FROM COMPETITIVE SOURCES, OR USED FOR MANUFACTURE BY ANYONE OTHER THAN GLENAIR, INC. WITHOUT THE WRITTEN PERMISSION FROM GLENAIR, INC. THE INFORMATION HEREIN HAS BEEN DEVELOPED AT GLENAIR'S EXPENSE AND MAY BE USED FOR ENGINEERING EVALUATION AND INCORPORATION INTO TECHNICAL SPECIFICATIONS AND OTHER DOCUMENTS WHICH SPECIFY PROCUREMENT OF PRODUCTS FROM GLENAIR, INC.

GLENAIR, INC.

1211 AIR WAY, GLENDALE, CALIFORNIA 91201

TITLE

CONNECTOR
SUPER 9 POWER PLAY

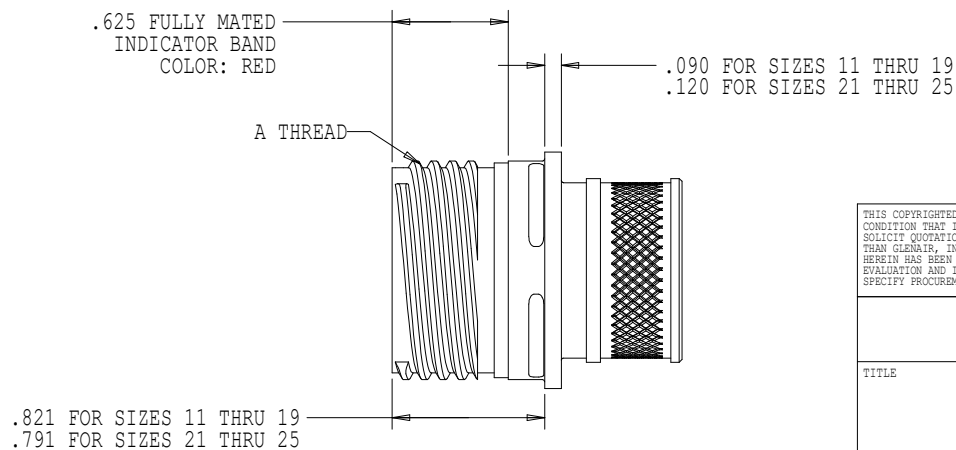
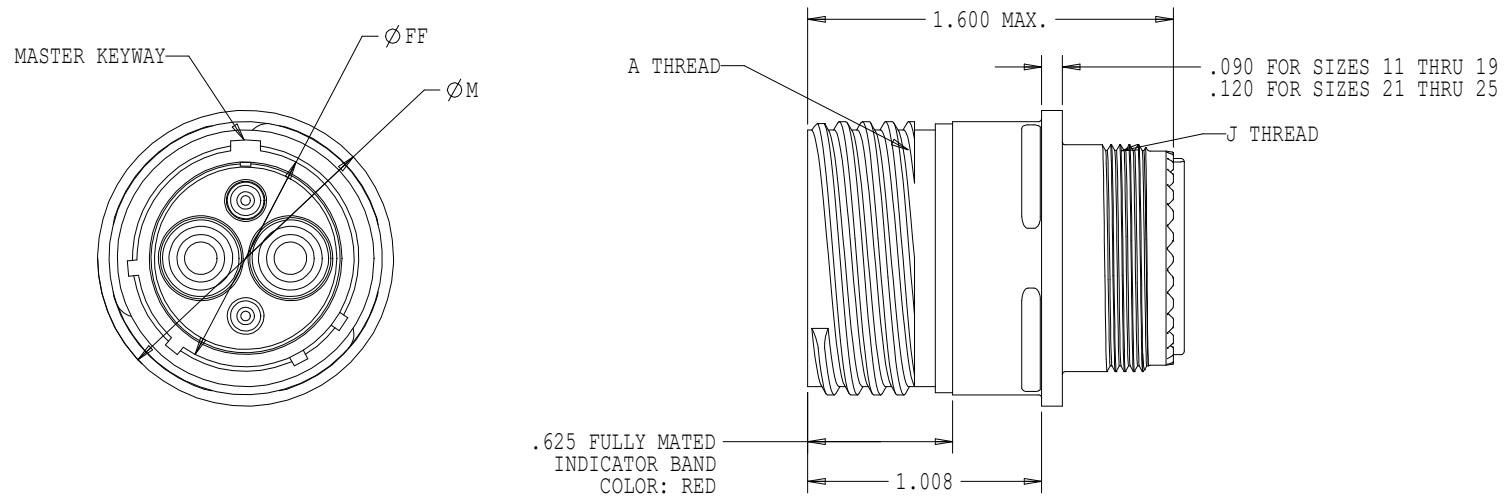
CODE IDENT. NO.	SIZE	DWG NO	REV
06324	C	973-001	15
SCALE: N/A		WEIGHT: N/A	SHEET 3 OF 6

4

3

2

1



THIS COPYRIGHTED DOCUMENT IS THE PROPERTY OF GLENAIR, INC. AND IS FURNISHED ON THE CONDITION THAT IT IS NOT TO BE DISCLOSED, REPRODUCED IN WHOLE OR IN PART, OR USED TO SOLICIT QUOTATIONS FROM COMPETITIVE SOURCES, OR USED FOR MANUFACTURE BY ANYONE OTHER THAN GLENAIR, INC. WITHOUT THE WRITTEN PERMISSION FROM GLENAIR, INC. THE INFORMATION HEREIN HAS BEEN DEVELOPED AT GLENAIR'S EXPENSE AND MAY BE USED FOR ENGINEERING EVALUATION AND INCORPORATION INTO TECHNICAL SPECIFICATIONS AND OTHER DOCUMENTS WHICH SPECIFY PROCUREMENT OF PRODUCTS FROM GLENAIR, INC.

GLENAIR, INC.

1211 AIR WAY, GLENDALE, CALIFORNIA 91201

TITLE

CONNECTOR
SUPER 9 POWER PLAY

CODE IDENT. NO.	SIZE	DWG NO	REV
06324	C	973-001	15
SCALE: N/A		WEIGHT: N/A	SHEET 4 OF 6

4

3

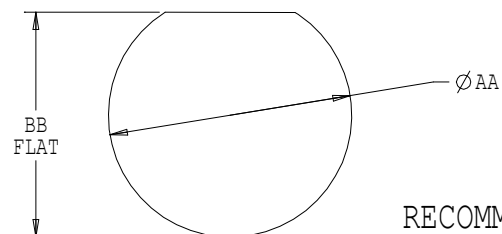
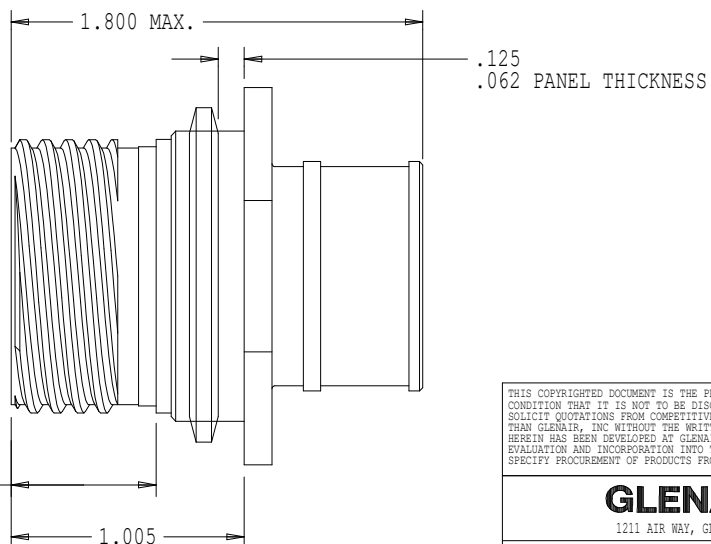
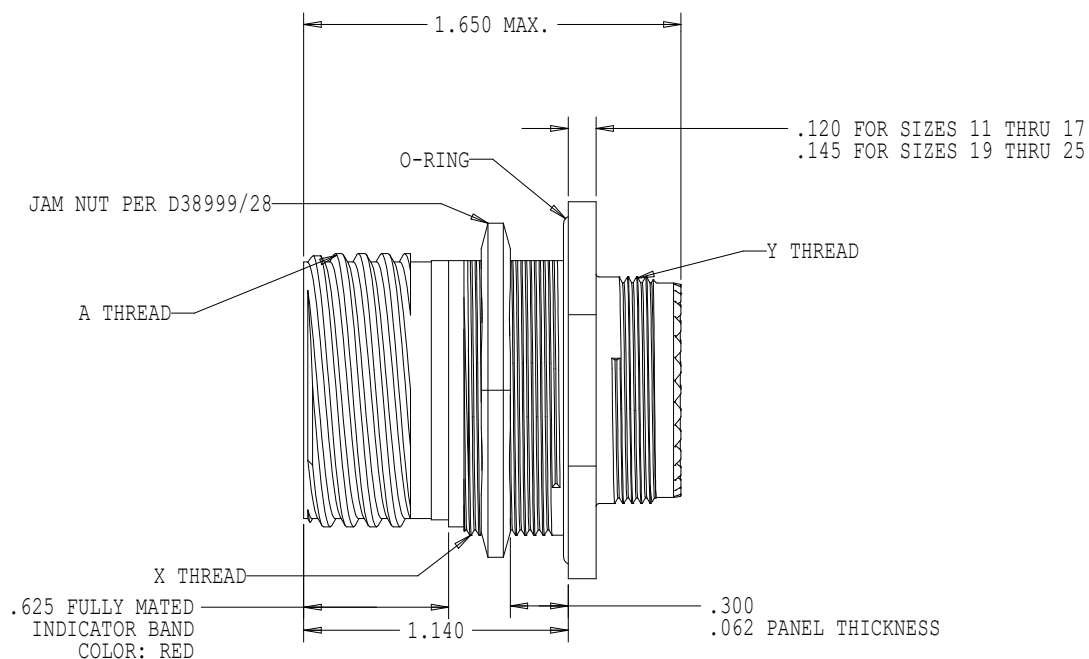
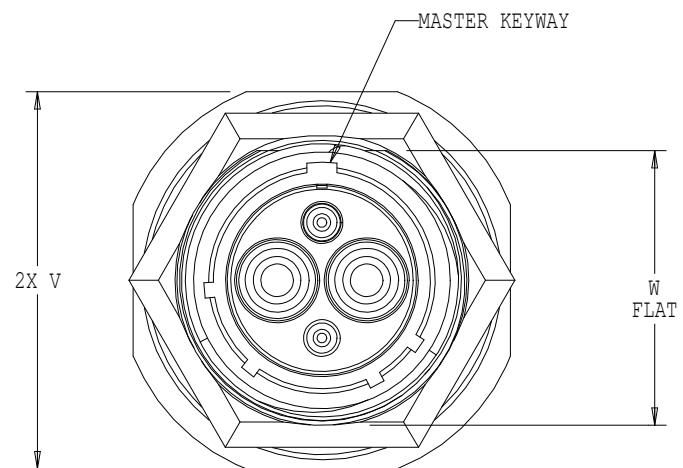
2

SIZE
C

C

B

A



RECOMMENDED PANEL CUT OUT
FOR JAM NUT RECEPTACLES

THIS COPYRIGHTED DOCUMENT IS THE PROPERTY OF GLENAIR, INC. AND IS FURNISHED ON THE CONDITION THAT IT IS NOT TO BE DISCLOSED, REPRODUCED IN WHOLE OR IN PART, OR USED TO SOLICIT QUOTATIONS FROM COMPETITIVE SOURCES, OR USED FOR MANUFACTURE BY ANYONE OTHER THAN GLENAIR, INC. WITHOUT THE WRITTEN PERMISSION FROM GLENAIR, INC. THE INFORMATION HEREIN HAS BEEN DEVELOPED AT GLENAIR'S EXPENSE AND MAY BE USED FOR ENGINEERING EVALUATION AND INCORPORATION INTO TECHNICAL SPECIFICATIONS AND OTHER DOCUMENTS WHICH SPECIFY PROCUREMENT OF PRODUCTS FROM GLENAIR, INC.

GLENAIR, INC.

1211 AIR WAY, GLENDALE, CALIFORNIA 91201

TITLE

CONNECTOR
SUPER 9 POWER PLAY

CODE IDENT. NO.	SIZE	DWG NO	REV
06324	C	973-001	15
SCALE: N/A		WEIGHT: N/A	SHEET 5 OF 6

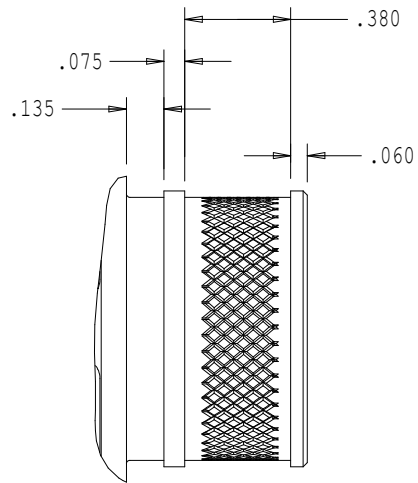
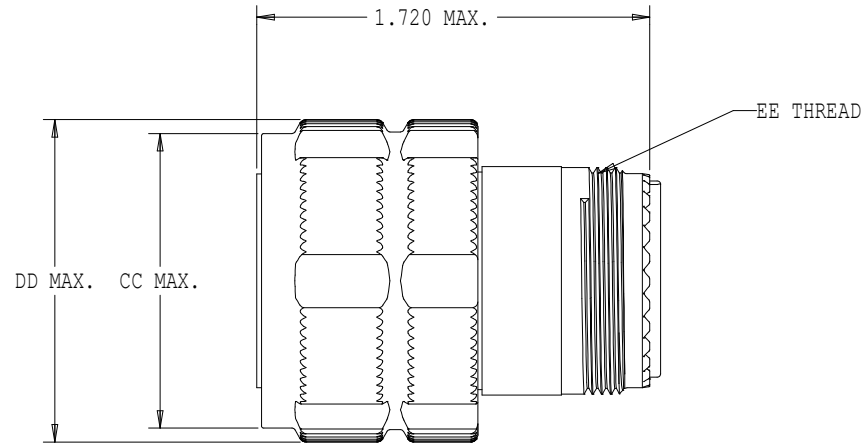
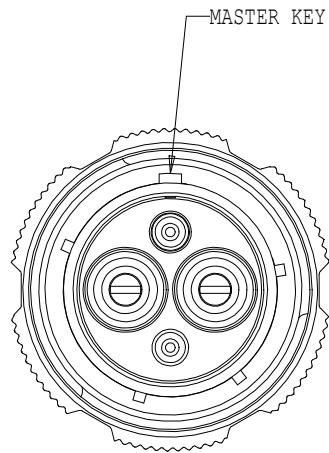
4

3

2

1

G6 PLUG WITH EMI SPRING



BANDING CONFIGURATION
SEE TABLE III

THIS COPYRIGHTED DOCUMENT IS THE PROPERTY OF GLENAIR, INC. AND IS FURNISHED ON THE CONDITION THAT IT IS NOT TO BE DISCLOSED, REPRODUCED IN WHOLE OR IN PART, OR USED TO SOLICIT QUOTATIONS FROM COMPETITIVE SOURCES, OR USED FOR MANUFACTURE BY ANYONE OTHER THAN GLENAIR, INC. WITHOUT THE WRITTEN PERMISSION FROM GLENAIR, INC. THE INFORMATION HEREIN HAS BEEN DEVELOPED AT GLENAIR'S EXPENSE AND MAY BE USED FOR ENGINEERING EVALUATION AND INCORPORATION INTO TECHNICAL SPECIFICATIONS AND OTHER DOCUMENTS WHICH SPECIFY PROCUREMENT OF PRODUCTS FROM GLENAIR, INC.

GLENAIR, INC.

1211 AIR WAY, GLENDALE, CALIFORNIA 91201

TITLE

CONNECTOR
SUPER 9 POWER PLAY

CODE IDENT. NO.	SIZE	DWG NO	REV
06324	C	973-001	15
SCALE: N/A		WEIGHT: N/A	SHEET 6 OF 6

Mouser Electronics

Authorized Distributor

Click to View Pricing, Inventory, Delivery & Lifecycle Information:

[Glenair:](#)

[973-001-00ME11-1PN](#) [973-001-00ME11-1SN](#) [973-001-00ME13-1PN](#) [973-001-00ME13-1SN](#) [973-001-00ME17-2PN](#)
[973-001-00ME17-2SN](#) [973-001-00ME17-4PN](#) [973-001-00ME17-4SN](#) [973-001-00ME19-3PN](#) [973-001-00ME19-3SN](#)
[973-001-00ME21-4PN](#) [973-001-00ME21-4SN](#) [973-001-00ME23-2PN](#) [973-001-00ME23-2SN](#) [973-001-00ME25-4PN](#)
[973-001-00ME25-4SN](#) [973-001-00MT11-1PN](#) [973-001-00MT11-1SN](#) [973-001-00MT13-1PN](#) [973-001-00MT13-1SN](#)
[973-001-00MT17-2PN](#) [973-001-00MT17-2SN](#) [973-001-00MT17-4PN](#) [973-001-00MT17-4SN](#) [973-001-00MT19-3PN](#)
[973-001-00MT19-3SN](#) [973-001-00MT21-4PN](#) [973-001-00MT21-4SN](#) [973-001-00MT23-2PN](#) [973-001-00MT23-2SN](#)
[973-001-00MT25-4PN](#) [973-001-00MT25-4SN](#) [973-001-00NF11-1PN](#) [973-001-00NF11-1SN](#) [973-001-00NF13-1PN](#)
[973-001-00NF13-1SN](#) [973-001-00NF17-2PN](#) [973-001-00NF17-2SN](#) [973-001-00NF17-4PN](#) [973-001-00NF17-4SN](#)
[973-001-00NF19-3PN](#) [973-001-00NF19-3SN](#) [973-001-00NF21-4PN](#) [973-001-00NF21-4SN](#) [973-001-00NF23-2PN](#)
[973-001-00NF23-2SN](#) [973-001-00NF25-4PN](#) [973-001-00NF25-4SN](#) [973-001-00Z111-1PN](#) [973-001-00Z111-1SN](#)
[973-001-00Z113-1PN](#) [973-001-00Z113-1SN](#) [973-001-00Z117-2PN](#) [973-001-00Z117-2SN](#) [973-001-00Z117-4PN](#) [973-001-00Z117-4SN](#)
[973-001-00Z119-3PN](#) [973-001-00Z119-3SN](#) [973-001-00Z121-4PN](#) [973-001-00Z121-4SN](#) [973-001-00Z123-2PN](#) [973-001-00Z123-2SN](#)
[973-001-00Z125-4PN](#) [973-001-00Z125-4SN](#) [973-001-00ZL13-1PN](#) [973-001-00ZL23-2PN](#) [973-001-00ZR11-1PN](#) [973-001-00ZR11-1SN](#)
[973-001-00ZR13-1PN](#) [973-001-00ZR13-1SN](#) [973-001-00ZR17-2PN](#) [973-001-00ZR17-2SN](#) [973-001-00ZR17-4PN](#) [973-001-00ZR17-4SN](#)
[973-001-00ZR19-3PN](#) [973-001-00ZR19-3SN](#) [973-001-00ZR21-4PN](#) [973-001-00ZR21-4SN](#) [973-001-00ZR23-2PN](#) [973-001-00ZR23-2SN](#)
[973-001-00ZR25-4PN](#) [973-001-00ZR25-4SN](#) [973-001-05ME11-1PN](#) [973-001-05ME11-1SN](#) [973-001-05ME13-1PN](#) [973-001-05ME13-1SN](#)
[973-001-05ME17-2PN](#) [973-001-05ME17-2SN](#) [973-001-05ME17-4PN](#) [973-001-05ME17-4SN](#) [973-001-05ME19-3PN](#) [973-001-05ME19-3SN](#)
[973-001-05ME21-4PN](#) [973-001-05ME21-4SN](#) [973-001-05ME23-2PN](#) [973-001-05ME23-2SN](#) [973-001-05ME25-4PN](#) [973-001-05ME25-4SN](#)
[973-001-05MT11-1PN](#) [973-001-05MT11-1SN](#)