

TABLE I

SHELL SIZE		TABLE 1					MAX
A, F, L, S	H	B/A FLATS	C ±.094	D ±.094	E ±.094	F ±.094	DASH NO
08	09	.750	1.625	1.125	1.000	1.625	04
10	11	.875	1.750	1.250	1.125	1.750	06
12	13	1.000	1.875	1.375	1.250	1.875	08
14	15	1.125	2.000	1.500	1.375	2.000	10
16	17	1.250	2.125	1.625	1.500	2.125	12
18	19	1.375	2.250	1.750	1.625	2.250	13
20	21	1.500	2.375	1.875	1.750	2.375	15
22	23	1.625	2.500	2.000	1.875	2.500	18
24	25	1.750	2.675	2.125	2.000	2.675	20



TABLE II

DASH NO	G
01	±.010
02	.125
03	.188
04	.250
05	.312
06	.375
07	.438
08	.500
09	.562
10	.625
11	.688
12	.750
13	.812
14	.875
15	.938
16	1.000
17	1.062
18	1.125
19	1.188
20	1.250

TABLE III

SYM	FINISH DESCRIPTION
B	CADMIUM PLATE/OLIVE DRAB
J	GOLD IRIODITE OVER CADMIUM PLATE OVER NICKEL
M	ELECTROLESS NICKEL
N	CADMIUM PLATE/OLIVE DRAB OVER NICKEL
NF	CAD/D. D. OVER ELECTROLESS NICKEL (500 HOUR SALT SPRAY)
T	CADMIUM PLATE/BRIGHT DIP OVER NICKEL
Z1	SST. MATERIAL/PASSIVATE

REVISIONS

SYM.	DESCRIPTION	DATE	APPROVED
P	REVISED PER DCN 29169	03/13/08	MAG

PART NUMBER DEVELOPMENT

EXAMPLE: 447 F S 090 M 24 04 L 6 P E B

PRODUCT SERIES — 447

CONNECTOR DESIGNATOR, A, F, L, S OR H — F

ANGULAR FUNCTION — S

SYM S = STRAIGHT
SYM J = 90°
SYM H = 45°

BASIC NO — 090

FINISH SYM, TABLE III — M

SHELL SIZE, TABLE I — 24

DASH NO, TABLE II — 04

L = SELF LOCKING
OMIT FOR NONE

OPTIONAL LENGTH IN 1/4 INCH INCREMENTS
IE 6 = 1.50 LENGTH OMIT FOR STD LENGTH

P = POLYSULFIDE BARRIER
OMIT FOR NONE

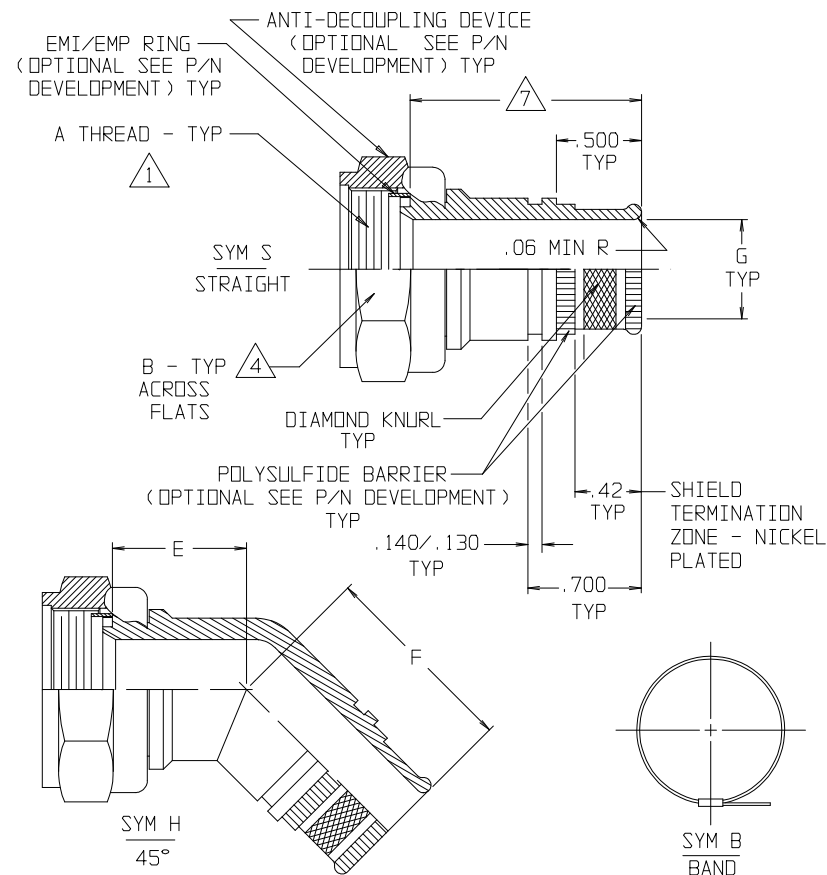
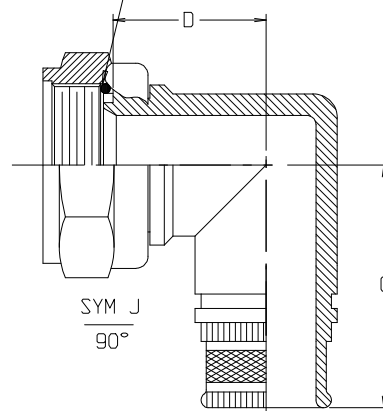
E = EMI/EMP RING
OMIT FOR NONE

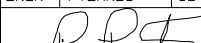
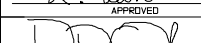
B = SUPPLIED WITH BAND
OMIT FOR NONE

NOTES:

- SEE SHEET 2 (COMMON ACCESSORY INTERFACE DATA).
- FOR EFFECTIVE GROUNDING, CONNECTOR WITH CONDUCTIVE FINISH SHOULD BE USED.
- GLENAIR 600 SERIES BACKSHELL ASSEMBLY TOOLS ARE RECOMMENDED FOR ASSEMBLY AND INSTALLATION.
- "B" DIMENSION DOES NOT APPLY TO "E" EMI/EMP RING STYLE BACKSHELL.
- EMI/EMP RING IS NOT AVAILABLE FOR MIL-C-38999 SER. II CONNECTORS. CONSULT FACTORY FOR SPECIAL P/N. MOD CODE TO MODIFY SER. I INTO SER. II.
- MATERIAL/FINISH:
ADAPTERS, COUPLING NUT - AL ALLOY/SEE TABLE III
BAND, ANTI-DECOUPLING DEVICE - CORROSION RESISTANT MATERIAL
O-RING - SILICONE/N.A.
- LENGTH FOR CONNECTOR DESIGNATOR S AND D IS 1.500, ALL OTHER 1.38 FOR OPTIONAL LENGTH SEE P/N DEVELOPMENT
- CONSULT FACTORY FOR AVAILABILITY OF DASH NO.S EXCEEDING MAX VALUES INDICATED IN TABLE I.

O-RING
NOT SUPPLIED WITH
EMI/EMP RING OPTION
TYP



UNLESS OTHERWISE SPECIFIED DIMENSIONS ARE IN INCHES TOLERANCES: FRACTIONS ± 1/16 DECIMALS .XX ±.03 .XXX ±.015 ANGLES ± 2°	DRAWN	T. LE	03/26/90	GLENAIR, INC. 1211 AIR WAY - GLENDALE - CALIFORNIA 91201					
	CHECK	G. BURGE	03/26/90						
	ENGR	P. DAKES	03/26/90						
	 APPROVED			BACKSHELL RFI/EMI, FOR CONNECTORS PER TABLE I					
 APPROVED									
DO NOT SCALE THIS DRAWING			RELEASE DATE	03/27/90	CODE IDENT. NO.	SIZE	447-090	REV.	P
ORIGINAL RELEASE DATE									
B/F 90-1883	P/C 44	NON REPARABLE COMMERCIAL ITEM		SCALE N/A	WEIGHT N/A	SHEET 1 OF 2			

Mouser Electronics

Authorized Distributor

Click to View Pricing, Inventory, Delivery & Lifecycle Information:

Glenair:

[447FJ090M1405LE](#) [447HS090NF1505LE](#)