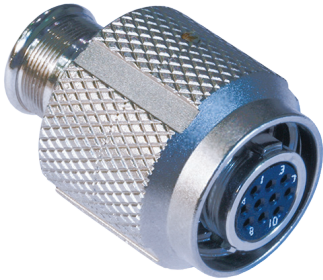


SERIES 805 TRIPLE-START ACME THREAD Mighty Mouse Connectors and Cables



Crimp Contact Environmental Plug with Accessory Threads or Integral Shield Termination Platform



Series 805 Environmental Plugs: feature two shell styles including Integral banding porch version for direct shield attachment using Band-Master ATS® termination system, or accessory thread version for attaching a connector backshell or strain relief. EMI ground spring achieves low shell-to-shell resistance. This nickel-plated beryllium copper spring enables the

Series 805 to meet greater than 60 dB shielding effectiveness from 100 MHz to 15 GHz. Coupling features an anti-decoupling ratchet mechanism in the coupling nut that locks into radial teeth on the plug barrel. This feature allows the Series 805 to stay mated even when under high vibration, without the need for safety wire or torque tools. Crimp-removable contacts, size #23 to #8.

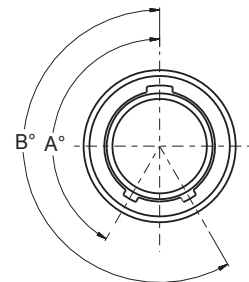
How To Order						
Sample Part Number	805-001	-16	M	8-4	P	A
Series (See Table I)	805-001 = Plug with Banding Platform 805-002 = Plug with Accessory Thread					
Shell Style	-16 = Plug Connector with Anti-Decoupling Mechanism					
Shell Material and Finish	C = Aluminum / Black Anodize (Non-Conductive); RoHS Compliant M = Aluminum / Electroless Nickel; RoHS Compliant MT = Aluminum / Nickel-PTFE RoHS Compliant NF = Aluminum / Cadmium with Olive Drab Chromate ZN = Aluminum / Zinc-Nickel with Olive Drab Chromate ZNU = Aluminum / Zinc-Nickel with Black Chromate Z1 = Stainless Steel / Passivated; RoHS Compliant					
Shell Size - Insert Arrangement	See Contact Arrangements Page J-6					
Contact Type	<div> Connector Supplied with contacts P = Pin S = Socket Connectors with contacts are supplied with crimp contacts. Contacts not installed. For coax contacts, order contacts separately and order connector without contacts. </div> <div> Connector Supplied without contacts A = Pin Connector B = Socket Connector </div> <div> Connector Supplied with 30 AWG Barrel Contacts G = #23 Pin H = #23 Socket </div>					
Shell Key Positions (See Table II)	A = Normal B = Pos. B C = Pos. C D = Pos. D E = Pos. E F = Pos. F					

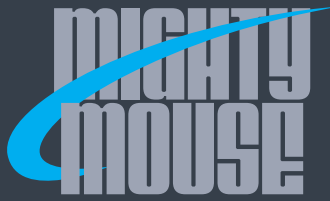
Table I: Series

805-001 Plug with Banding Platform	805-002 Plug with Accessory Thread

Table II: Key Positions

Key Position	Key Rotation	
	A	B
A (Normal)	150°	210°
B	75°	210°
C	95°	230°
D	140°	275°
E	75°	275°
F	95°	210°



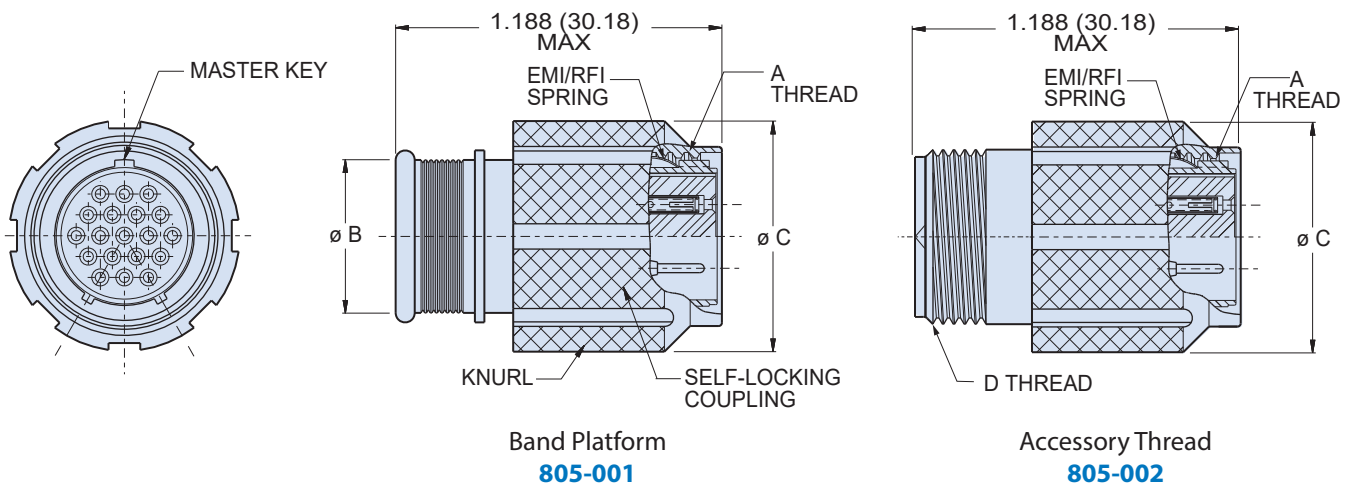


SERIES 805 TRIPLE-START ACME THREAD Mighty Mouse Connectors and Cables



Crimp Contact Environmental Plug with Accessory Threads or Integral Shield Termination Platform

PLUG CONNECTOR - SHELL STYLE 16



Dimensions				
Shell Size	A Thread	Ø B	Ø C	D Thread Accessory
8	.5000-.1P-.3L-TS-2B	.317 (8.05)	.692 (17.58)	.3750-32 UNEF-2A
9	.5625-.1P-.3L-TS-2B	.397 (10.08)	.789 (20.04)	.4375-28 UNEF-2A
10	.6250-.1P-.3L-TS-2B	.473 (12.01)	.827 (21.01)	.5000-28 UNEF-2A
11	.6875-.1P-.3L-TS-2B	.519 (13.18)	.918 (23.32)	.5625-24 UNEF-2A
12	.7500-.1P-.3L-TS-2B	.585 (14.86)	.984 (24.99)	.6250-24 UNEF-2A
13	.8125-.1P-.3L-TS-2B	.646 (16.41)	1.047 (26.59)	.6875-24 UNEF-2A
15	.9375-.1P-.3L-TS-2B	.687 (17.45)	1.098 (27.89)	.7500-20 UNEF-2A
18	1.1250-.1P-.3L-TS-2B	.884 (22.45)	1.287 (32.69)	.9375-20 UNEF-2A
19	1.1875-.1P-.3L-TS-2B	.884 (22.45)	1.311 (33.30)	.9375-20 UNEF-2A
21	1.3125-.1P-.3L-TS-2B	1.003 (25.48)	1.448 (36.78)	1.0625-18 UNEF-2A
23	1.4375-.1P-.3L-TS-2B	1.135 (28.83)	1.562 (39.67)	1.1875-18 UNEF-2A

NOTES

1. This connector mates with all quick coupling high density receptacle connectors with same polarization and opposite contact gender (805-003, 805-004, 805-005, and 805-006).
2. For additional insert arrangements consult factory.
3. Contacts are crimp type and are used in a rear release retention system.
4. Connectors supplied with standard crimp contacts. For coax or other special contacts, order connector less contacts (contact style A or B) and order contacts separately.
5. Materials and Finishes
 - Connector Shell: Aluminum or stainless steel
 - Insulator: High-grade rigid dielectric
 - Seals: Fluorosilicone rubber, blue
 - Pin Contact: Copper alloy, gold over nickel plating
 - Socket Contact: Copper alloy, gold over nickel plating, with SST hood
 - Contact Retainer Clip: Beryllium copper, unplated

Mouser Electronics

Authorized Distributor

Click to View Pricing, Inventory, Delivery & Lifecycle Information:

[Glenair:](#)

[805-001-16M15-37PA-429J](#) [805-001-16M9-10PA-429J](#) [805-001-16M11-19SB-432](#) [805-001-16M11-19SA-432](#) [805-001-16M8-23AA-429C](#) [805-001-16M9-10SC-429J](#) [805-001-16MT10-28BA](#) [805-001-16Z18-4SA-429J](#) [805-001-16M12-26PA-429C](#) [805-001-16M15-37PE](#) [805-001-16M8-7SA-429J](#) [805-001-16M15-37PA-429Z](#) [805-001-16ZNU19-204SA](#) [805-001-16M11-19SB-429Z](#) [805-001-16M12-26PA-429J](#) [805-001-16M10-13SA-429J](#) [805-001-16M8-23SD-429J](#) [805-001-16M8-23SC-429J](#) [805-001-16M8-23SB-429J](#)