

## AC SPD Surge Counter Type 2 EMI Filtered 240Vac Delta 200kA/phase

### SP200-T2F-2403D-LC



#### SP100 240V Delta

##### Features

- UL 1449 4th Edition Listed, Type 2 SPDs
- UL 1283 Listed, EMI Filtering up to -45dB 10kHz to 100MHz
- High Capacity 200kA MOV Protection
- No External Fuses Required
- Local and Remote Visual Status Indicators
- NEMA 4X Enclosure Rating, Watertight and Corrosion-Proof
- Surge Counter

##### Applications

- Electrical Panelboards
- Communications Base Stations
- Industrial Automation
- Electric Vehicle Charging Stations
- Renewable Energy
- IT & Data Centers
- Automatic Transfer Switches
- Motor Control Centers
- LED Lighting

##### Description

AC surge protector (also known as SPD or lightning protector) SP200-T2F-2403D-LC from L-com is a UL1449 4th Ed. panel style SPD that utilizes state of the art MOV technology to protect critical equipment that operates on a 240Vac three-phase delta electrical service. This surge protector provides effective protection against electrical transient surges that are generated both by external lightning events and by internal switching events and supports long-term system reliability by safely shunting high amounts of transient energy while maintaining a very low clamping voltage. L-com AC surge protectors are available in stock with same day shipping.

##### Electrical Specifications

Description	Minimum	Typical	Maximum	Units
Service Type		Three-Phase		
Frequency	50		60	Hz
Maximum Continuous Operating Voltage (MCOV) L - L			320	Vac
Maximum Continuous Operating Voltage (MCOV) L - G			320	Vac

##### Surge Protection Specification

Description	Minimum	Typical	Maximum	Units
Surge Protection Technology		MOV		
Protection Modes		L-N, L-G		
8/20μs Surge Current			200	kA
Nominal Discharge Current Rating (In)		20		kA
VPR 8/20μs L - L			1,200	Vpk
VPR 8/20μs L - G			1,200	Vpk

## AC SPD Surge Counter Type 2 EMI Filtered 240Vac Delta 200kA/phase

### SP200-T2F-2403D-LC



#### Surge Protection Specification

Description	Minimum	Typical	Maximum	Units
Response Time			25	ns
SCCR (Short Circuit Current Rating)		200		kAIC

#### Mechanical Specifications

<b>Size</b>		
Height	9.84 in	[249.94 mm].
Width	5.91 in	[150.11 mm]
Depth	4.17 in	[105.92 mm]
Weight	5.5 lbs	[2.49 kg]
Housing Material and Plating	Polyamide	

#### Environmental Specifications

Temperature Range (Operational)	-40 to +75 deg C
Temperature Range (Storage)	-40 to +75 deg C
Environmental Protection Rating	NEMA 4
Humidity	95% non-condensing

#### Installation

Mount Type	Wall Mount
Service Wiring Terminal	#10 to

#### Compliance Certifications

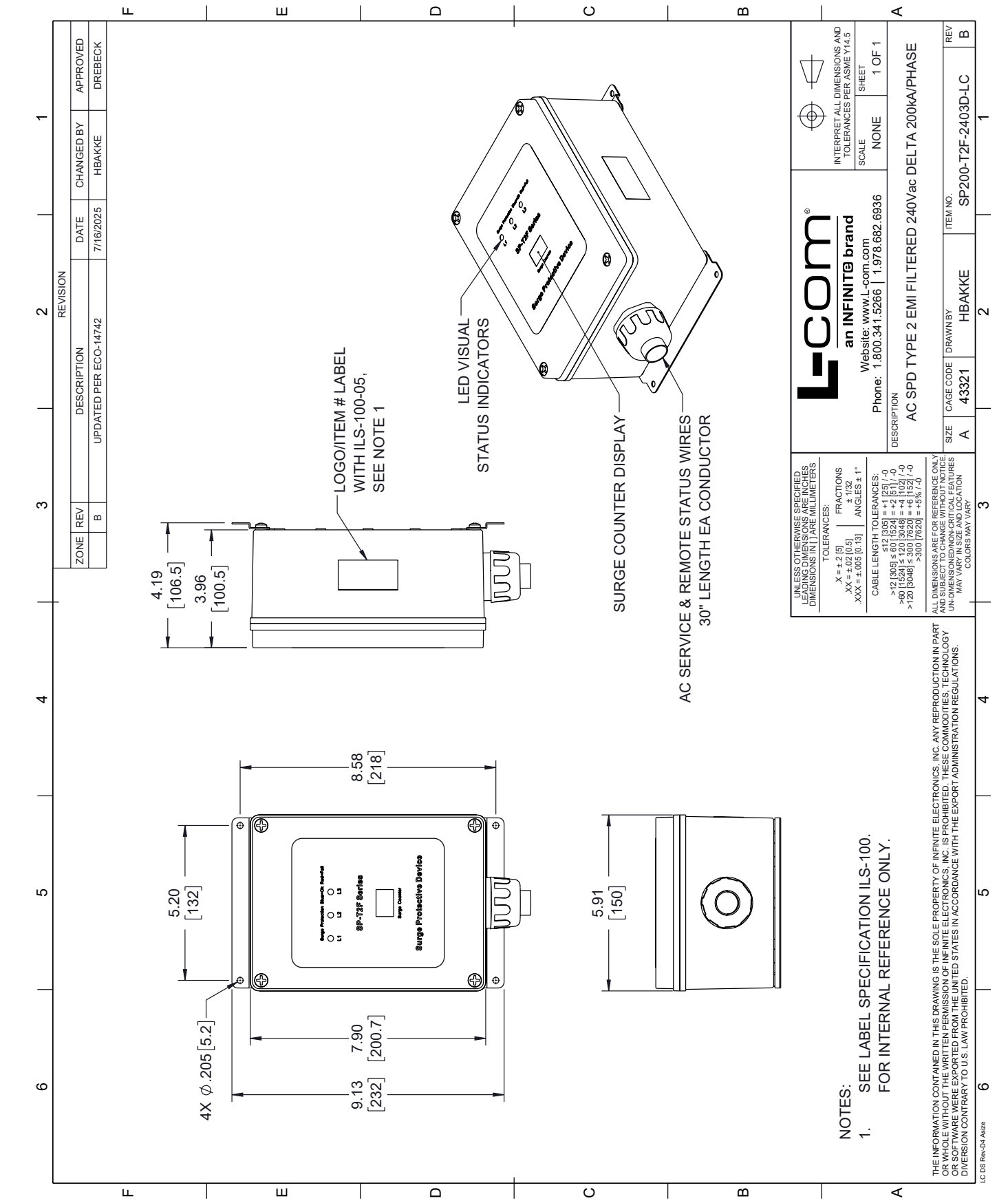
UL Compliant	Yes
Certifications	UL 1449 4th Ed. UL 1283

AC SPD Surge Counter Type 2 EMI Filtered 240Vac Delta 200kA/phase from L-com has same day shipment for domestic and International orders. Our portfolio includes coaxial cable assemblies, connectors, adapters and custom products as well as lightning and surge protectors, NEMA rated enclosures, and an RF product line which includes antennas, amplifiers, passive, and active components.

URL: <https://www.l-com.com/ac-spd-type-2-emi-filtered-240vac-delta-200ka-phase-sp200-t2f-2403d-lc-p.aspx>

The information contained within this document is accurate to the best of our knowledge and representative of the part described herein. It may be necessary to make modifications to the part and/or the documentation of the part in order to implement improvements. L-com reserves the right to make such changes as required. Unless otherwise stated, all specifications are nominal. L-com does not make any representation or warranty regarding the suitability of the part described herein for any particular purpose, and L-com does not assume liability arising out of the use of any part or document.

SP200-T2F-2403D-LC CAD Drawing
AC SPD Surge Counter Type 2 EMI Filtered 240Vac Delta 200kA/phase



# Mouser Electronics

Authorized Distributor

Click to View Pricing, Inventory, Delivery & Lifecycle Information:

[L-Com:](#)

[CSPL04-500](#)