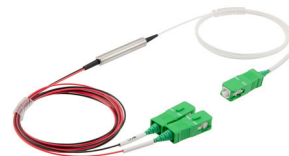


Passive PM DWDM, Field Unit (5.5mmX35mm) Barrel Style, 1 Channel, 100 GHz spacing, start Ch 23, .9mm, 1M cable with SC/APC connectors.



## PPMDW-013-123-195

### Features

- Polarized Maintaining
- Low Insertion Loss
- Compact Size
- Barrel Style Module
- 100 GHz, ITU Ch 23
- .9mm loose tube cable
- 1M, SC/APC

### Applications

- Communications Networks
- Coherent Detection
- Fiber Sensors
- Research and Development

### Description

The L-com PPMDW-013-123-195 is a polarized maintaining DWDM Passive Filter with 1 Channel. The L-com PPMDW-013-123-195 comes with a 3 Port 5.5mmx35mm, Barrel Style filter offering 100 GHz Channel Spacing. The L-com PPMDW-013-123-195 has 1 channel, starting with ITU Ch 23 and has a .9mm diameter 1M cable with SC/APC connectors. The L-com PPMDW-013-123-195 is one of thousands fiber optic products in-stock and ready to ship. Contact our knowledgeable technical support and sales staff with your questions on fiber optic connectivity or other L-com products.

### Configuration

Filter Type	PM DWDM
Module Type	Barrel
Number of Channels	1
Starting Channel	1558.98nm
Ports	3 Port
Package (excluding boots)	5.5mm x 35mm
Connector Type	SC
Polish	APC
PM Connector Alignment	Slow Axis

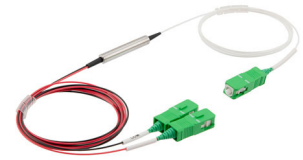
### Filter Specifications

Description	Minimum	Typical	Maximum	Units
Isolation	30	32		dB
Pass Band Bandwidth	-0.11		0.11	nm
Pass Band Insertion Loss		0.6	0.8	dB
Channel Spacing (GHz)		100		GHz
Return Loss	45			dB
Directivity	50			dB
PDL			0.15	dB
Power Handling			300	mW
Extinction Ratio at 23° C	20			dB

### Size

Click the following link (or enter part number in "SEARCH" on website) to obtain additional part information including price, inventory and certifications: [Passive PM DWDM, Field Unit \(5.5mmX35mm\) Barrel Style, 1 Channel, 100 GHz spacing, start Ch 23, .9mm, 1M cable with SC/APC connectors.](#)

Passive PM DWDM, Field Unit (5.5mmX35mm) Barrel Style, 1 Channel, 100 GHz spacing, start Ch 23, .9mm, 1M cable with SC/APC connectors.



## PPMDW-013-123-195

Length	39.37 in [100 cm]
Weight	0.25 lbs [113.4 g]

### Environmental Specifications

#### Temperature

Operating Range	-5 to +70 deg C
Storage Range	-40 to +85 deg C

**Compliance Certifications** (see [product page](#) for current document)

### Plotted and Other Data

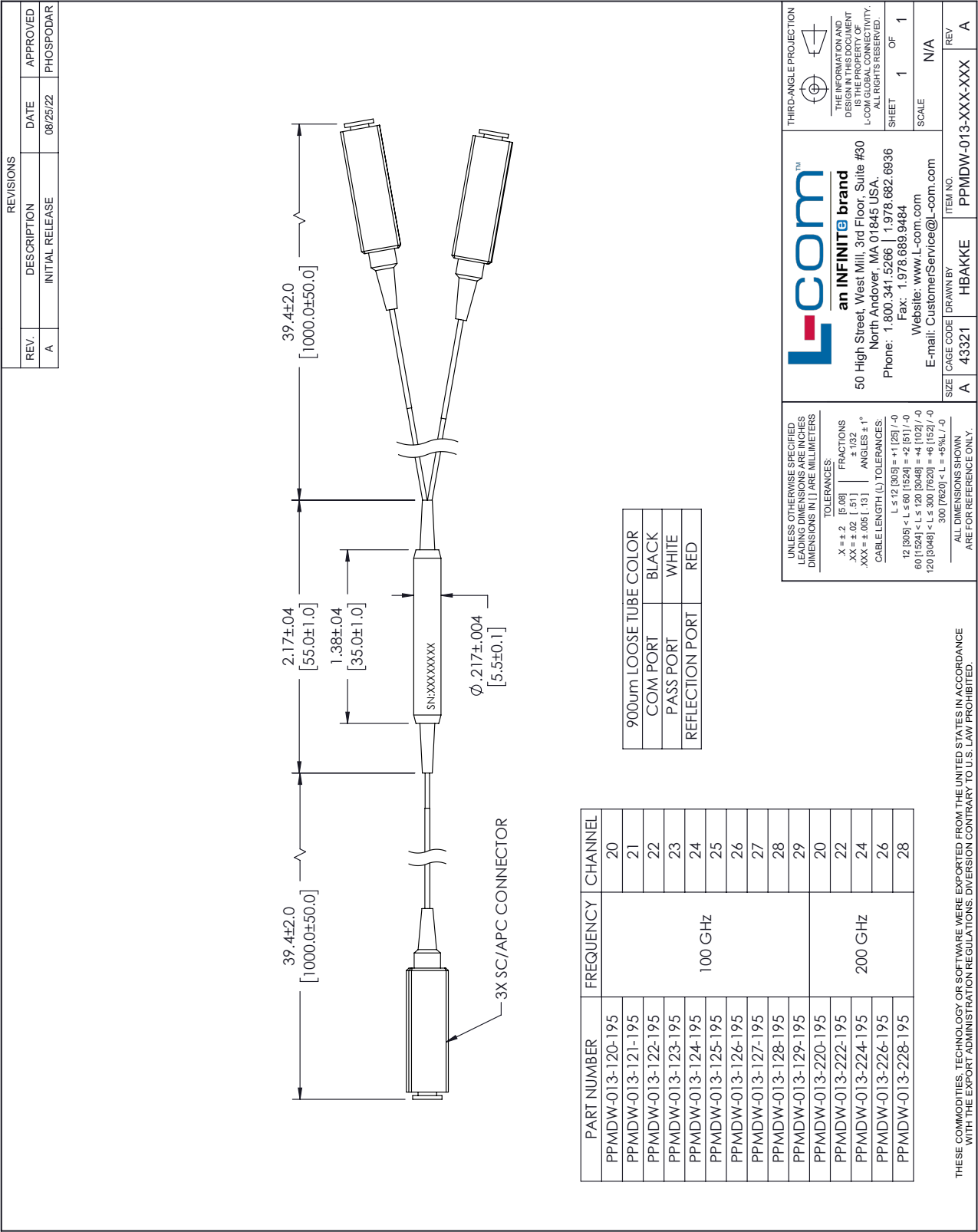
Notes:

Passive PM DWDM, Field Unit (5.5mmX35mm) Barrel Style, 1 Channel, 100 GHz spacing, start Ch 23, .9mm, 1M cable with SC/APC connectors. from L-com has same day shipment for domestic and International orders. Our portfolio includes coaxial cable assemblies, connectors, adapters and custom products as well as lightning and surge protectors, NEMA rated enclosures, and an RF product line which includes antennas, amplifiers, passive, and active components.

The information contained within this document is accurate to the best of our knowledge and representative of the part described herein. It may be necessary to make modifications to the part and/or the documentation of the part in order to implement improvements. L-com reserves the right to make such changes as required. Unless otherwise stated, all specifications are nominal. L-com does not make any representation or warranty regarding the suitability of the part described herein for any particular purpose, and L-com does not assume liability arising out of the use of any part or document.

Passive PM DWDM, Field Unit (5.5mmX35mm) Barrel Style, 1 Channel, 100 GHz spacing, start Ch 23, .9mm, 1M cable with SC/APC connectors.

L-com CAD Drawing



# Mouser Electronics

Authorized Distributor

Click to View Pricing, Inventory, Delivery & Lifecycle Information:

[infinite Electronics:](#)

[PPMCW-013-35-3-195](#)