

20x16x08 UL[®] Listed Polycarbonate Weatherproof
Outdoor IP68 NEMA 6P Enclosure, Dark Gray

NBPC201608



Features

- UL[®] Listed High-Impact, UV Resistant Polycarbonate (Dark Gray)
- Non-metallic latches and a padlock eye
- NEMA Type 6P/ IP68 rated*
- Fully gasketed lid & integrated wall mount flange
- Low Profile, easily removable, Stainless Steel piano style hinge pin

Applications

- Remote Wireless LAN WiFi equipment installations
- Indoor and outdoor installations
- Rapid Deployment Installations
- Corrosive environments & hotspot applications
- Protection of equipment from theft or damage

Description

The box is a rugged weatherproof enclosure that is ideal for both indoor and outdoor applications. Constructed from High-Impact, UV Resistant Polycarbonate material that provides superior durability to impacts and ease of modification while maintaining minimum weight. It is well suited for high temperature or corrosive environments. The integrated wall mount flange allows the enclosure to be mounted directly to any flat wall surface provided proper screws are used into secure studs. The integrated flange also allows you to use compatible HGX-PMT pole mount kits to mount to a variety of pole diameters. The lid features a Stainless Steel piano style hinge pin system that allows for quick removal & can be reattached just as quickly for maximum access and flexibility to install equipment. The enclosure comes with a pair of Non-Metallic locking latches to provide a tight NEMA Type 6P/ IP68 rated* seal. The lid includes a padlock eye allowing you to secure the enclosure from tampering or unauthorized access. The enclosure comes in a Dark Gray (Pantone 422C)

The HGX-PMT series of pole mounting kits allow the populated enclosure to be securely mounted to a variety of different size poles.

Compatible versions include HGX-PMT35, HGX-PMT36, HGX-PMT37, HGX-PMT38 (sold separately)

Mounting standoffs inside the enclosure can be used to install backplates.

We offer three compatible aluminum back plate options (sold separately)

- HGX-NPLATE41 with dimensions of 18.8" x 14.9"
- HGX-NPLATE42 with dimensions of 19.4" x 15.4" which provides 10% more mounting space
- HGX-NPLATE43 with dimensions of 21.1" x 17.1" which provides 20% more mounting space

We also offer a standard PVC back plate (sold separately)

- HGX-NPLATE44 with dimensions of 18.8" x 14.9"

Additional compatible accessories available: (sold separately)

- NBPC-20-DIN35K DIN Rail Kit

*Note: Any holes or openings you might introduce must be properly sealed to maintain NEMA Type 6P / IP68 rating

Size

Outer Height	23.3 in	[591.82 mm]
Outer Width	19 in	[482.6 mm]
Outer Depth	9.4 in	[238.76 mm]
Inner Height	21.1 in	[535.94 mm]
Inner Width	15.9 in	[403.86 mm]

Click the following link (or enter part number in "SEARCH" on website) to obtain additional part information including price, inventory and certifications:
[20x16x08 UL[®] Listed Polycarbonate Weatherproof Outdoor IP68 NEMA 6P Enclosure, Dark Gray NBPC201608](#)

20x16x08 UL® Listed Polycarbonate Weatherproof
Outdoor IP68 NEMA 6P Enclosure, Dark Gray



NBPC201608

Inner Depth	7.9 in	[200.66 mm]
Weight	20 lbs	[9.07 kg]
Enclosure Material	Polycarbonate	

Environmental Specifications

Temperature Rating	-40° to 265°F [-40° to 129°C]
NEMA Rating	6P
Ingress Protection (IP) Rating	IP68

Compliance Certifications

UL Listed	E508536
-----------	---------

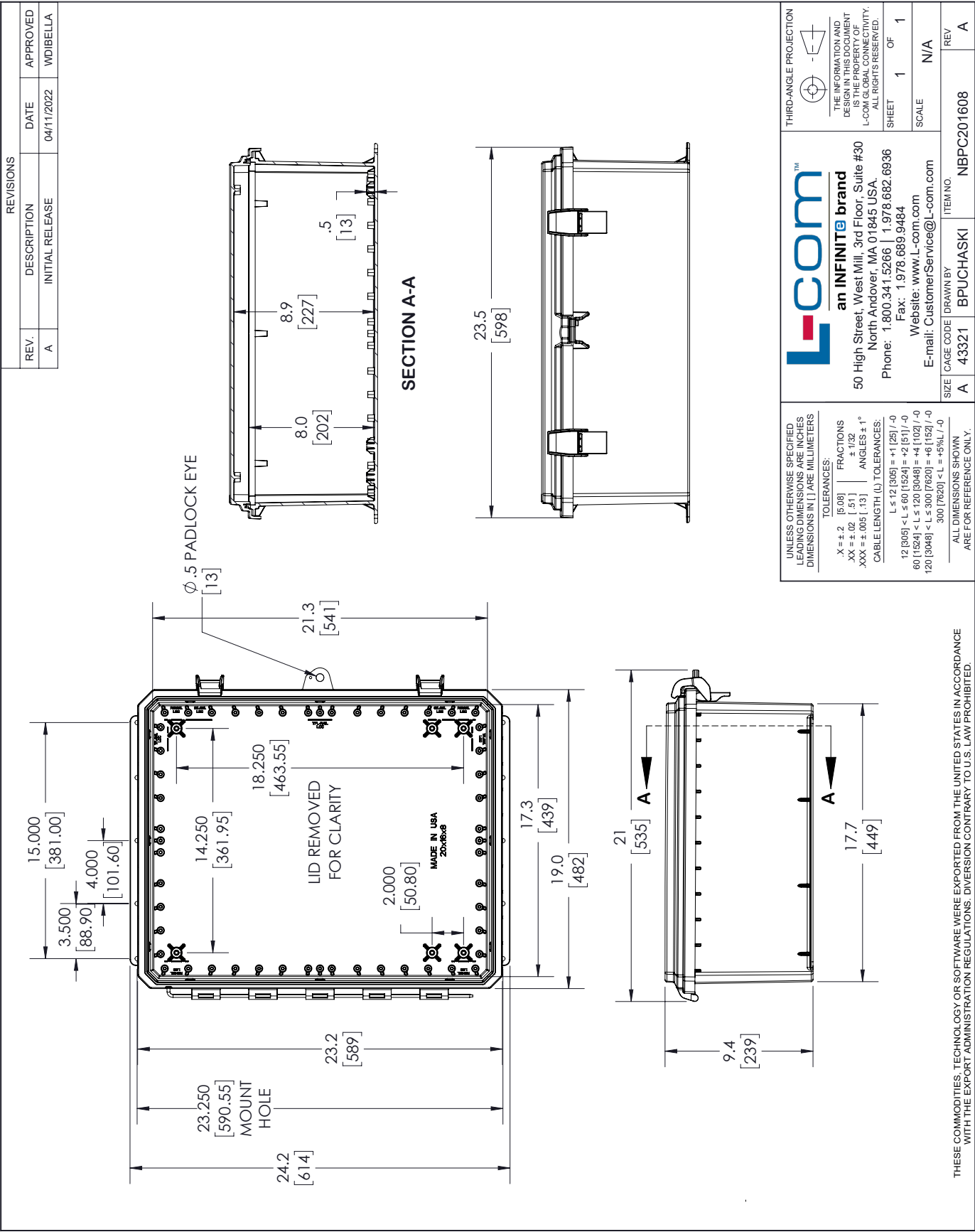
20x16x08 UL® Listed Polycarbonate Weatherproof Outdoor IP68 NEMA 6P Enclosure, Dark Gray from L-com has same day shipment for domestic and International orders. Our portfolio includes coaxial cable assemblies, connectors, adapters and custom products as well as lightning and surge protectors, NEMA rated enclosures, and an RF product line which includes antennas, amplifiers, passive, and active components. Click the following link (or enter part number in "SEARCH" on website) to obtain additional part information including price, inventory and certifications: 20x16x08 UL® Listed Polycarbonate Weatherproof Outdoor IP68 NEMA 6P Enclosure, Dark Gray NBPC201608

URL: <https://www.l-com.com/20x16x08-ul-listed-polycarbonate-weatherproof-outdoor-ip68-nema-6p-enclosure-dark-gray-nbpc201608-p.aspx>

The information contained within this document is accurate to the best of our knowledge and representative of the part described herein. It may be necessary to make modifications to the part and/or the documentation of the part in order to implement improvements. L-com reserves the right to make such changes as required. Unless otherwise stated, all specifications are nominal. L-com does not make any representation or warranty regarding the suitability of the part described herein for any particular purpose, and L-com does not assume liability arising out of the use of any part or document.

The information contained within this document is accurate to the best of our knowledge and representative of the part described herein. It may be necessary to make modifications to the part and/or the documentation of the part in order to implement improvements. L-com reserves the right to make such changes as required. Unless otherwise stated, all specifications are nominal. L-com does not make any representation or warranty regarding the suitability of the part described herein for any particular purpose, and L-com does not assume liability arising out of the use of any part or document.

L-com CAD Drawing



Mouser Electronics

Authorized Distributor

Click to View Pricing, Inventory, Delivery & Lifecycle Information:

[infinite Electronics:](#)

[PXDPCMLD21-100A-485](#)