

12G SDI 1.0/2.3 Male 75 Ohm Connector Crimp/Solder Attachment for Belden 4855R, Belden 1855A



LCCN3099

Configuration

- 1.0/2.3 Male Connector
- 75 Ohms
- Straight Body Geometry
- Belden 4855R, Belden 1855A Interface Type
- Crimp/Solder Attachment

Features

- Meets SMPTE ST 2082-1
- Backwards Compatible with 2081-1
- 12Gb/s Transmission
- Cost Effective
- Designed for High Density Applications

Applications

- 12G-SDI, Video, and Broadband UHDTV
- Broadband Internet Delivery
- Broadcast A/V
- 4K/8K Video Equipment
- Medical Equipment Requiring High Speed Video
- HD Cameras

Description

L-COM's 12G-SDI 1.0/2.3 connector LCCN3099 utilizes 12Gb/s data transfer rates to enable high resolution uncompressed video signal transmission. These products offer 4K and Ultra-HD quality signals that meet SMPTE ST 2082-1. These 75 Ohm connectors are available in PCB edge-mount, straight, or right angle configurations, as well as coaxial connectors to be used in industry standard cable assemblies.

Electrical Specifications

Description	Minimum	Typical	Maximum	Units
Frequency Range	DC		12	GHz

Mechanical Specifications

Size

Length	1.071in	[27.2mm]
Width/Dia.	0.325in	[8.26mm]
Height	0.325in	[8.26mm]
Weight	0.05lbs	[22.68g]

Material Specifications

Description	Material	Plating
Contact	Brass	Gold 10 µin
Insulation	PTFE	

Click the following link (or enter part number in "SEARCH" on website) to obtain additional part information including price, inventory and certifications:
[12G SDI 1.0/2.3 Male 75 Ohm Connector Crimp/Solder Attachment for Belden 4855R, Belden 1855A LCCN3099](#)

12G SDI 1.0/2.3 Male 75 Ohm Connector Crimp/Solder
Attachment for Belden 4855R, Belden 1855A



LCCN3099

Outer Conductor	Brass	Gold 3 µin
Body	Brass	Nickel 100 µin minimum
Crimp Sleeve	Brass	Nickel

Environmental Specifications

Compliance Certifications (see [product page](#) for current document)

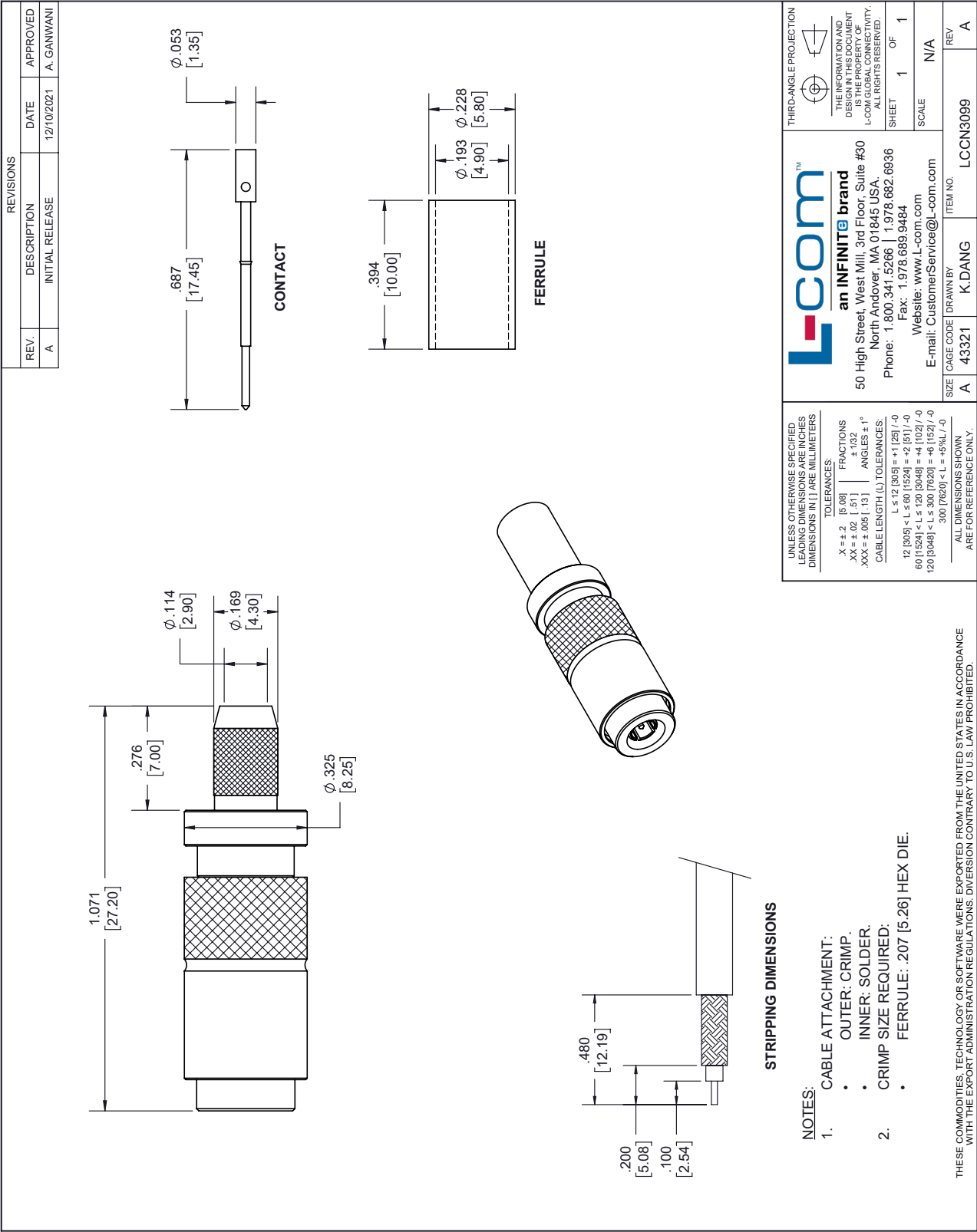
Plotted and Other Data

12G SDI 1.0/2.3 Male 75 Ohm Connector Crimp/Solder Attachment for Belden 4855R, Belden 1855A from L-com has same day shipment for domestic and International orders. Our portfolio includes coaxial cable assemblies, connectors, adapters and custom products as well as lightning and surge protectors, NEMA rated enclosures, and an RF product line which includes antennas, amplifiers, passive, and active components. Click the following link (or enter part number in "SEARCH" on website) to obtain additional part information including price, inventory and certifications: 12G SDI 1.0/2.3 Male 75 Ohm Connector Crimp/Solder Attachment for Belden 4855R, Belden 1855A LCCN3099

URL: <https://www.l-com.com/12g-sdi-75-ohm-1.0-2.3-male-connector-crimp-solder-attachment-belden-4855r-belden-1855a-lccn3099-p.aspx>

The information contained within this document is accurate to the best of our knowledge and representative of the part described herein. It may be necessary to make modifications to the part and/or the documentation of the part in order to implement improvements. L-com reserves the right to make such changes as required. Unless otherwise stated, all specifications are nominal. L-com does not make any representation or warranty regarding the suitability of the part described herein for any particular purpose, and L-com does not assume liability arising out of the use of any part or document. The information contained within this document is accurate to the best of our knowledge and representative of the part described herein. It may be necessary to make modifications to the part and/or the documentation of the part in order to implement improvements. L-com reserves the right to make such changes as required. Unless otherwise stated, all specifications are nominal. L-com does not make any representation or warranty regarding the suitability of the part described herein for any particular purpose, and L-com does not assume liability arising out of the use of any part or document.

L-com CAD Drawing



Mouser Electronics

Authorized Distributor

Click to View Pricing, Inventory, Delivery & Lifecycle Information:

[infinite Electronics:](#)

[FOC-SNMU-165](#)