

## Low Loss SMA Male to TNC Male Right Angle Cable Assembly using LMR-400-UF Coax With Times Microwave Components with HeatShrink



### LCCA9900

#### Configuration

- Connector 1: SMA Male
- Connector 2: TNC Male Right Angle
- Cable Type: LMR-400-UF
- Coax Flex Type: Flexible

#### Description

L-com's LCCA9900 is a low loss SMA male to TNC male right angle cable assembly using LMR-400-UF coax with Times Microwave components with heatshrink and ships same-day. The LMR-400-UF coax of this SMA cable uses the PE (F) dielectric with a VoP of 85%, resulting in very low insertion loss compared to solid dielectrics. These flexible RF cable assemblies are ideal for applications where flexure is required. Our L-com SMA to TNC cable assembly has a male to male gender configuration with flexible LMR-400-UF series coax and operates to 5.8 GHz. The double shield of this SMA cable is layered by tinned copper braid over aluminum tape providing shielding effectiveness greater than 90dB. This right angle TNC cable interface on the LMR-400-UF coax allows for easier connections in tight spaces.

Custom versions of this SMA male to SMA male cable, along with the rest of L-com's other RF assemblies, can also be built and shipped same day. Other available RF cable assembly value added services from L-com include connector orientation or clocking, heat shrink booting and custom labeling. RF testing can also be performed to document the electrical performance of your cable assembly. Contact a sales representative for testing or custom RF cable quotes. Part number LCCA9900 L-com Low Loss SMA Male to TNC Male Right Angle Cable Assembly using LMR-400-UF Coax With Times Microwave Components with HeatShrink data sheet PDF includes details of the RF product specifications, CAD drawing(s) and dimensions below.

#### Electrical Specifications

Description	Minimum	Typical	Maximum	Units
Frequency Range	DC		5.8	GHz
VSWR			1.5:1	
Velocity of Propagation		85		%
RF Shielding	90			dB
Group Delay		1.2 [3.94]		ns/ft [ns/m]
Capacitance		23.9 [78.41]		pF/ft [pF/m]
Inductance		0.06 [0.2]		uH/ft [uH/m]
DC Resistance Inner Conductor		1.07 [3.51]		Ohms/1000ft [Ohms/Km]
DC Resistance Outer Conductor		1.65 [5.41]		Ohms/1000ft [Ohms/Km]
Dielectric Withstanding Voltage (DC)			2,500	Vdc
Jacket Spark			8,000	Vrms
Input Power (Peak)			16	KWatts

#### Specifications by Frequency

## Low Loss SMA Male to TNC Male Right Angle Cable Assembly using LMR-400-UF Coax With Times Microwave Components with HeatShrink



### LCCA9900

Part Number	Length	Description	F1	F2	F3	F4	F5	Units	Weight (lbs)
		Frequency	250	500	1000	2500	5800	MHz	
LCCA9900	Custom Lengths Available	Insertion Loss (Typ.)	0.023	0.034	0.049	0.081	0.13	dB/ft	
			0.08	0.12	0.17	0.27	0.43	dB/m	
LCCA9900-12	12 inch	Insertion Loss (Typ.)	0.33	0.34	0.35	0.39	0.43	dB	0.248
LCCA9900-24	24 inch	Insertion Loss (Typ.)	0.35	0.37	0.4	0.47	0.56	dB	0.335
LCCA9900-36	36 inch	Insertion Loss (Typ.)	0.37	0.41	0.45	0.55	0.69	dB	0.422
LCCA9900-60	60 inch	Insertion Loss (Typ.)	0.42	0.47	0.55	0.71	0.95	dB	0.596
LCCA9900-300	300 inch	Insertion Loss (Typ.)	0.88	1.15	1.53	2.33	3.55	dB	2.336

The insertion loss data for the base model does not include loss due to the connectors. Each length includes insertion loss due to the connectors.

Loss due to Connector 1:	0.1 dB
Loss due to Connector 2:	0.2 dB
Base Weight:	0.248 pounds
Additional Weight per Inch:	0.00725 pounds

### Mechanical Specifications

#### Cable Assembly

Width/Diameter	0.5 in [12.7 mm]
Weight	0.248 lbs [112.49 g]

#### Cable

Cable Type	LMR-400-UF
Impedance	50 Ohms
Inner Conductor Type	Stranded
Inner Conductor Material and Plating	Copper
Dielectric Type	PE (F)
Number of Shields	2
Shield Layer 1	Aluminum Tape
Shield Layer 2	Tinned Copper Braid
Jacket Material	TPE
Jacket Diameter	0.405 in [10.29 mm]
One Time Minimum Bend Radius	1 in [25.4 mm]
Repeated Minimum Bend Radius	4 in [101.6 mm]
Bending Moment	0.38 lbs-ft [0.52 N-m]

Low Loss SMA Male to TNC Male Right Angle Cable  
Assembly using LMR-400-UF Coax With Times  
Microwave Components with HeatShrink



## LCCA9900

### Connectors

Description	Connector 1	Connector 2
Type	SMA Male	TNC Male Right Angle
Impedance	50 Ohms	50 Ohms
Configuration	Straight	Right Angle
Contact Material and Plating	Brass, Gold	Brass, Silver
Contact Plating Specification	50 µin Minimum	
Dielectric Type	Teflon	PTFE
Body Material and Plating	Brass, Tri-Metal	Brass, Silver
Coupling Nut Material and Plating	Brass, Tri-Metal	Brass, Silver

### Environmental Specifications

Operating Range Temperature -40 to +85 deg C

**Compliance Certifications** (see [product page](#) for current document)

### Plotted and Other Data

Notes:  
Values at 25°C, sea level.

## Low Loss SMA Male to TNC Male Right Angle Cable Assembly using LMR-400-UF Coax With Times Microwave Components with HeatShrink



### LCCA9900

#### Typical Performance Data

#### How to Order

Part Number Configuration:

**LCCA9900**

**- xx**

**uu**

Unit of Measure:

cm = Centimeters

<blank> = Inches

Length

Base Number

Example: LCCA9900-12 = 12 inches long cable  
LCCA9900-100cm = 100 cm long cable

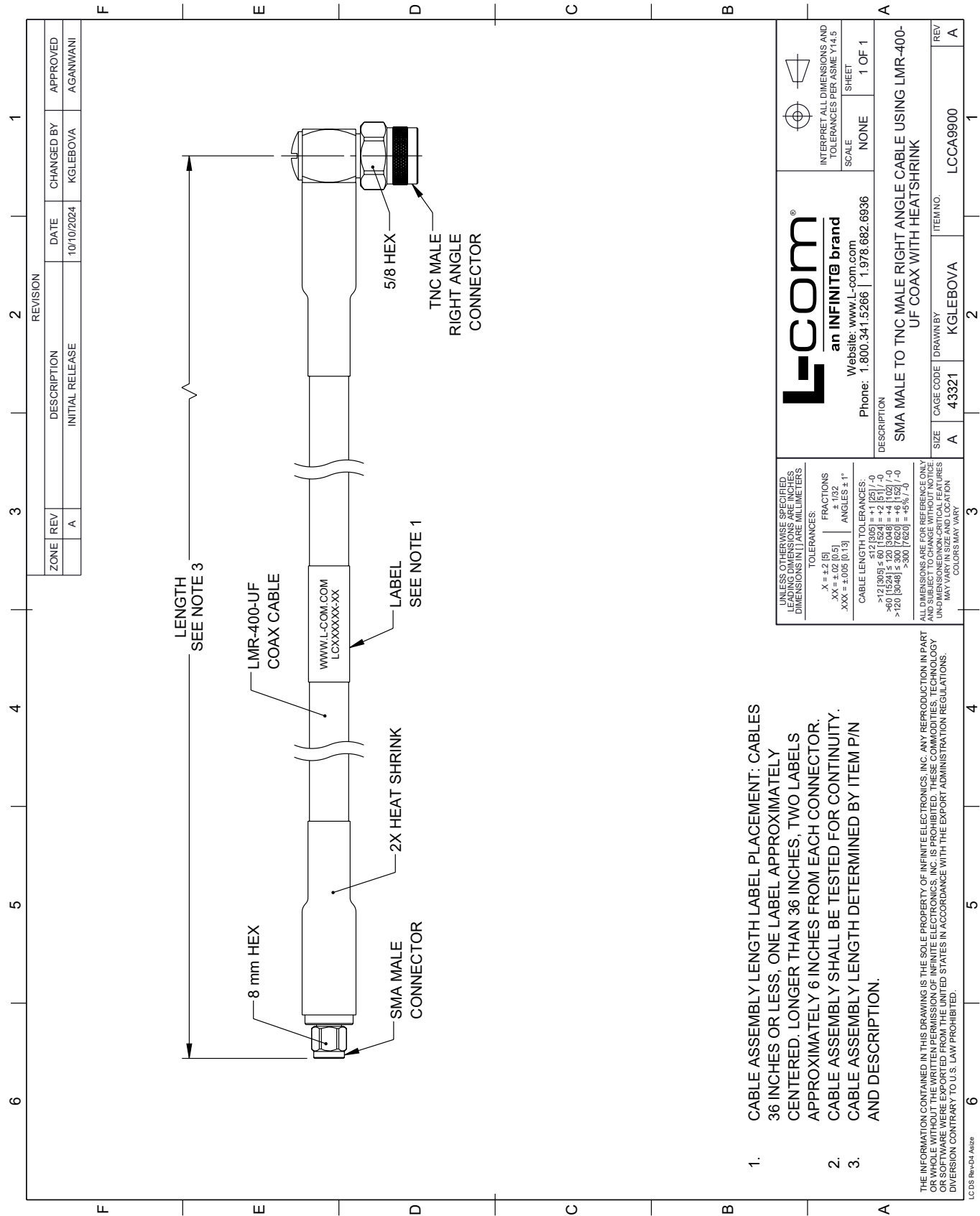
Low Loss SMA Male to TNC Male Right Angle Cable Assembly using LMR-400-UF Coax With Times Microwave Components with HeatShrink from L-com has same day shipment for domestic and International orders. Our portfolio includes coaxial cable assemblies, connectors, adapters and custom products as well as lightning and surge protectors, NEMA rated enclosures, and an RF product line which includes antennas, amplifiers, passive, and active components.

URL: <https://www.l-com.com/sma-male-tnc-male-cable-assembly-invalid-lcca9900-p.aspx>

The information contained within this document is accurate to the best of our knowledge and representative of the part described herein. It may be necessary to make modifications to the part and/or the documentation of the part in order to implement improvements. L-com reserves the right to make such changes as required. Unless otherwise stated, all specifications are nominal. L-com does not make any representation or warranty regarding the suitability of the part described herein for any particular purpose, and L-com does not assume liability arising out of the use of any part or document.

LCCA9900 CAD Drawing

Low Loss SMA Male to TNC Male Right Angle Cable Assembly using LMR-400-UF Coax With Times Microwave Components with HeatShrink



# Mouser Electronics

Authorized Distributor

Click to View Pricing, Inventory, Delivery & Lifecycle Information:

[infinite Electronics:](#)

[LC3MSA00451-24](#) [LCCA9900-FT2](#) [LCCA9900-FT3](#) [LCCA9900-FT5](#) [LCCA9900-FT25](#) [LCCA9900-FT1](#)