

MCX Plug to MCX Plug Right Angle using RG316 Coax Cable in 24 Inches

LCCA9843-24



Configuration

- Connector 1: MCX Plug
- Connector 2: MCX Plug Right Angle
- Cable Type: RG316

Features

- VSWR of 1.4:1

Applications

- Military
- Aerospace
- Wireless Communications
- General Purpose Test

Description

L-com's LCCA9843-24 is a MCX plug to MCX plug right angle using RG316 coax cable in 24 inches and ships same-day. Our L-com MCX to MCX cable assembly has a plug to plug gender configuration with RG316 series coax and operates to 3 GHz. This right angle MCX cable interface on the RG316 allows for easier connections in tight spaces.

Custom versions of this MCX plug to MCX plug cable, along with the rest of L-com's other RF assemblies, can also be built and shipped same day. Other available RF cable assembly value added services from L-com include connector orientation or clocking, heat shrink booting and custom labeling. RF testing can also be performed to document the electrical performance of your cable assembly. Contact a sales representative for testing or custom RF cable quotes. Part number LCCA9843-24 L-com MCX Plug to MCX Plug Right Angle using RG316 Coax Cable in 24 Inches data sheet PDF includes details of the RF product specifications, CAD drawing(s) and dimensions below.

Electrical Specifications

Description	Minimum	Typical	Maximum	Units
Frequency Range	DC		3	GHz
VSWR			1.4:1	
Velocity of Propagation		69		%
Capacitance		29.4 [96.46]		pF/ft [pF/m]

Specifications by Frequency

Description	F1	F2	F3	F4	F5	Units
Frequency	0.1	0.25	0.5	1	3	GHz
Insertion Loss (Typ.)	0.52	0.62	0.78	1.06	1.46	dB

Electrical Specification Notes:

Insertion Loss does not include the loss of the connectors. Insertion Loss is estimated as 0.2 dB per connector

MCX Plug to MCX Plug Right Angle using RG316 Coax Cable in 24 Inches

LCCA9843-24



Mechanical Specifications

Cable Assembly

Length*	24 in [609.6 mm]
Weight	0.29 lbs [131.54 g]

Cable

Cable Type	RG316
Impedance	50 Ohms
Inner Conductor Type	Stranded
Inner Conductor Material and Plating	Copper Clad Steel, Silver
Dielectric Type	PTFE

Connectors

Description	Connector 1	Connector 2
Type	MCX Plug	MCX Plug Right Angle
Impedance	50 Ohms	50 Ohms
Contact Material and Plating	Bronze, Gold over Copper	Bronze, Gold over Copper
Body Material and Plating	Bronze, Copper-Tin-Zinc Alloy	Bronze, Copper-Tin-Zinc Alloy

Compliance Certifications (see [product page](#) for current document)

Plotted and Other Data

Notes:

- Values at 25°C, sea level.

MCX Plug to MCX Plug Right Angle using RG316 Coax Cable in 24 Inches

LCCA9843-24



How to Order

Part Number Configuration:

LCCA9843

- xx

uu

Unit of Measure:
cm = Centimeters
<blank> = Inches
Length
Base Number

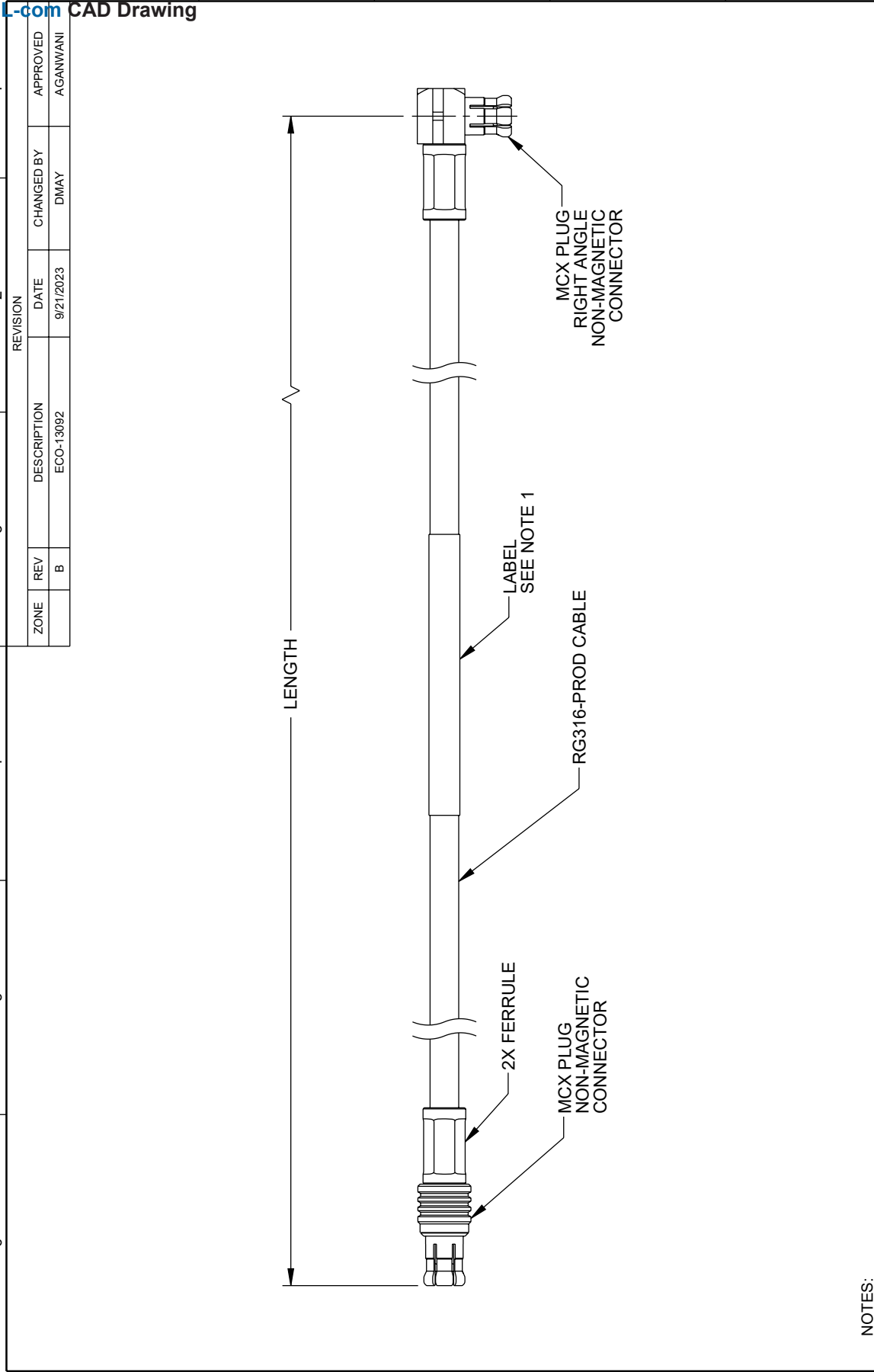
Example: LCCA9843-12 = 12 inches long cable
LCCA9843-100cm = 100 cm long cable

MCX Plug to MCX Plug Right Angle using RG316 Coax Cable in 24 Inches from L-com has same day shipment for domestic and International orders. L-com is a leading manufacturer of wired and wireless connectivity products and committed to in-stock availability and same day shipping. Our portfolio includes coaxial cable assemblies, connectors, adapters and custom products as well as lightning and surge protectors, NEMA rated enclosures, and an RF product line which includes antennas, amplifiers, passive, and active components.

The information contained within this document is accurate to the best of our knowledge and representative of the part described herein. It may be necessary to make modifications to the part and/or the documentation of the part in order to implement improvements. L-com reserves the right to make such changes as required. Unless otherwise stated, all specifications are nominal. L-com does not make any representation or warranty regarding the suitability of the part described herein for any particular purpose, and L-com does not assume liability arising out of the use of any part or document contained within this document is accurate to the best of our knowledge and representative of the part described herein. It may be necessary to make modifications to the part and/or the documentation of the part in order to implement improvements. L-com reserves the right to make such changes as required. Unless otherwise stated, all specifications are nominal. L-com does not make any representation or warranty regarding the suitability of the part described herein for any particular purpose, and L-com does not assume liability arising out of the use of any part or document.

MCX Plug to MCX Plug Right Angle using RG316 Coax Cable in 24 Inches

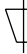

L-com CAD Drawing



NOTES:

1. CABLE ASSEMBLY LENGTH LABEL PLACEMENT: 36 INCH OR LESS, ONE LABEL APPROXIMATELY CENTERED. LONGER THAN 36 INCH, TWO LABELS APPROXIMATELY 6 INCHES FROM EACH CONNECTOR.
2. CABLE ASSEMBLY SHALL BE TESTED FOR CONTINUITY.
3. CABLE ASSEMBLY SHALL BE INDIVIDUALLY PACKAGED.

UNLESS OTHERWISE SPECIFIED, LEADING DIMENSIONS ARE IN INCHES. DIMENSIONS IN [] ARE MILLIMETERS.	
TOLERANCES:	FRACTIONS
.X = ±.2 [5]	XX = ±.02 [0.5]
.XX = ±.005 [0.13]	ANGLES ± 1°
CABLE LENGTH TOLERANCES:	
<12 [305] = ±1 [25] / -0	
>12 [305] ≤ 60 [1524] = +2 [51] / -0	
>60 [1524] ≤ 120 [3048] = +4 [102] / -0	
>120 [3048] ≤ 300 [7620] = +6 [152] / -0	
>300 [7620] = +5% / -0	
ALL DIMENSIONS ARE FOR REFERENCE ONLY. UNDIMENSIONED NON-CRITICAL FEATURES MAY VARY. COLORS MAY VARY.	

<div>L-com® an INFINITI® brand Website: www.L-com.com Phone: 1.800.341.5266 1.978.682.6936</div>		<div></div> <div>INTERPRET ALL DIMENSIONS AND TOLERANCES PER ASME Y14.5</div>		SCALE NONE	SHEET 1 OF 1
DESCRIPTION MCX PLUG TO MCX PLUG RIGHT ANGLE NON-MAGNETIC CABLE USING RG316 COAX					
SIZE A	CAGE CODE 43321	DRAWN BY AKRESOWSKI	ITEM NO. LCCA9843	REV B	

THE INFORMATION CONTAINED IN THIS DRAWING IS THE SOLE PROPERTY OF INFINITE ELECTRONICS, INC. ANY REPRODUCTION IN WHOLE OR IN PART WITHOUT THE WRITTEN PERMISSION OF INFINITE ELECTRONICS, INC. IS PROHIBITED. THESE COMMODITIES, TECHNOLOGY OR SOFTWARE WERE EXPORTED FROM THE UNITED STATES IN ACCORDANCE WITH THE EXPORT ADMINISTRATION REGULATIONS. DIVERSION CONTRARY TO U.S. LAW PROHIBITED.

T4RevD3

Mouser Electronics

Authorized Distributor

Click to View Pricing, Inventory, Delivery & Lifecycle Information:

[infinite Electronics:](#)

[LCCA9843-24](#)