

Hand Formable Test Probe SMA Female to Straight Cut Lead Cable  
Assembly using LC085TBJ Coax, Gold over Nickel Plated Brass Body, 1 FT



## LCCA30724-1FT

### Configuration

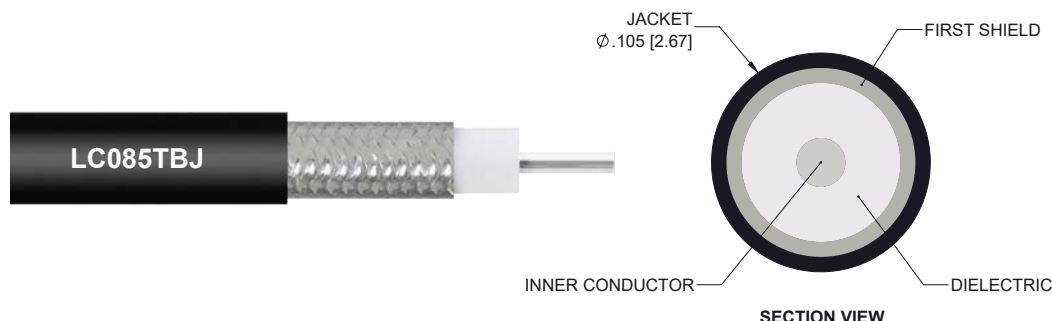
- Connector 1: SMA Female
- Connector 2: Straight Cut Lead
- Cable Type: LC085TBJ

### Features

- 100% RF Tested prior to final trim
- 1.4 Max VSWR to 18 GHz
- 100% High Pot Tested to 500V
- 0.105 Diameter Formable coax
- Individually packed in protective tube

### Applications

- Used as an RF Test Probe to 18 GHz
- RF PCB Board Measurements
- Signal Injection



### Description

L-com's LCCA30724-1FT is a Test Probe SMA Female to Straight Cut Lead Cable Assembly using LC085TBJ Coax, 1 FT and ships same-day. L-com's formable cable assemblies provide a convenient alternative to their semi-rigid versions, as they offer similar electrical performance but can be bent to desired shape without the use of special tools. Our L-com SMA to flush cut cable assembly has a Female to sexless gender configuration with formable LC085TBJ series coax and operates to 18 GHz. The tinned copper braid outer conductor can be easily formed by hand and has an overall diameter of 0.105 inches.

The Test Probe SMA Female to Straight Cut Lead Cable Assembly using LC085TBJ Coax, 1 FT is a convenient test probe designed to be trimmed by the user to their required dimensions and soldered to an exposed microstrip trace to inject a signal or to measure a signal of interest. Each LCCA30724-1FT cable assembly is built with a connector on both ends to verify the electrical performance of 18 GHz with a maximum VSWR of 1.4:1. The cable is then trimmed and placed in a reusable protective tube. These test probes are available with a flush cut or a pre-trimmed cable lead.

Custom versions of this SMA Female to straight cut lead cable, along with the rest of L-com's other RF assemblies, can also be built and shipped same day. Other available RF cable assembly value added services from L-com include connector orientation or clocking, heat shrink booting and custom labeling. RF testing can also be performed to document the electrical performance of your cable assembly. Contact a sales representative for testing or custom RF cable quotes. Part number LCCA30724-1FT L-com Test Probe SMA Female to Straight Cut Lead Cable Assembly using LC085TBJ Coax, 1 FT data sheet PDF include details of the RF product specifications, CAD drawing(s) and dimensions below.

Hand Formable Test Probe SMA Female to Straight Cut Lead Cable  
Assembly using LC085TBJ Coax, Gold over Nickel Plated Brass Body, 1 FT



## LCCA30724-1FT

### Electrical Specifications

Description	Minimum	Typical	Maximum	Units
Frequency Range	DC		18	GHz
VSWR			1.4:1	
Velocity of Propagation		69.5		%
RF Shielding	100			dB
Group Delay		1.43 [4.69]		ns/ft [ns/m]
Capacitance		29 [95.14]		pF/ft [pF/m]
DC Resistance Inner Conductor		65.7 [215.55]		Ohms/1000ft [Ohms/Km]
DC Resistance Outer Conductor		10.2 [33.46]		Ohms/1000ft [Ohms/Km]

### Mechanical Specifications

#### Cable Assembly

Length 12 in [304.8 mm]

#### Cable

Cable Type LC085TBJ  
 Impedance 50 Ohms  
 Inner Conductor Type Solid  
 Inner Conductor Material and Plating Copper Clad Steel, Silver  
 Dielectric Type PTFE  
 Number of Shields 1  
 Outer Conductor Material and Plating Tinned Copper Composite Braid  
 Jacket Material FEP, Black  
 Jacket Diameter 0.105 in [2.67 mm]  
 One Time Minimum Bend Radius 0.5 in [12.7 mm]  
 Repeated Minimum Bend Radius 0.787 in [19.99 mm]

### Connectors

Description	Connector 1	Connector 2
Type	SMA Female	Straight Cut Lead
Impedance	50 Ohms	
Contact Material and Plating	Beryllium Copper, Gold over Nickel	
Dielectric Type	PTFE	
Body Material and Plating	Brass, Gold over Nickel	

Hand Formable Test Probe SMA Female to Straight Cut Lead Cable  
Assembly using LC085TBJ Coax, Gold over Nickel Plated Brass Body, 1 FT



## LCCA30724-1FT

**Compliance Certifications** (see [product page](#) for current document)

### Plotted and Other Data

Notes:

### How to Order

Part Number Configuration:

**LCCA30724**

**- xx**

**uu**

Unit of Measure:  
cm = Centimeters  
<blank> = Inches  
Length  
Base Number

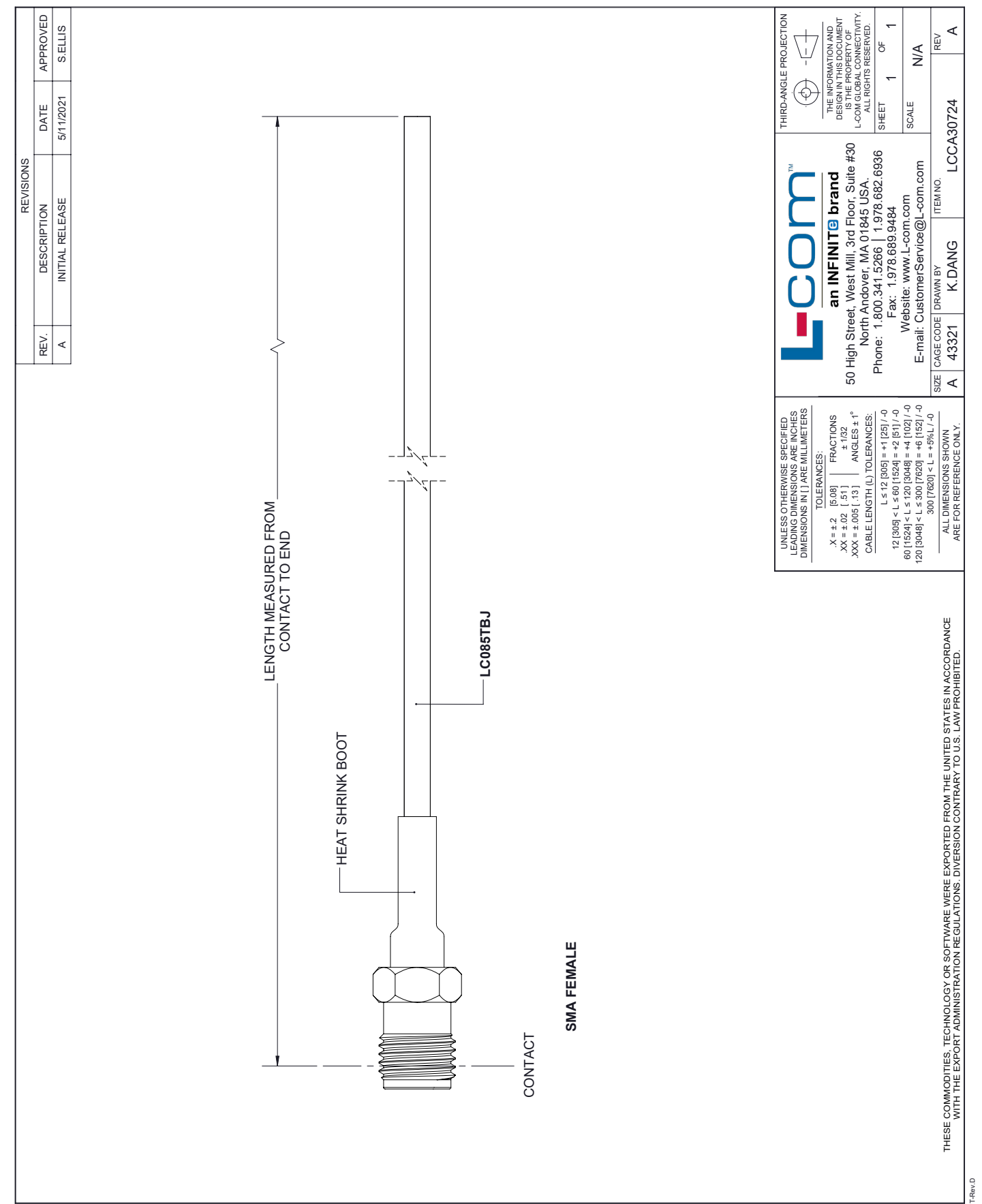
Example: LCCA30724-12 = 12 inches long cable  
LCCA30724-100cm = 100 cm long cable

Hand Formable Test Probe SMA Female to Straight Cut Lead Cable Assembly using LC085TBJ Coax, Gold over Nickel Plated Brass Body, 1 FT from L-com has same day shipment for domestic and International orders. L-com is a leading manufacturer of wired and wireless connectivity products and committed to in-stock availability and same day shipping. Our portfolio includes coaxial cable assemblies, connectors, adapters and custom products as well as lightning and surge protectors, NEMA rated enclosures, and an RF product line which includes antennas, amplifiers, passive, and active components.

The information contained within this document is accurate to the best of our knowledge and representative of the part described herein. It may be necessary to make modifications to the part and/or the documentation of the part in order to implement improvements. L-com reserves the right to make such changes as required. Unless otherwise stated, all specifications are nominal. L-com does not make any representation or warranty regarding the suitability of the part described herein for any particular purpose, and L-com does not assume liability arising out of the use of any part or document. The information contained within this document is accurate to the best of our knowledge and representative of the part described herein. It may be necessary to make modifications to the part and/or the documentation of the part in order to implement improvements. L-com reserves the right to make such changes as required. Unless otherwise stated, all specifications are nominal. L-com does not make any representation or warranty regarding the suitability of the part described herein for any particular purpose, and L-com does not assume liability arising out of the use of any part or document.

Hand Formable Test Probe SMA Female to Straight Cut Lead Cable Assembly  
using LC085TBJ Coax, Gold over Nickel Plated Brass Body, 1 FT

L-com CAD Drawing



# Mouser Electronics

Authorized Distributor

Click to View Pricing, Inventory, Delivery & Lifecycle Information:

[infinite Electronics:](#)

[TRD815SZRA5BLK-3](#)