

N Female Bulkhead to BNC Male Right Angle Cable Assembly using RG58 Coax, 2 FT

LCCA30688-FT2



Configuration

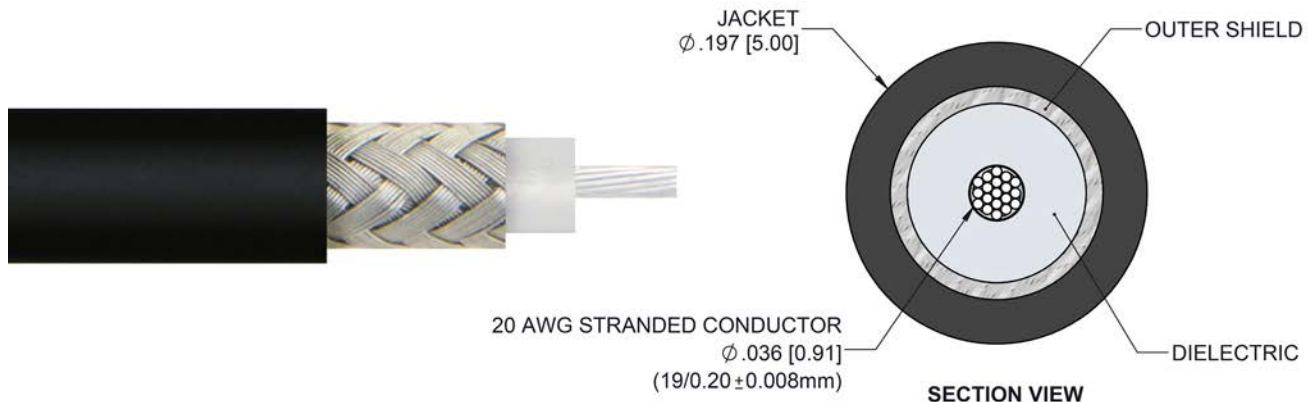
- Connector 1: N Female Bulkhead
- Connector 2: BNC Male Right Angle
- Cable Type: RG58

Features

- 50 Ohm RF (Radio Frequency) Transmission
- RG58 stranded center conductor enhances flexibility
- Same day shipping available
- Right angle body style accommodates tight fit applications
- Bulkhead design is ideal for panel mount applications
- Heat shrink strain relief for a highly durable RF cable assembly

Applications

- RFID systems up to 1 GHz
- General Purpose Test and Measurements
- Wireless Infrastructure
- GPS Timing and telematics



Description

L-com's LCCA30688-FT2 is a N female bulkhead to BNC male right angle cable assembly using RG58 coax, 2 FT and ships same-day. The RG58 coax of this N cable uses the PTFE dielectric with a VoP of 69.5%. These flexible RF cable assemblies are ideal for applications where flexure is required. Our L-com N to BNC cable assembly has a female to male gender configuration with flexible RG58 series coax and operates to 1 GHz. The shielding of this N cable is comprised of tinned copper braid. L-com's RF cable assembly with N bulkhead interface enables system designers to have external connections on their product enclosures or to be used for other rack mount and panel mount applications. This right angle BNC cable interface on the RG58 coax allows for easier connections in tight spaces.

Custom versions of this N female to N male cable, along with the rest of L-com's other RF assemblies, can also be built and shipped same day. Other available RF cable assembly value added services from L-com include connector orientation or clocking, heat shrink booting and custom labeling. RF testing can also be performed to document the electrical performance of your cable assembly. Contact a sales representative for testing or custom RF cable quotes. Part number LCCA30688-FT2 L-com N Female Bulkhead to BNC Male Right Angle Cable Assembly using RG58 Coax, 2 FT data sheet PDF includes details of the RF product specifications, CAD drawing(s) and dimensions below.

Electrical Specifications

Description	Minimum	Typical	Maximum	Units
-------------	---------	---------	---------	-------

N Female Bulkhead to BNC Male Right Angle Cable
Assembly using RG58 Coax, 2 FT



LCCA30688-FT2

Frequency Range	DC	1,000	MHz
VSWR		1.4:1	
Velocity of Propagation	69.5		%
Capacitance	16.1 [52.82]		pF/ft [pF/m]

Specifications by Frequency

Description	F1	F2	F3	F4	F5	Units
Frequency	50	100	200	400	1,000	MHz
Insertion Loss (Typ.)	0.36	0.4	0.44	0.53	0.73	dB

Electrical Specification Notes:

The Insertion Loss data above is based on the performance specifications of the coax cable and connectors used in this assembly.
The Insertion Loss includes an estimated insertion loss of 0.1 per straight connector and 0.2 dB per right angle connector.

Mechanical Specifications

Cable Assembly

Length 24 in [609.6 mm]

Cable

Cable Type RG58
Impedance 50 Ohms
Inner Conductor Type Stranded
Inner Conductor Material and Plating Copper, Silver
Dielectric Type PTFE
Number of Shields 1
Shield Layer 1 Tinned Copper Braid
Jacket Material PVC, Black
Jacket Diameter 0.197 in [5 mm]

Repeated Minimum Bend Radius 2 in [50.8 mm]

N Female Bulkhead to BNC Male Right Angle Cable
Assembly using RG58 Coax, 2 FT

LCCA30688-FT2



Connectors

Description	Connector 1	Connector 2
Type	N Female Bulkhead	BNC Male Right Angle
Impedance	50 Ohms	50 Ohms
Contact Material and Plating	Brass, Gold	Brass, Gold
Dielectric Type	PTFE	PTFE
Outer Conductor Material and Plating	Brass, Nickel	
Body Material and Plating	Brass, Nickel	Brass, Nickel
Coupling Nut Material and Plating		Brass, Nickel

Environmental Specifications

Temperature

Operating Range -20 to +80 deg C

Compliance Certifications (see [product page](#) for current document)

Plotted and Other Data

Notes:

N Female Bulkhead to BNC Male Right Angle Cable
Assembly using RG58 Coax, 2 FT

LCCA30688-FT2



How to Order

Part Number Configuration:

LCCA30688

- **xx**

uu

Unit of Measure:
cm = Centimeters
<blank> = Inches
Length
Base Number

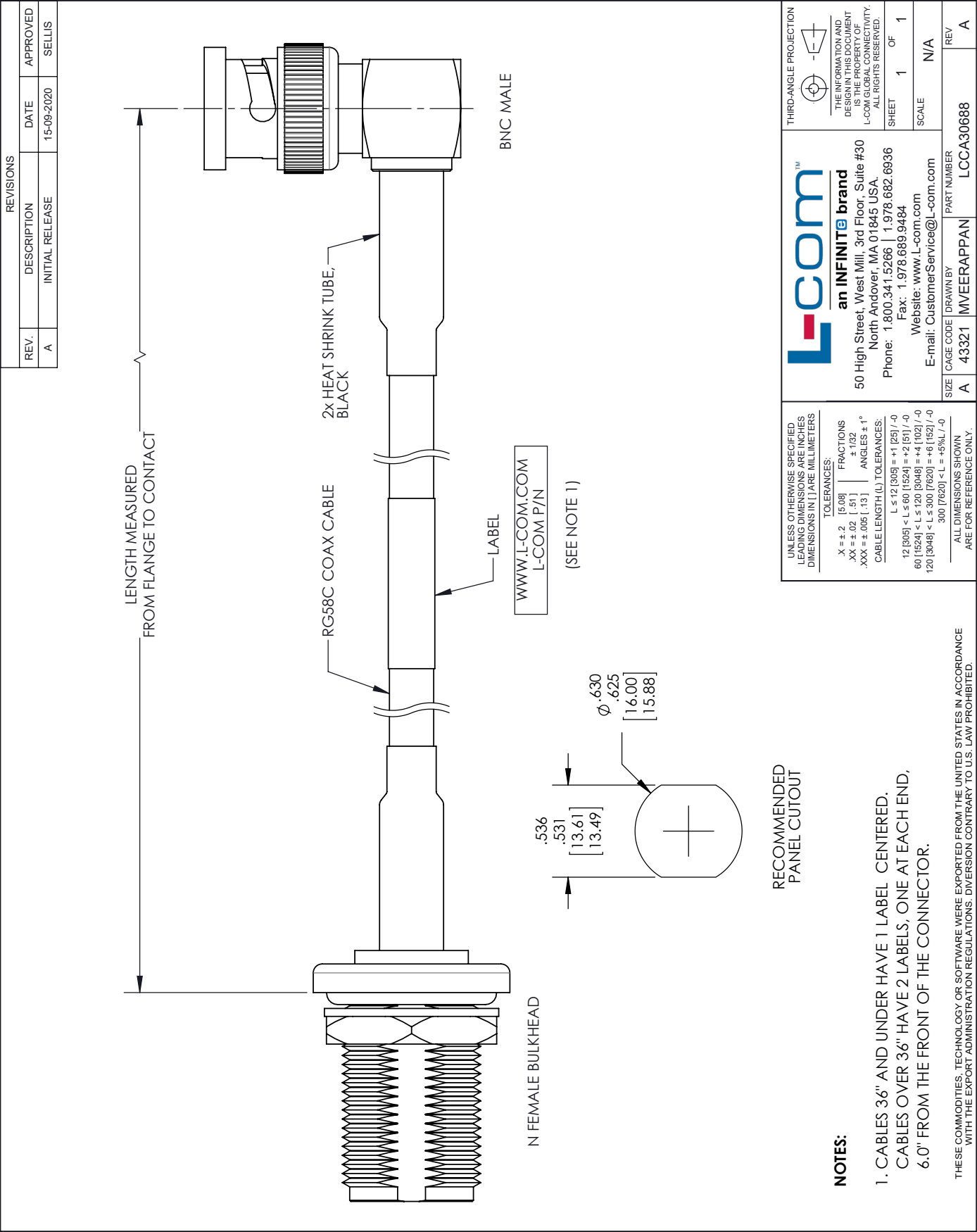
Example: LCCA30688-12 = 12 inches long cable
LCCA30688-100cm = 100 cm long cable

N Female Bulkhead to BNC Male Right Angle Cable Assembly using RG58 Coax, 2 FT from L-com has same day shipment for domestic and International orders. L-com is a leading manufacturer of wired and wireless connectivity products and committed to in-stock availability and same day shipping. Our portfolio includes coaxial cable assemblies, connectors, adapters and custom products as well as lightning and surge protectors, NEMA rated enclosures, and an RF product line which includes antennas, amplifiers, passive, and active components.

The information contained within this document is accurate to the best of our knowledge and representative of the part described herein. It may be necessary to make modifications to the part and/or the documentation of the part in order to implement improvements. L-com reserves the right to make such changes as required. Unless otherwise stated, all specifications are nominal. L-com does not make any representation or warranty regarding the suitability of the part described herein for any particular purpose, and L-com does not assume liability arising out of the use of any part or document contained within this document is accurate to the best of our knowledge and representative of the part described herein. It may be necessary to make modifications to the part and/or the documentation of the part in order to implement improvements. L-com reserves the right to make such changes as required. Unless otherwise stated, all specifications are nominal. L-com does not make any representation or warranty regarding the suitability of the part described herein for any particular purpose, and L-com does not assume liability arising out of the use of any part or document.

N Female Bulkhead to BNC Male Right Angle Cable Assembly using RG58 Coax, 2 FT

L-com CAD Drawing



Mouser Electronics

Authorized Distributor

Click to View Pricing, Inventory, Delivery & Lifecycle Information:

[infinite Electronics:](#)

[LCCA30688-FT2](#)