

N Female Bulkhead to SMA Male Cable Assembly using RG58 Coax, 3 FT

LCCA30683-FT3



Configuration

- Connector 1: N Female Bulkhead
- Connector 2: SMA Male
- Cable Type: RG58

Features

- 50 Ohm RF (Radio Frequency) Transmission
- RG58 stranded center conductor enhances flexibility
- Same day shipping available
- Bulkhead design is ideal for panel mount applications
- Heat shrink strain relief for a highly durable RF cable assembly

Applications

- RFID systems up to 1 GHz
- General Purpose Test and Measurements
- Wireless Infrastructure
- GPS Timing and telematics



Description

L-com's LCCA30683-FT3 is a N female bulkhead to SMA male cable assembly using RG58 coax, 3 FT and ships same-day. The RG58 coax of this N cable uses the PTFE dielectric with a VoP of 69.5%. These flexible RF cable assemblies are ideal for applications where flexure is required. Our L-com N to SMA cable assembly has a female to male gender configuration with flexible RG58 series coax and operates to 1 GHz. The shielding of this N cable is comprised of tinned copper braid. L-com's RF cable assembly with N bulkhead interface enables system designers to have external connections on their product enclosures or to be used for other rack mount and panel mount applications.

Custom versions of this N female to N male cable, along with the rest of L-com's other RF assemblies, can also be built and shipped same day. Other available RF cable assembly value added services from L-com include connector orientation or clocking, heat shrink booting and custom labeling. RF testing can also be performed to document the electrical performance of your cable assembly. Contact a sales representative for testing or custom RF cable quotes. Part number LCCA30683-FT3 L-com N Female Bulkhead to SMA Male Cable Assembly using RG58 Coax, 3 FT data sheet PDF includes details of the RF product specifications, CAD drawing(s) and dimensions below.

Electrical Specifications

| Description | Minimum | Typical | Maximum | Units |
|-------------|---------|---------|---------|-------|
|-------------|---------|---------|---------|-------|

N Female Bulkhead to SMA Male Cable Assembly using RG58 Coax, 3 FT



LCCA30683-FT3

| | | | |
|-------------------------|----|--------------|--------------|
| Frequency Range | DC | 1,000 | MHz |
| VSWR | | 1.4:1 | |
| Velocity of Propagation | | 69.5 | % |
| Capacitance | | 16.1 [52.82] | pF/ft [pF/m] |

Specifications by Frequency

| Description | F1 | F2 | F3 | F4 | F5 | Units |
|-----------------------|------|------|------|------|-------|-------|
| Frequency | 50 | 100 | 200 | 400 | 1,000 | MHz |
| Insertion Loss (Typ.) | 0.29 | 0.35 | 0.42 | 0.54 | 0.84 | dB |

Electrical Specification Notes:

The Insertion Loss data above is based on the performance specifications of the coax cable and connectors used in this assembly.
The Insertion Loss includes an estimated insertion loss of 0.1 dB per connector.

Mechanical Specifications

Cable Assembly

Length 36 in [914.4 mm]

Cable

Cable Type RG58
Impedance 50 Ohms
Inner Conductor Type Stranded
Inner Conductor Material and Plating Copper, Silver
Dielectric Type PTFE
Number of Shields 1
Shield Layer 1 Tinned Copper Braid
Jacket Material PVC, Black
Jacket Diameter 0.197 in [5 mm]

Repeated Minimum Bend Radius 2 in [50.8 mm]

N Female Bulkhead to SMA Male Cable Assembly using RG58 Coax, 3 FT



LCCA30683-FT3

Connectors

| Description | Connector 1 | Connector 2 |
|--------------------------------------|-----------------------|-----------------------|
| Type | N Female Bulkhead | SMA Male |
| Impedance | 50 Ohms | 50 Ohms |
| Contact Material and Plating | Phosphor Bronze, Gold | Phosphor Bronze, Gold |
| Dielectric Type | PTFE | PTFE |
| Outer Conductor Material and Plating | Brass, Nickel | |
| Body Material and Plating | Brass, Nickel | Brass, Nickel |
| Coupling Nut Material and Plating | | Brass, Nickel |

Environmental Specifications

Temperature

Operating Range -20 to +80 deg C

Compliance Certifications (see [product page](#) for current document)

Plotted and Other Data

Notes:

N Female Bulkhead to SMA Male Cable Assembly using RG58 Coax, 3 FT



LCCA30683-FT3

How to Order

Part Number Configuration:

LCCA30683

- **xx**

uu

Unit of Measure:
cm = Centimeters
<blank> = Inches
Length
Base Number

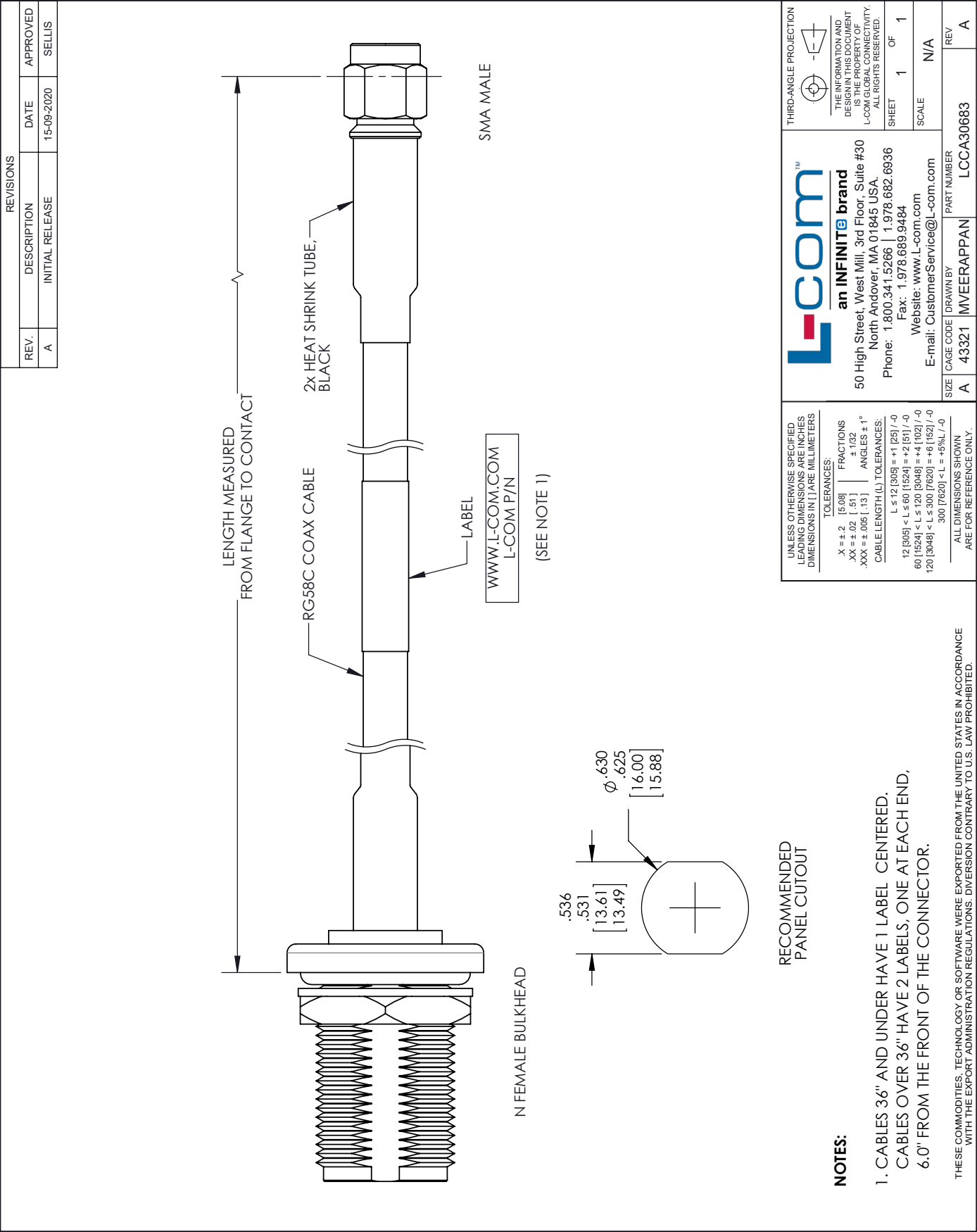
Example: LCCA30683-12 = 12 inches long cable
LCCA30683-100cm = 100 cm long cable

N Female Bulkhead to SMA Male Cable Assembly using RG58 Coax, 3 FT from L-com has same day shipment for domestic and International orders. L-com is a leading manufacturer of wired and wireless connectivity products and committed to in-stock availability and same day shipping. Our portfolio includes coaxial cable assemblies, connectors, adapters and custom products as well as lightning and surge protectors, NEMA rated enclosures, and an RF product line which includes antennas, amplifiers, passive, and active components.

The information contained within this document is accurate to the best of our knowledge and representative of the part described herein. It may be necessary to make modifications to the part and/or the documentation of the part in order to implement improvements. L-com reserves the right to make such changes as required. Unless otherwise stated, all specifications are nominal. L-com does not make any representation or warranty regarding the suitability of the part described herein for any particular purpose, and L-com does not assume liability arising out of the use of any part or document contained within this document is accurate to the best of our knowledge and representative of the part described herein. It may be necessary to make modifications to the part and/or the documentation of the part in order to implement improvements. L-com reserves the right to make such changes as required. Unless otherwise stated, all specifications are nominal. L-com does not make any representation or warranty regarding the suitability of the part described herein for any particular purpose, and L-com does not assume liability arising out of the use of any part or document.

N Female Bulkhead to SMA Male Cable Assembly using RG58 Coax, 3 FT

L-com CAD Drawing



Mouser Electronics

Authorized Distributor

Click to View Pricing, Inventory, Delivery & Lifecycle Information:

[infinite Electronics:](#)

[LCCA30683-FT3](#)