

## SMA Male to N Male Cable Assembly using LC085TBJ Coax, 4 FT

### LCCA30605-FT4



#### Configuration

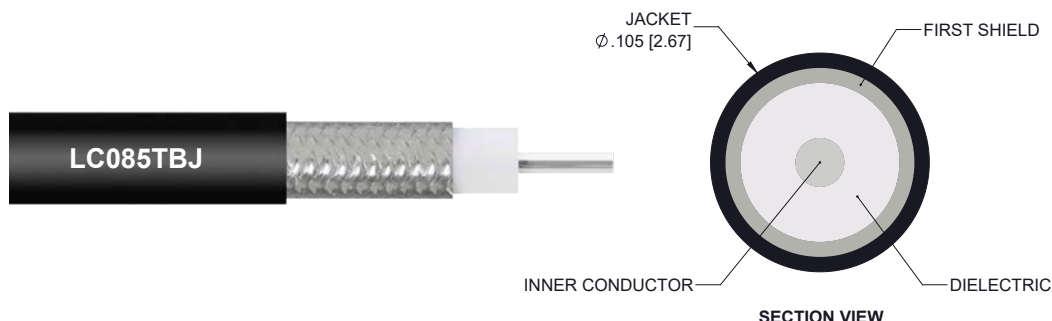
- Connector 1: SMA Male
- Connector 2: N Male
- Cable Type: LC085TBJ

#### Features

- Max Frequency 11 GHz
- Shielding Effectivity > 100dB
- PTFE Dielectric with 69.5% VoP
- Hand Formable
- Tin Filled Copper Composite Braid Outer Conductor
- FEP Jacket

#### Applications

- General Purpose
- Laboratory Use
- System Interconnect



#### Description

L-com's LCCA30605-FT4 is a SMA male to N male cable assembly using LC085TBJ coax, 4 FT and ships same-day. The LC085TBJ coax of this SMA cable uses the PTFE dielectric with a VoP of 69.5%. These formable RF cable assemblies are a great alternative to expensive semi-rigid assemblies because they can be hand formed to fit specific designs. Our L-com SMA to N cable assembly has a male to male gender configuration with formable LC085TBJ series coax and operates to 11 GHz. The jacketed outer conductor is easily formed by hand with an overall diameter of 0.105 inches and excellent shielding effectiveness greater than 100dB.

Custom versions of this SMA male to SMA male cable, along with the rest of L-com's other RF assemblies, can also be built and shipped same day. Other available RF cable assembly value added services from L-com include connector orientation or clocking, heat shrink booting and custom labeling. RF testing can also be performed to document the electrical performance of your cable assembly. Contact a sales representative for testing or custom RF cable quotes. Part number LCCA30605-FT4 L-com SMA Male to N Male Cable Assembly using LC085TBJ Coax, 4 FT data sheet PDF includes details of the RF product specifications, CAD drawing(s) and dimensions below.

SMA Male to N Male Cable Assembly using LC085TBJ Coax, 4 FT



## LCCA30605-FT4

### Electrical Specifications

| Description             | Minimum | Typical     | Maximum | Units        |
|-------------------------|---------|-------------|---------|--------------|
| Frequency Range         | DC      |             | 11      | GHz          |
| VSWR                    |         |             | 1.45:1  |              |
| Velocity of Propagation |         | 69.5        |         | %            |
| RF Shielding            | 100     |             |         | dB           |
| Group Delay             |         | 1.43 [4.69] |         | ns/ft [ns/m] |
| Capacitance             |         | 29 [95.14]  |         | pF/ft [pF/m] |

### Specifications by Frequency

| Description           | F1  | F2   | F3  | F4  | F5  | Units |
|-----------------------|-----|------|-----|-----|-----|-------|
| Frequency             | 0.5 | 1    | 2.5 | 5   | 11  | GHz   |
| Insertion Loss (Typ.) | 0.8 | 1.12 | 1.6 | 2.4 | 3.6 | dB    |

#### Electrical Specification Notes:

The Insertion Loss data above is based on the performance specifications of the coax cable and connectors used in this assembly.  
The Insertion Loss includes an estimated insertion loss of 0.1 dB per connector.

### Mechanical Specifications

#### Cable Assembly

|          |                     |
|----------|---------------------|
| Length   | 48 in [121.92 cm]   |
| Diameter | 0.79 in [20.07 mm]  |
| Weight   | 0.088 lbs [39.92 g] |

#### Cable

|                                      |                           |
|--------------------------------------|---------------------------|
| Cable Type                           | LC085TBJ                  |
| Impedance                            | 50 Ohms                   |
| Inner Conductor Type                 | Solid                     |
| Inner Conductor Material and Plating | Copper Clad Steel, Silver |
| Dielectric Type                      | PTFE                      |
| Number of Shields                    | 1                         |
| Shield Layer 1                       | Tinned Copper Braid       |
| Jacket Material                      | FEP, Black                |
| Jacket Diameter                      | 0.105 in [2.67 mm]        |
| One Time Minimum Bend Radius         | 0.236 in [5.99 mm]        |
| Repeated Minimum Bend Radius         | 0.787 in [19.99 mm]       |

SMA Male to N Male Cable Assembly using LC085TBJ Coax, 4 FT



## LCCA30605-FT4

### Connectors

| Description                       | Connector 1                | Connector 2   |
|-----------------------------------|----------------------------|---------------|
| Type                              | SMA Male                   | N Male        |
| Impedance                         | 50 Ohms                    | 50 Ohms       |
| Contact Material and Plating      | Brass, Gold                | Brass, Gold   |
| Dielectric Type                   | PTFE                       | PTFE          |
| Body Material and Plating         | Brass, Gold                | Brass, Nickel |
| Coupling Nut Material and Plating | Passivated Stainless Steel | Brass, Nickel |
| Hex Size                          | 5/16 in.                   |               |
| Torque                            | 8 in-lbs 0.9 Nm            |               |

**Compliance Certifications** (see [product page](#) for current document)

### Plotted and Other Data

Notes:

- Values at 25°C, sea level.

SMA Male to N Male Cable Assembly using LC085TBJ Coax, 4 FT



## LCCA30605-FT4

### How to Order

Part Number Configuration:

**LCCA30605**

- **xx**

**uu**

Unit of Measure:  
cm = Centimeters  
<blank> = Inches  
Length  
Base Number

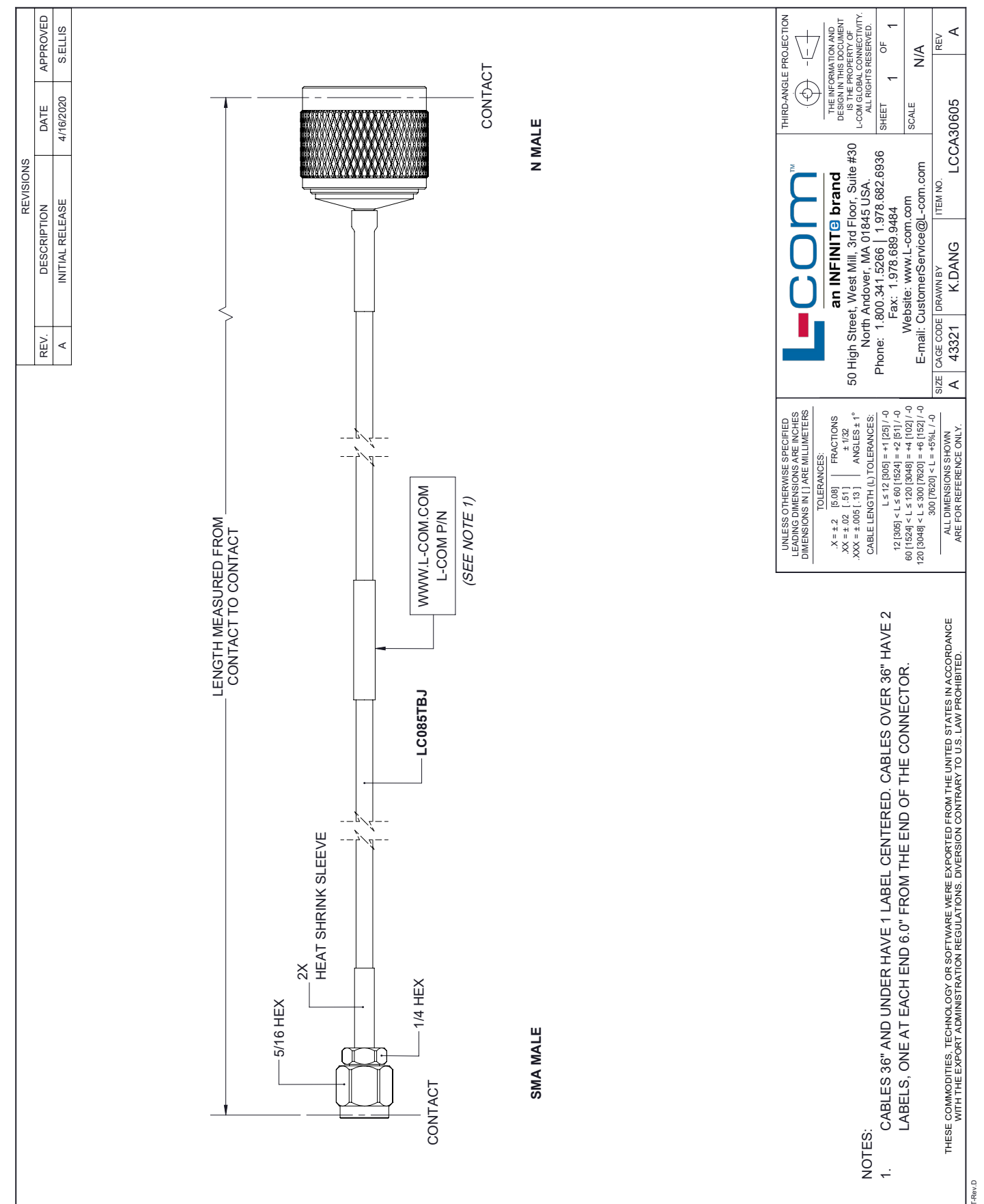
Example: LCCA30605-12 = 12 inches long cable  
LCCA30605-100cm = 100 cm long cable

SMA Male to N Male Cable Assembly using LC085TBJ Coax, 4 FT from L-com has same day shipment for domestic and International orders. L-com is a leading manufacturer of wired and wireless connectivity products and committed to in-stock availability and same day shipping. Our portfolio includes coaxial cable assemblies, connectors, adapters and custom products as well as lightning and surge protectors, NEMA rated enclosures, and an RF product line which includes antennas, amplifiers, passive, and active components.

The information contained within this document is accurate to the best of our knowledge and representative of the part described herein. It may be necessary to make modifications to the part and/or the documentation of the part in order to implement improvements. L-com reserves the right to make such changes as required. Unless otherwise stated, all specifications are nominal. L-com does not make any representation or warranty regarding the suitability of the part described herein for any particular purpose, and L-com does not assume liability arising out of the use of any part or document contained within this document is accurate to the best of our knowledge and representative of the part described herein. It may be necessary to make modifications to the part and/or the documentation of the part in order to implement improvements. L-com reserves the right to make such changes as required. Unless otherwise stated, all specifications are nominal. L-com does not make any representation or warranty regarding the suitability of the part described herein for any particular purpose, and L-com does not assume liability arising out of the use of any part or document.

SMA Male to N Male Cable Assembly using LC085TBJ Coax, 4 FT

L-com CAD Drawing



# Mouser Electronics

Authorized Distributor

Click to View Pricing, Inventory, Delivery & Lifecycle Information:

[infinite Electronics:](#)

[LCCA30605-FT4](#)