

Precision SMA Male Right Angle to TNC Female Bulkhead Semi-Flexible Cable Assembly using LC085TB Coax, 10 FT , LF Solder



## LCCA30561-FT10

### Configuration

- Connector 1: SMA Male Right Angle
- Connector 2: TNC Female Bulkhead
- Cable Type: LC085TB

### Features

- Max Frequency 6 GHz
- Shielding Effectivity > 100dB
- PTFE Dielectric with 69.5% VoP
- Hand Formable
- Tin Filled Copper Composite Braid Outer Conductor

### Applications

- General Purpose
- Laboratory Use
- System Interconnect



### Description

L-com's LCCA30561-FT10 is a precision SMA male right angle to TNC female bulkhead semi-flexible cable assembly using LC085TB coax, 10 FT , LF solder and ships same-day. The LC085TB coax of this SMA cable uses the PTFE dielectric with a VoP of 69.5%. These formable RF cable assemblies are a great alternative to expensive semi-rigid assemblies because they can be hand formed to fit specific designs. Our L-com SMA to TNC cable assembly has a male to female gender configuration with formable LC085TB series coax and operates to 6 GHz. The outer conductor can be easily formed by hand and has an overall diameter of 0.085 inches. L-com's RF cable assembly with TNC bulkhead interface enables system designers to have external connections on their product enclosures or to be used for other rack mount and panel mount applications. This right angle SMA cable interface on the LC085TB coax allows for easier connections in tight spaces.

Custom versions of this SMA male to SMA female cable, along with the rest of L-com's other RF assemblies, can also be built and shipped same day. Other available RF cable assembly value added services from L-com include connector orientation or clocking, heat shrink booting and custom labeling. RF testing can also be performed to document the electrical performance of your cable assembly. Contact a sales representative for testing or custom RF cable quotes. Part number LCCA30561-FT10 L-com Precision SMA Male Right Angle to TNC Female Bulkhead Semi-Flexible Cable Assembly using LC085TB Coax, 10 FT , LF Solder data sheet PDF includes details of the RF product specifications, CAD drawing(s) and dimensions below.

Precision SMA Male Right Angle to TNC Female Bulkhead Semi-Flexible Cable Assembly using LC085TB Coax, 10 FT , LF Solder



## LCCA30561-FT10

### Electrical Specifications

Description	Minimum	Typical	Maximum	Units
Frequency Range	DC		6	GHz
VSWR			1.45:1	
Velocity of Propagation		69.5		%
Capacitance		29 [95.14]		pF/ft [pF/m]

### Specifications by Frequency

Description	F1	F2	F3	F4	F5	Units
Frequency	0.5	1	2.5	6		GHz
Insertion Loss (Typ.)	1.8	2.6	3.8	6.3		dB

#### Electrical Specification Notes:

The Insertion Loss data above is based on the performance specifications of the coax cable and connectors used in this assembly. The Insertion Loss includes an estimated insertion loss of 0.1 dB for the straight connector and 0.2 dB for the right angle connector.

### Mechanical Specifications

#### Cable Assembly

Length	120 in [304.8 cm]
Diameter	0.69 in [17.53 mm]
Weight	0.056 lbs [25.4 g]

#### Cable

Cable Type	LC085TB
Impedance	50 Ohms
Inner Conductor Type	Solid
Inner Conductor Material and Plating	Copper Clad Steel, Silver
Dielectric Type	PTFE
Number of Shields	1
Shield Layer 1	Tinned Copper Braid
Outer Conductor Diameter	0.085 in [2.16 mm]

Precision SMA Male Right Angle to TNC Female Bulkhead Semi-Flexible Cable Assembly using LC085TB Coax, 10 FT , LF Solder



## LCCA30561-FT10

### Connectors

Description	Connector 1	Connector 2
Type	SMA Male Right Angle	TNC Female Bulkhead
Impedance	50 Ohms	50 Ohms
Contact Material and Plating	Brass, Gold	Beryllium Copper, Gold
Dielectric Type	PTFE	PTFE
Body Material and Plating	Brass, Gold	Brass, Nickel
Coupling Nut Material and Plating	Passivated Stainless Steel	
Hex Size	5/16 in.	
Torque	8 in-lbs 0.9 Nm	

**Compliance Certifications** (see [product page](#) for current document)

### Plotted and Other Data

Notes:

- Values at 25°C, sea level.

Precision SMA Male Right Angle to TNC Female Bulkhead Semi-Flexible Cable Assembly using LC085TB Coax, 10 FT , LF Solder



## LCCA30561-FT10

### How to Order

Part Number Configuration:

**LCCA30561**

**- xx**

**uu**

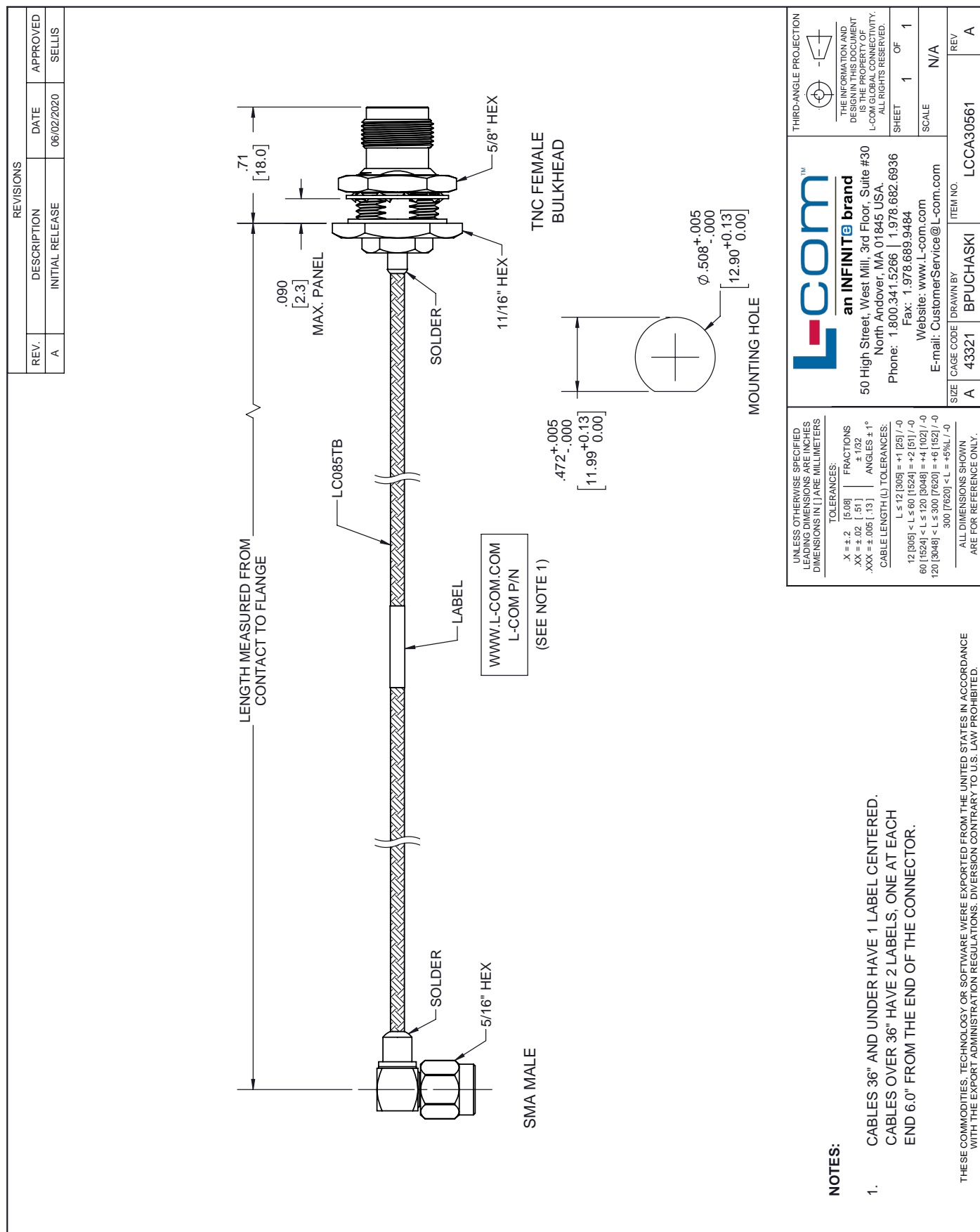
Unit of Measure:  
cm = Centimeters  
<blank> = Inches  
Length  
Base Number

Example: LCCA30561-12 = 12 inches long cable  
LCCA30561-100cm = 100 cm long cable

Precision SMA Male Right Angle to TNC Female Bulkhead Semi-Flexible Cable Assembly using LC085TB Coax, 10 FT , LF Solder from L-com has same day shipment for domestic and International orders. L-com is a leading manufacturer of wired and wireless connectivity products and committed to in-stock availability and same day shipping. Our portfolio includes coaxial cable assemblies, connectors, adapters and custom products as well as lightning and surge protectors, NEMA rated enclosures, and an RF product line which includes antennas, amplifiers, passive, and active components.

The information contained within this document is accurate to the best of our knowledge and representative of the part described herein. It may be necessary to make modifications to the part and/or the documentation of the part in order to implement improvements. L-com reserves the right to make such changes as required. Unless otherwise stated, all specifications are nominal. L-com does not make any representation or warranty regarding the suitability of the part described herein for any particular purpose, and L-com does not assume liability arising out of the use of any part or document contained within this document is accurate to the best of our knowledge and representative of the part described herein. It may be necessary to make modifications to the part and/or the documentation of the part in order to implement improvements. L-com reserves the right to make such changes as required. Unless otherwise stated, all specifications are nominal. L-com does not make any representation or warranty regarding the suitability of the part described herein for any particular purpose, and L-com does not assume liability arising out of the use of any part or document.

## L-com CAD Drawing



# Mouser Electronics

Authorized Distributor

Click to View Pricing, Inventory, Delivery & Lifecycle Information:

[infinite Electronics:](#)

[LCCA31448-FT2](#) [LCCA30561-FT10](#)