

Low Loss MMCX Plug to SMA Male Right Angle Cable Assembly using 100 Series Coax, 1 FT

LCCA30386-FT1



Configuration

- Connector 1: MMCX Plug
- Connector 2: SMA Male Right Angle
- Cable Type: CA-100

Features

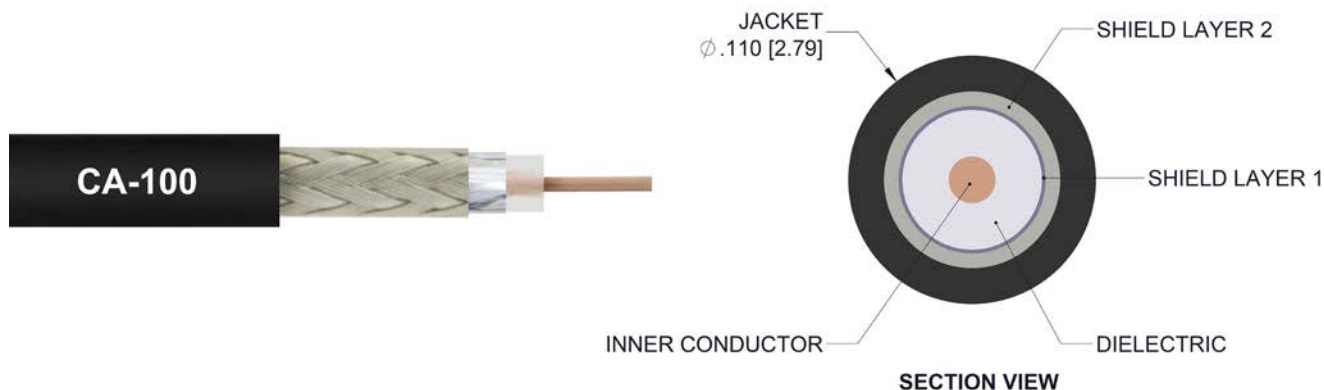
- Max Frequency 5.8 GHz
- LMR-100 Equivalent
- Shielding Effectivity > 90 dB
- 66% Phase Velocity

- Low Insertion Loss
- Double Shielded
- PVC Jacket

Applications

- General Purpose
- Laboratory Use
- Antenna Installations

- Land Mobile Radio & Other Communication Systems
- Cellular & Wi-Fi Systems



Description

L-com's LCCA30386-FT1 is a low loss MMCX plug to SMA male right angle cable assembly using 100 series coax, 1 FT and ships same-day. The CA-100 coax of this MMCX cable uses the PE dielectric with a VoP of 66%, resulting in very low insertion loss compared to solid dielectrics. These flexible RF cable assemblies are ideal for applications where flexure is required. Our L-com MMCX to SMA cable assembly has a plug to male gender configuration with flexible CA-100 series coax and operates to 5.8 GHz. The double shield of this MMCX cable is layered by tinned copper braid over aluminum tape providing shielding effectiveness greater than 90dB. This right angle SMA cable interface on the CA-100 coax allows for easier connections in tight spaces.

Custom versions of this MMCX plug to MMCX male cable, along with the rest of L-com's other RF assemblies, can also be built and shipped same day. Other available RF cable assembly value added services from L-com include connector orientation or clocking, heat shrink booting and custom labeling. RF testing can also be performed to document the electrical performance of your cable assembly. Contact a sales representative for testing or custom RF cable quotes. Part number LCCA30386-FT1 L-com Low Loss MMCX Plug to SMA Male Right Angle Cable Assembly using 100 Series Coax, 1 FT data sheet PDF includes details of the RF product specifications, CAD drawing(s) and dimensions below.

Low Loss MMCX Plug to SMA Male Right Angle Cable
Assembly using 100 Series Coax, 1 FT



LCCA30386-FT1

Electrical Specifications

| Description | Minimum | Typical | Maximum | Units |
|-------------------------------|---------|----------------|---------|-----------------------|
| Frequency Range | DC | | 5.8 | GHz |
| VSWR | | | 1.5:1 | |
| Velocity of Propagation | | 66 | | % |
| RF Shielding | 90 | | | dB |
| Capacitance | | 30.8 [101.05] | | pF/ft [pF/m] |
| DC Resistance Inner Conductor | | 81.07 [265.98] | | Ohms/1000ft [Ohms/Km] |
| DC Resistance Outer Conductor | | 9.51 [31.2] | | Ohms/1000ft [Ohms/Km] |

Specifications by Frequency

| Description | F1 | F2 | F3 | F4 | F5 | Units |
|-----------------------|------|------|------|------|------|-------|
| Frequency | 0.1 | 0.25 | 0.5 | 1 | 2.5 | GHz |
| Insertion Loss (Typ.) | 0.38 | 0.43 | 0.48 | 0.56 | 0.72 | dB |

Electrical Specification Notes:

The Insertion Loss data above is based on the performance specifications of the coax cable and connectors used in the assembly.
The Insertion Loss includes an estimated insertion loss of 0.1 dB for the straight connector and 0.2 dB for the right angle connector.

Mechanical Specifications

Cable Assembly

| | |
|----------|------------------|
| Length | 12 in [304.8 mm] |
| Diameter | 0.315 in [8 mm] |

Cable

| | |
|--------------------------------------|---------------------|
| Cable Type | CA-100 |
| Impedance | 50 Ohms |
| Inner Conductor Type | Solid |
| Inner Conductor Material and Plating | Copper Clad Steel |
| Dielectric Type | PE |
| Number of Shields | 2 |
| Shield Layer 1 | Aluminum Tape |
| Shield Layer 2 | Tinned Copper Braid |
| Jacket Material | PVC, Black |
| Jacket Diameter | 0.11 in [2.79 mm] |
| One Time Minimum Bend Radius | 0.55 in [13.97 mm] |
| Repeated Minimum Bend Radius | 1 in [25.4 mm] |

Low Loss MMCX Plug to SMA Male Right Angle Cable
Assembly using 100 Series Coax, 1 FT



LCCA30386-FT1

Connectors

| Description | Connector 1 | Connector 2 |
|---------------------------------------|----------------|----------------------|
| Type | MMCX Plug | SMA Male Right Angle |
| Specification | BS EN 122340 | MIL-STD-348A |
| Impedance | 50 Ohms | 50 Ohms |
| Contact Material and Plating | Brass, Gold | Brass, Gold |
| Contact Plating Specification | 30 µin minimum | 50 µin minimum |
| Dielectric Type | PTFE | PTFE |
| Outer Conductor Material and Plating | Brass, Gold | |
| Outer Conductor Plating Specification | 3 µin minimum | |
| Body Material and Plating | Brass, Gold | Brass, Nickel |
| Body Plating Specification | 3 µin minimum | 100 µin minimum |
| Coupling Nut Material and Plating | | Brass, Nickel |
| Coupling Nut Plating Specification | | 100 µin minimum |
| Hex Size | | 5/16 inch |
| Torque | | 3 in-lbs 0.34 Nm |

Environmental Specifications

Temperature

Operating Range -20 to +70 deg C

Compliance Certifications (see [product page](#) for current document)

Plotted and Other Data

Notes:

Low Loss MMCX Plug to SMA Male Right Angle Cable
Assembly using 100 Series Coax, 1 FT



LCCA30386-FT1

How to Order

Part Number Configuration:

LCCA30386

- xx

uu

Unit of Measure:
cm = Centimeters
<blank> = Inches
Length
Base Number

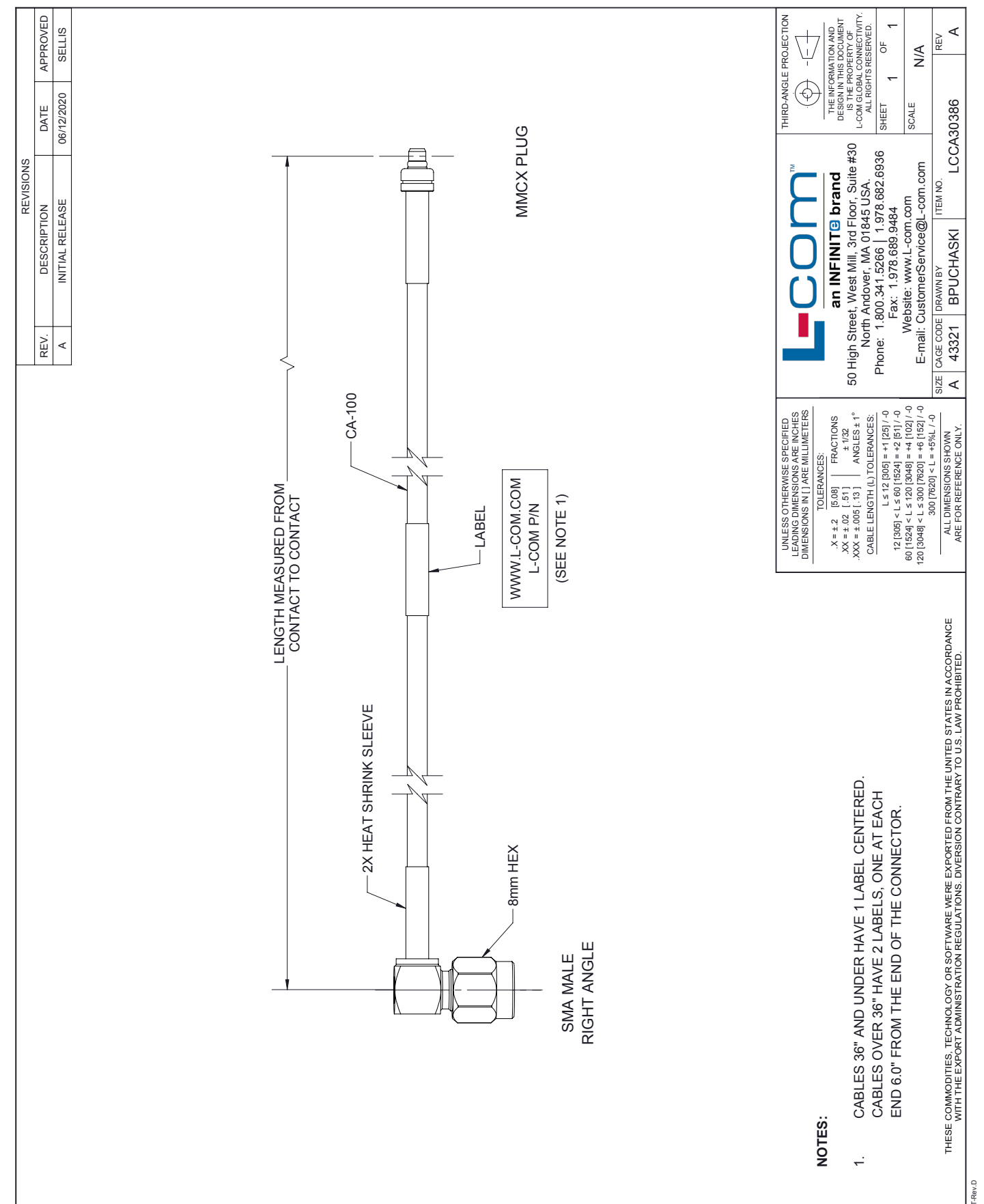
Example: LCCA30386-12 = 12 inches long cable
LCCA30386-100cm = 100 cm long cable

Low Loss MMCX Plug to SMA Male Right Angle Cable Assembly using 100 Series Coax, 1 FT from L-com has same day shipment for domestic and International orders. L-com is a leading manufacturer of wired and wireless connectivity products and committed to in-stock availability and same day shipping. Our portfolio includes coaxial cable assemblies, connectors, adapters and custom products as well as lightning and surge protectors, NEMA rated enclosures, and an RF product line which includes antennas, amplifiers, passive, and active components.

The information contained within this document is accurate to the best of our knowledge and representative of the part described herein. It may be necessary to make modifications to the part and/or the documentation of the part in order to implement improvements. L-com reserves the right to make such changes as required. Unless otherwise stated, all specifications are nominal. L-com does not make any representation or warranty regarding the suitability of the part described herein for any particular purpose, and L-com does not assume liability arising out of the use of any part or document contained within this document is accurate to the best of our knowledge and representative of the part described herein. It may be necessary to make modifications to the part and/or the documentation of the part in order to implement improvements. L-com reserves the right to make such changes as required. Unless otherwise stated, all specifications are nominal. L-com does not make any representation or warranty regarding the suitability of the part described herein for any particular purpose, and L-com does not assume liability arising out of the use of any part or document.

Low Loss MMCX Plug to SMA Male Right Angle Cable Assembly using 100 Series Coax, 1 FT

L-com CAD Drawing



Mouser Electronics

Authorized Distributor

Click to View Pricing, Inventory, Delivery & Lifecycle Information:

[infinite Electronics:](#)

[LCCA30386-FT1](#) [MPM12OM3-FLC-05](#)