

SMA Male to SMA Male Right Angle Cable Assembly using RG223 Coax, 4 FT

LCCA30357-FT4



Configuration

- Connector 1: SMA Male
- Connector 2: SMA Male Right Angle
- Cable Type: RG223

Features

- Max Frequency 12.4 GHz
- 66% Phase Velocity
- Double Shielded
- PVC Jacket

Applications

- General Purpose
- Laboratory Use



Description

L-com's LCCA30357-FT4 is a SMA male to SMA male right angle cable assembly using RG223 coax, 4 FT and ships same-day. The RG223 coax of this SMA cable uses the PE dielectric with a VoP of 66%. These flexible RF cable assemblies are ideal for applications where flexure is required. Our L-com SMA to SMA cable assembly has a male to male gender configuration with flexible RG223 series coax and operates to 12.4 GHz. The double shield of this SMA cable is layered by silver plated copper braid over silver plated copper braid. This right angle SMA cable interface on the RG223 coax allows for easier connections in tight spaces.

Custom versions of this SMA male to SMA male cable, along with the rest of L-com's other RF assemblies, can also be built and shipped same day. Other available RF cable assembly value added services from L-com include connector orientation or clocking, heat shrink booting and custom labeling. RF testing can also be performed to document the electrical performance of your cable assembly. Contact a sales representative for testing or custom RF cable quotes. Part number LCCA30357-FT4 L-com SMA Male to SMA Male Right Angle Cable Assembly using RG223 Coax, 4 FT data sheet PDF includes details of the RF product specifications, CAD drawing(s) and dimensions below.

SMA Male to SMA Male Right Angle Cable Assembly using RG223 Coax, 4 FT



LCCA30357-FT4

Electrical Specifications

| Description | Minimum | Typical | Maximum | Units |
|-------------------------|---------|---------------|---------|--------------|
| Frequency Range | DC | | 12.4 | GHz |
| VSWR | | | 1.5:1 | |
| Velocity of Propagation | | 66 | | % |
| Capacitance | | 30.8 [101.05] | | pF/ft [pF/m] |
| Operating Voltage (AC) | | | 500 | Vrms |

Specifications by Frequency

| Description | F1 | F2 | F3 | F4 | F5 | Units |
|-----------------------|-----|------|-----|------|-----|-------|
| Frequency | 0.5 | 1 | 2.5 | 5 | 11 | GHz |
| Insertion Loss (Typ.) | 0.7 | 0.86 | 1.1 | 1.66 | 2.5 | dB |

Electrical Specification Notes:

The Insertion Loss data above is based on the performance specifications of the coax cable and connectors used in the assembly.
The Insertion Loss includes an estimated insertion loss of 0.1 dB for the straight connector and 0.2 dB for the right angle connector.

Mechanical Specifications

Cable Assembly

| | |
|----------|---------------------|
| Length | 48 in [121.92 cm] |
| Diameter | 0.315 in [8 mm] |
| Weight | 0.066 lbs [29.94 g] |

Cable

| | |
|--------------------------------------|----------------------------|
| Cable Type | RG223 |
| Impedance | 50 Ohms |
| Inner Conductor Type | Solid |
| Inner Conductor Material and Plating | Copper, Silver |
| Dielectric Type | PE |
| Number of Shields | 2 |
| Shield Layer 1 | Silver Plated Copper Braid |
| Shield Layer 2 | Silver Plated Copper Braid |
| Jacket Material | PVC, Black |
| Jacket Diameter | 0.21 in [5.33 mm] |

| | |
|------------------------------|---------------------|
| One Time Minimum Bend Radius | 0.984 in [24.99 mm] |
|------------------------------|---------------------|

SMA Male to SMA Male Right Angle Cable Assembly using RG223 Coax, 4 FT



LCCA30357-FT4

Connectors

| Description | Connector 1 | Connector 2 |
|-------------------------------|------------------|----------------------|
| Type | SMA Male | SMA Male Right Angle |
| Specification | MIL-STD-348A | MIL-STD-348A |
| Impedance | 50 Ohms | 50 Ohms |
| Contact Material and Plating | Brass, Gold | Brass, Gold |
| Contact Plating Specification | 50µ in. minimum | 50µ in. minimum |
| Dielectric Type | Teflon | Teflon |
| Body Material and Plating | Brass, Nickel | Brass, Nickel |
| Body Plating Specification | 100µ in. minimum | 100µ in. minimum |
| Hex Size | 5/16 in | 5/16 in |
| Torque | 5 in-lbs 0.57 Nm | 5 in-lbs 0.57 Nm |

Compliance Certifications (see [product page](#) for current document)

Plotted and Other Data

Notes:

SMA Male to SMA Male Right Angle Cable Assembly using RG223 Coax, 4 FT



LCCA30357-FT4

How to Order

Part Number Configuration:

LCCA30357

- **xx**

uu

Unit of Measure:
cm = Centimeters
<blank> = Inches
Length
Base Number

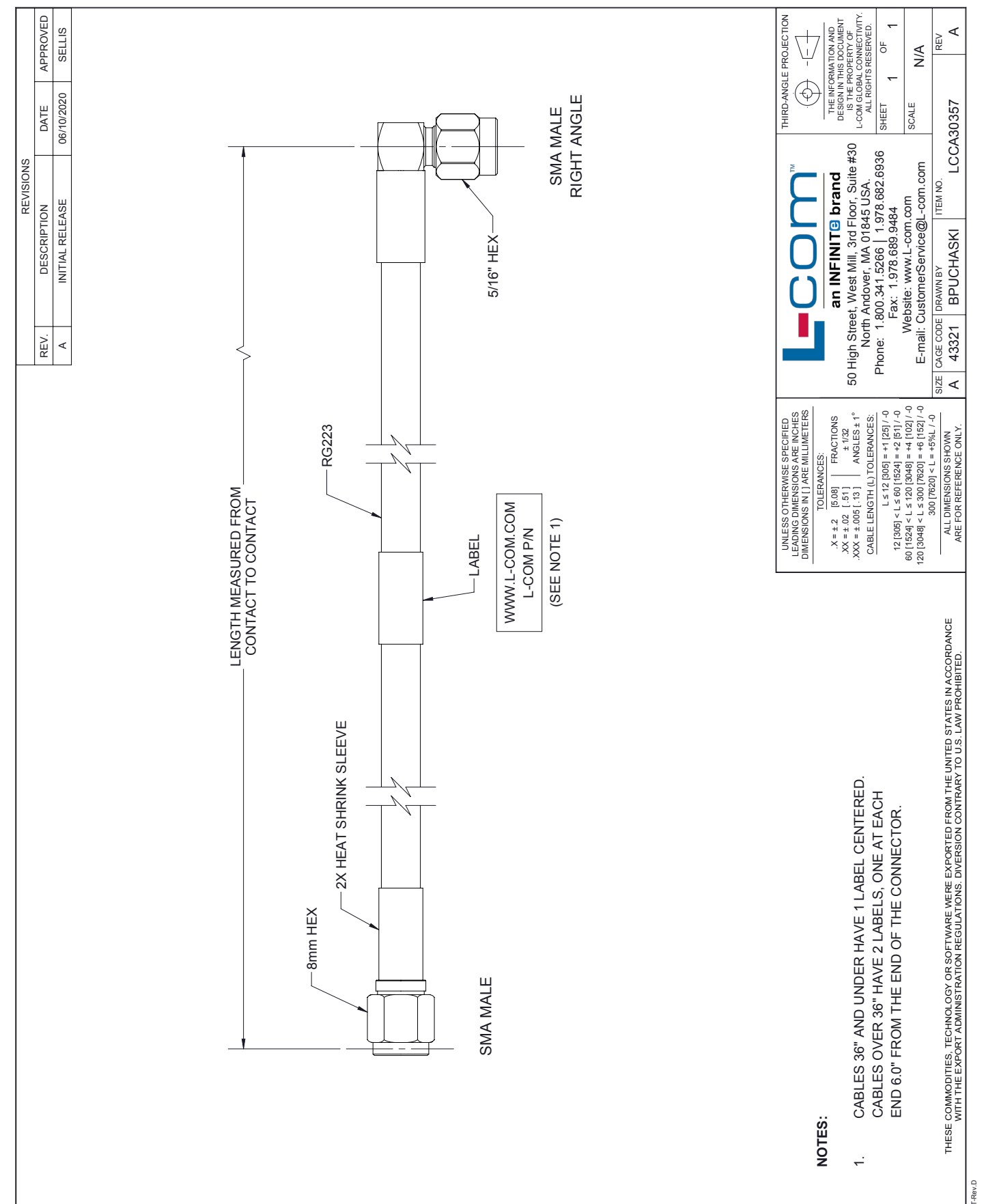
Example: LCCA30357-12 = 12 inches long cable
LCCA30357-100cm = 100 cm long cable

SMA Male to SMA Male Right Angle Cable Assembly using RG223 Coax, 4 FT from L-com has same day shipment for domestic and International orders. L-com is a leading manufacturer of wired and wireless connectivity products and committed to in-stock availability and same day shipping. Our portfolio includes coaxial cable assemblies, connectors, adapters and custom products as well as lightning and surge protectors, NEMA rated enclosures, and an RF product line which includes antennas, amplifiers, passive, and active components.

The information contained within this document is accurate to the best of our knowledge and representative of the part described herein. It may be necessary to make modifications to the part and/or the documentation of the part in order to implement improvements. L-com reserves the right to make such changes as required. Unless otherwise stated, all specifications are nominal. L-com does not make any representation or warranty regarding the suitability of the part described herein for any particular purpose, and L-com does not assume liability arising out of the use of any part or document contained within this document is accurate to the best of our knowledge and representative of the part described herein. It may be necessary to make modifications to the part and/or the documentation of the part in order to implement improvements. L-com reserves the right to make such changes as required. Unless otherwise stated, all specifications are nominal. L-com does not make any representation or warranty regarding the suitability of the part described herein for any particular purpose, and L-com does not assume liability arising out of the use of any part or document.

SMA Male to SMA Male Right Angle Cable Assembly using RG223 Coax, 4 FT

L-com CAD Drawing



Mouser Electronics

Authorized Distributor

Click to View Pricing, Inventory, Delivery & Lifecycle Information:

[infinite Electronics:](#)

[LCCA30357-FT4](#) [LCCA31479-FT1.5](#)